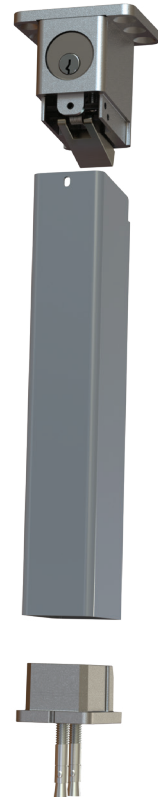


9300 Mullion

The PDQ 9300 Series removable mullions are designed for use with the 6300/6400 Series Rim Exit Devices on pairs of doors. They are designed for quick removal from the top bracket by simple operation of the rim cylinder when a clear, unobstructed large opening is required. Once the mullion is removed, carts, gurneys, large machinery and the like can freely pass through the opening. When the mullion is re-installed, the unit will self lock in place without a key.

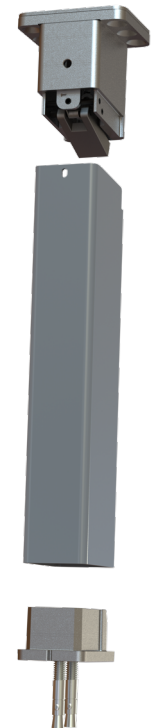
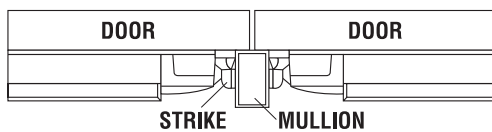
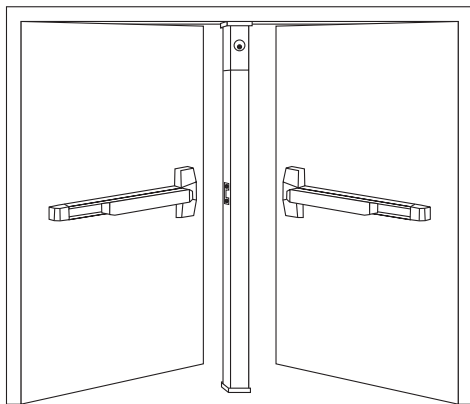
Specifications

Mullion Head/Foot brackets:	• Cast Stainless Steel
Tube Dimensions:	• Powder Coated 2" x 3" Steel - 3/16" Wall
Strike:	• 639080 Strike included for Fire Labeled • Strike not included for panic mullion. Use supplied strike with exit device.
Size:	• 8' or 10' lengths - Can easily be cut to shorter size in field
Finish:	• Powder Coated 689 (Aluminum) - can be painted
Electrified Options:	• Wire routing w/ plugs
Warranty:	• One (1) year limited warranty
Certifications: Compliances: Listings:	• Fire model is 3 hour fire labeled for pairs up to and including 8' x 8' (With 6300RF/6400RF Rim Device) • Meets requirements of the BAA as a COTS product manufactured in the United States



Key Removable

Orientation



Non-Keyed Removable

How to order

DEVICE TYPE	FOR DOOR HEIGHT	REMOVABLE TYPE	RATING	OPTIONS	KEYING
93	0	0	–	–	
93 - Mullion	0 - 8' and under Door 1 - 10' and under Door	0 - Key Removable 1 - Non-Keyed Removable	Blank - Non Fire Rated F - Fire Rated (8' Max)	EM - Electrified Mullion	See Below

Key Removable Only

CYLINDER TYPE	KEYWAY	KEYING
D	SCC	KD
D Default L Less Cylinder SF6 Lock is SFIC prepped w/ 6 pin core SF7 Lock is SFIC prepped w/ 7 pin core SFL Lock is SFIC prepped but less core SFC Lock is SFIC prepped w/ construction core SFP Lock is SFIC prepped w/ plastic construction core LF6 Lock is Schlage LFIC prepped w/ Schlage core LFL Lock is Schlage LFIC prepped but less core LFC Lock is Schlage LFIC prepped w/ construction core	SCC – Schlage C OTHERS AVAILABLE	KD – Keyed Different KA – Keyed Like KO - Zero Bitted MK – Master Keyed CMK – Construction Keyed GMK – Grand Master Keyed

639081 - Mullion Storage Kit

Kit includes items necessary to mount/store mullion on the wall when not in use





SECURING CONFIDENCE OPENING POSSIBILITIES

Phone: 800.441.9692

Tech Support: 833.273.7832

Email: help@pdqlocks.com

Headquarters: 2230 Embassy Drive, Lancaster, PA 17603
P.O. Box 6426, Lancaster, PA 17607

Regional Distribution Centers: Lancaster, PA | Norcross,
GA | Kansas City, MO | Auburn, WA