



85003 - Electric Strike Installation Instruction

Operating Voltage 12VDC, 24VDC, 12/24VDC

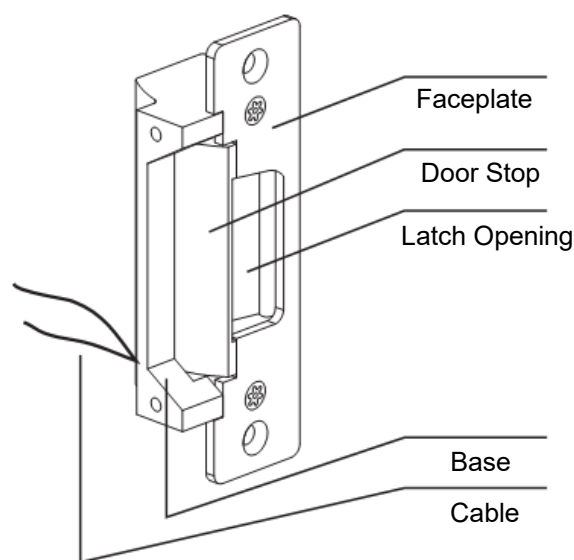
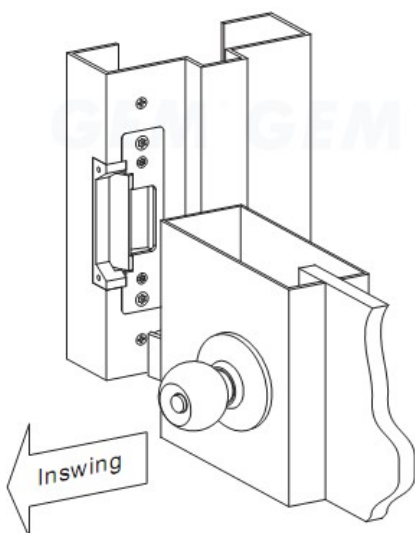
Voltage Tolerance $\pm 15\%$

Current Draw $0.25A/12VDC$
 $0.15A/24VDC$

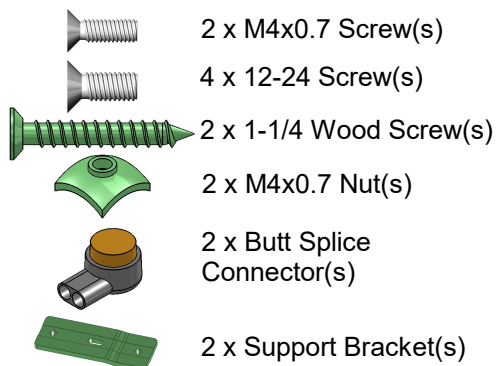
Operating Temperature 14 – 110 degrees F

Humidity 0-95%

For PDQ GR1 Mortise Locks –
Without deadbolt only

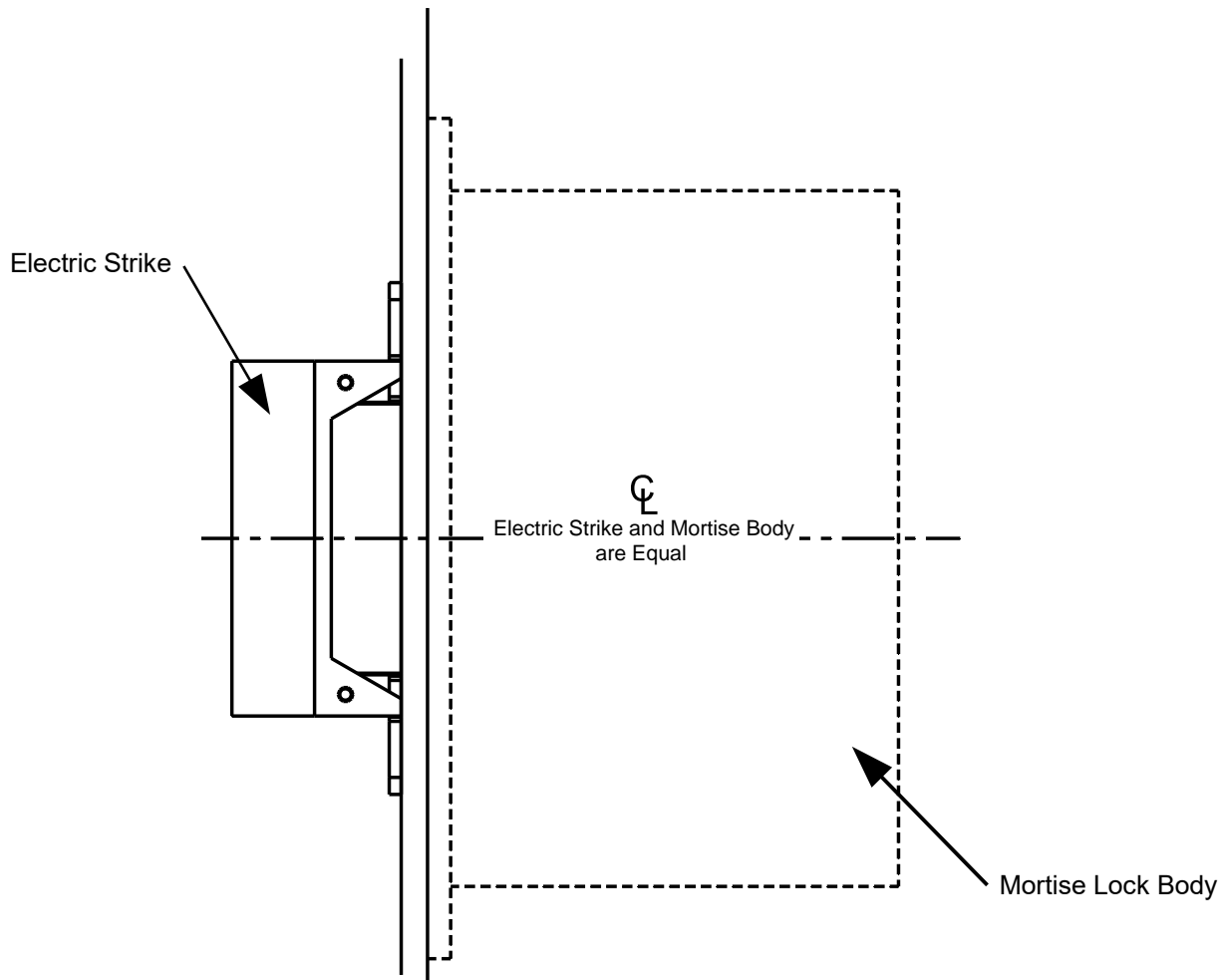


Included Hardware



Installation Instructions

1. Verify that the strike is in the proper mode of operation (Fail Secure/ Fail Safe). *Refer to page 3*
2. Prepare frame using the appropriate template for your frame type. *Refer to page 2*
3. Connect the strike to power source. *Refer to page 3*
4. Install the strike unit in jamb cutout using the hardware provided. *Refer to page 2*

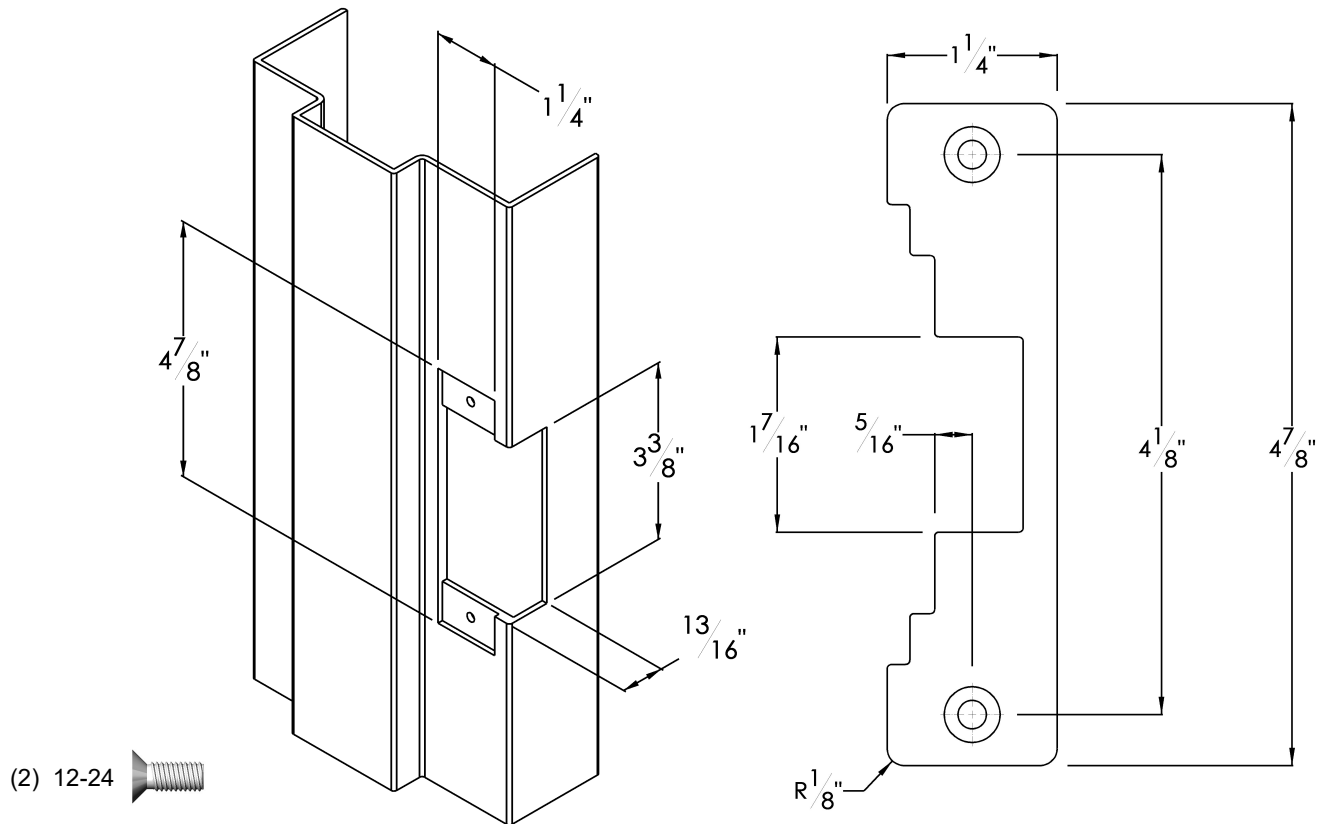


NOTE:

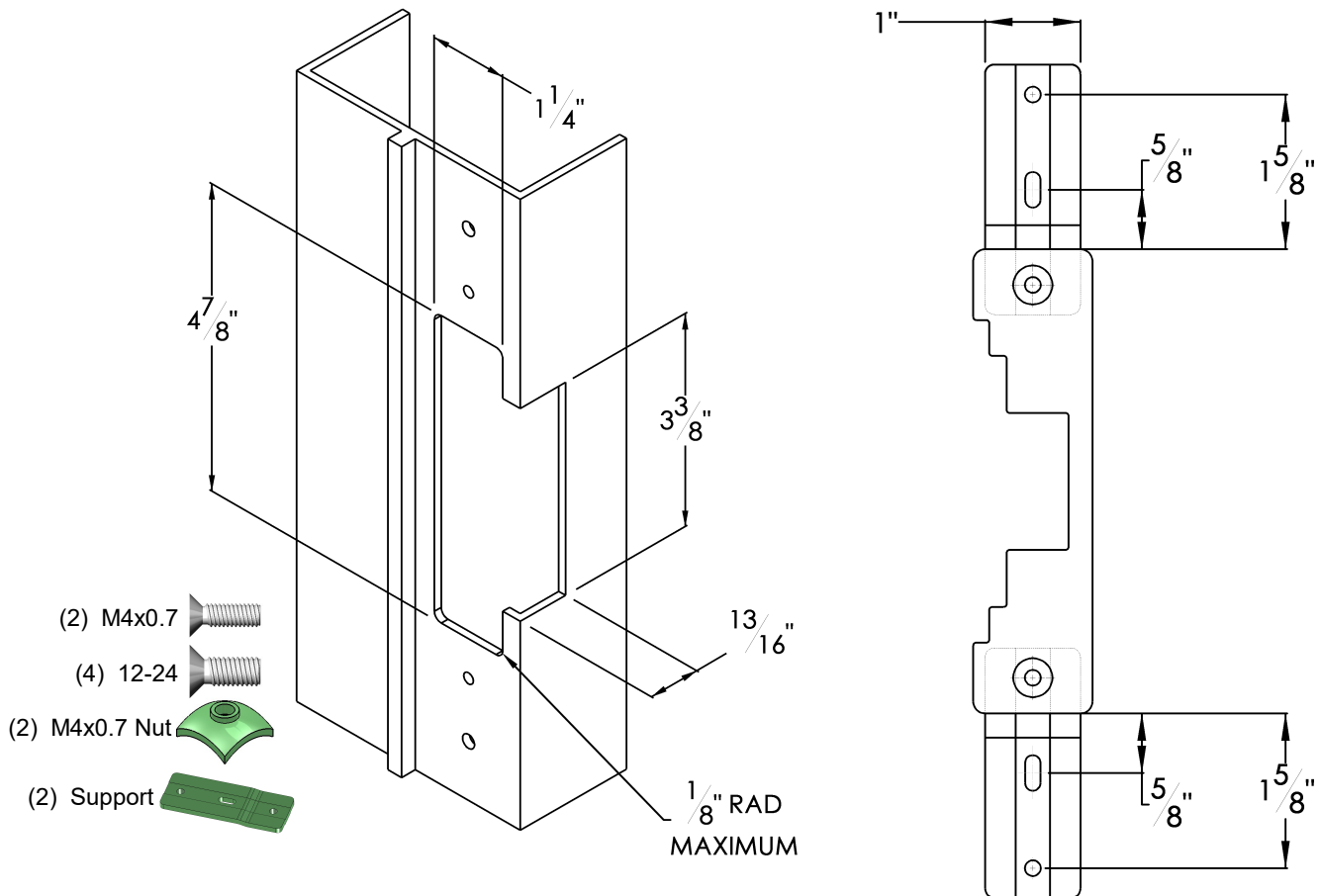
Strike Prep must be located vertically on centerline of latch.
This is not the standard ANSI strike prep.

ANSI Metal Jamb Installations

3

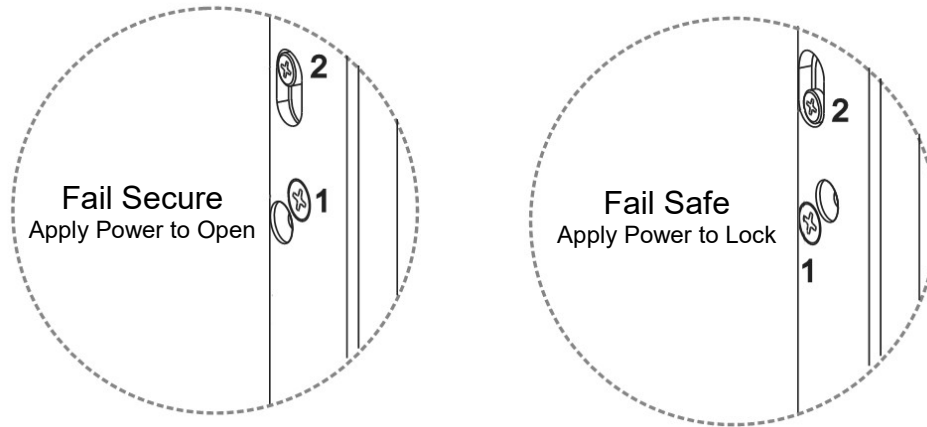


Aluminum Jamb Installations



Changing Fail-Safe / Fail-Secure

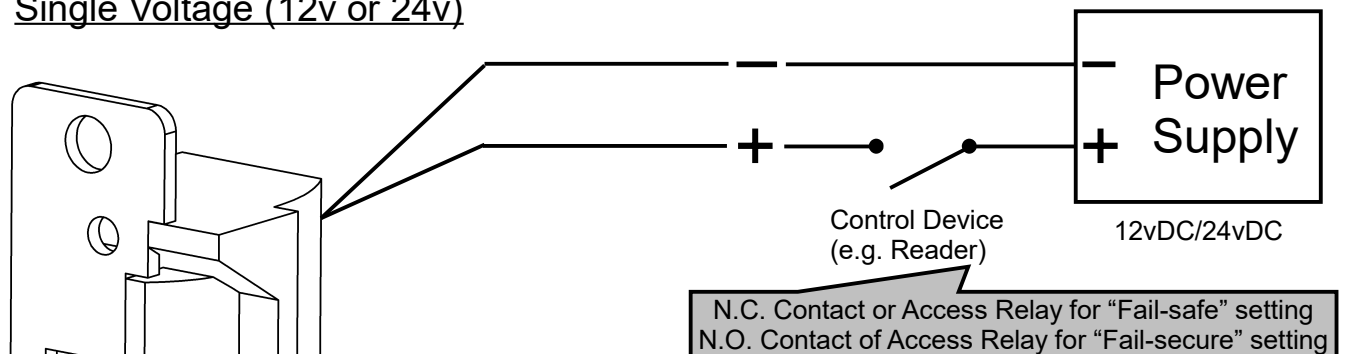
4



Strike is shipped from factory in fail-secure configuration. If fail-safe configuration is desired, remove screw from hole #1 as shown in above diagram and loosen screw #2. Slide screw #2 to opposite end of the slot and tighten. Install screw #1 into hole labeled fail safe.

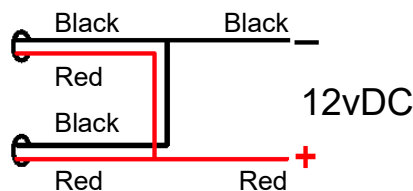
Wiring Diagram

Single Voltage (12v or 24v)



Dual Voltage (12v or 24v)

Connect wires in **Parallel** for the 12vDC operation.



Connect wires in **Series** for the 24vDC operation.

