

## 1. Adjust the Latch Backset Length

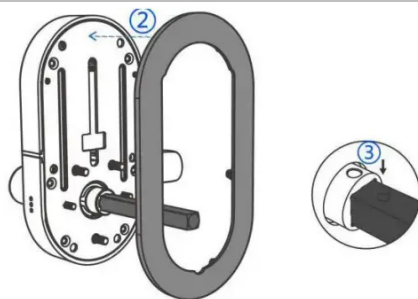
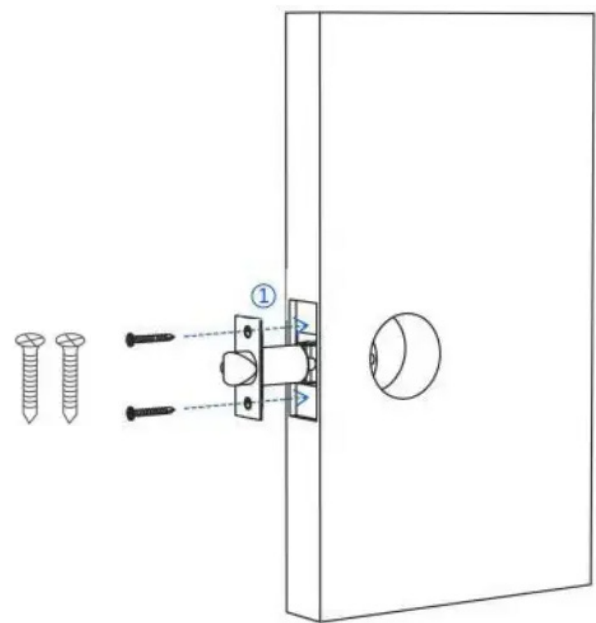
- Measure your door backset.
- Adjust the backset to the corresponding latch length.

2-3/8"(60mm)

2-3/4"(70mm)

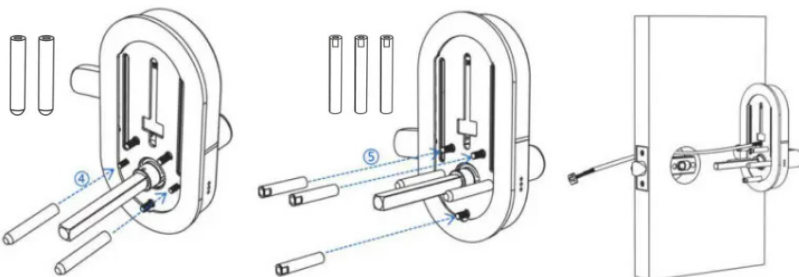
## 2. Install the Latch Bolt

- Install the latchbolt into the door with 2 #8x3/4" sheet metal screws and tighten it. (Refer to 1)



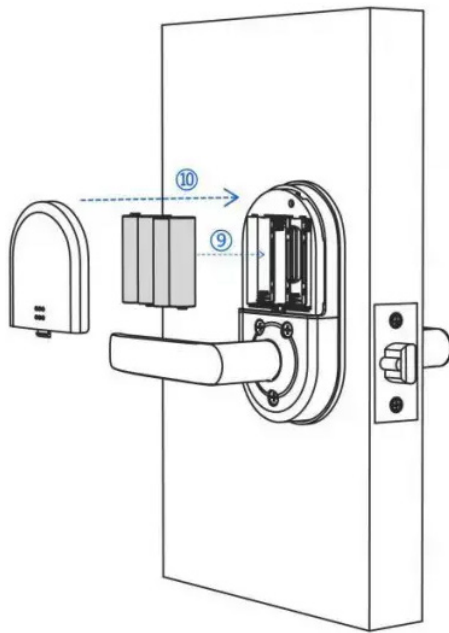
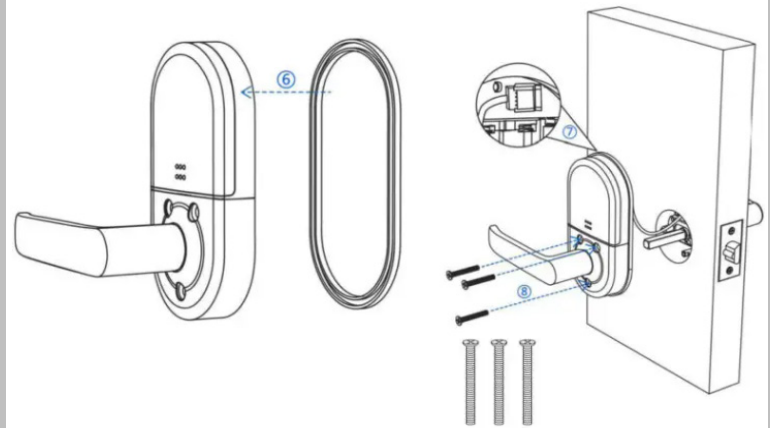
## 3. Install the Exterior Assembly

- Install the waterproof gasket to exterior assembly. (Refer to 2)
- Install the square shaft into the spindle hub. The pin should be in the vertical position. (Refer to 3)
- Install the 2 silver positioning pins. (Refer to 4)
- Install the exterior assembly with the 3 brass threaded inserts. (Refer to 5) (The 3 longer brass inserts are for wider doors)
- Pass the cable above the latchboth assembly and install the exterior assembly.



## 4. Install the Interior Assembly

- Install the waterproof gasket. (Refer to 6)
- Connect the cable to the top of the assembly. (Refer to 7)
- Neatly route the wire inside the escutcheon.
- Secure the exterior assembly with 3 M5x65 flat head machine screws. (Refer to 8) (The 3 longer M5x65 flat head machine screws are for wider doors)



## 5. Install the Batteries

- Insert 4 AA alkaline batteries. (Refer to 9)
- Install the battery cover. (Refer to 10)

**The Installation is Complete.**



Installation Video



Programming Video