

4200R - PANIC & 4200RF - FIRE LABELED RIM EXIT DEVICE MODELS FOR 2-1/4" BACKSET FROM STOP

TEMPLATE: 429308,
REV. 0 5-7-12

4200 SERIES EXIT DEVICES WITH 429004 STRIKE

TABLE "A" CHASSIS TO DOOR (IF APPLICABLE)	TABLE "B" STRIKE TO FRAME/END BRACKET TO DOOR
MACHINE SCREWS: USE #7 OR 13/64" [5.1] DRILL AND 1/4-20 TAP	MACHINE SCREWS: USE #16 OR 11/64" [4.4] DRILL AND 12-24 TAP
WOOD DOOR/FRAME SCREWS: USE 5/32" [4.0] DRILL	WOOD DOOR/FRAME SCREWS: USE 1/8" [3.2] DRILL
SEX NUTS: USE 3/8" [9.5] DRILL	SEX NUTS: USE 3/8" [9.5] DRILL

THIS SIDE UP FOR LHR DOOR

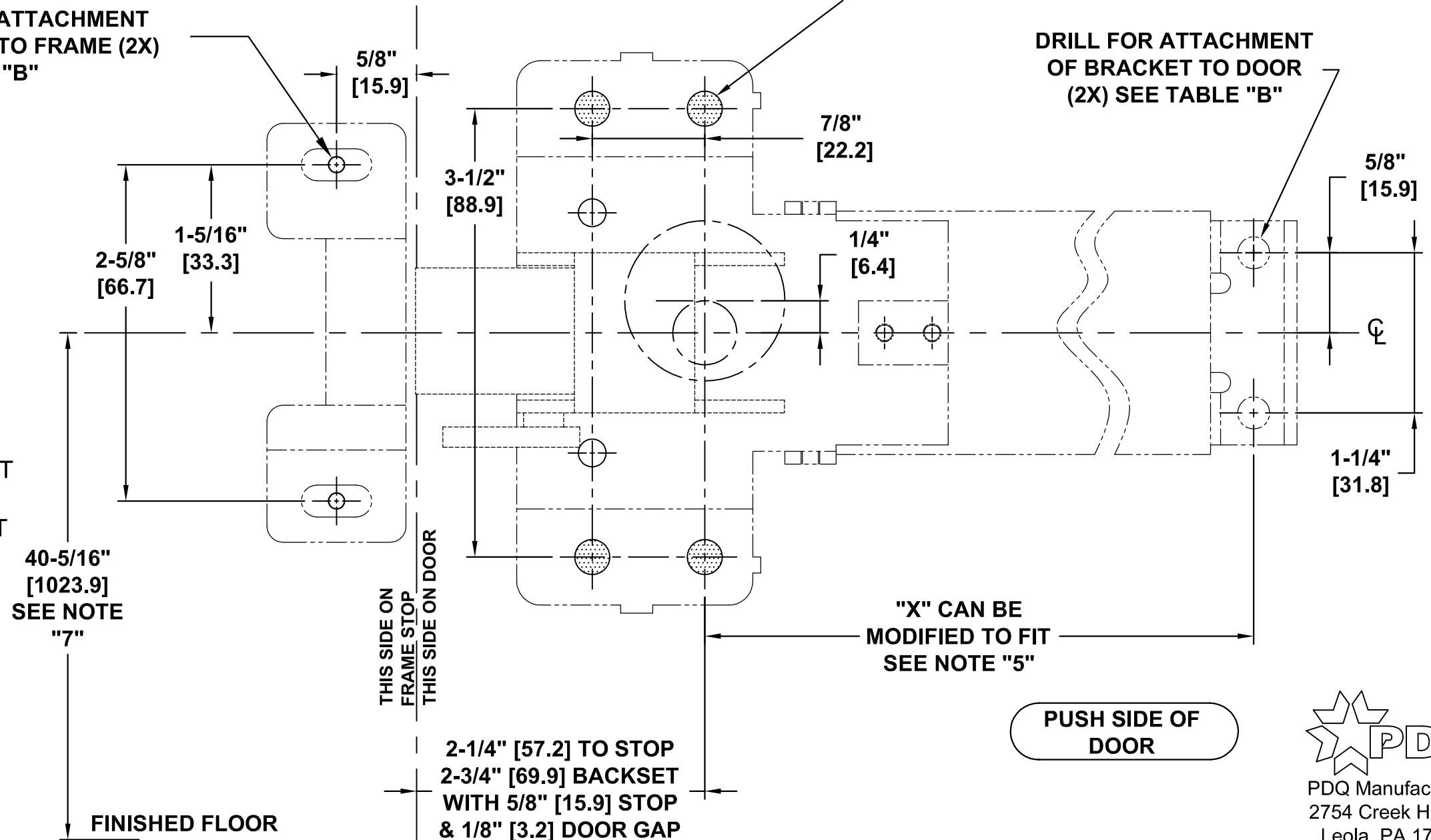
NOTES:

1. VERIFY PRINTED TO SCALE.
2. DIMENSIONS IN **INCHES** [MM].
3. CAUTION: SEX NUTS MAY BE REQUIRED FOR UNREINFORCED DOORS OR COMPOSITE FIRE DOORS. CONSULT DOOR MANUFACTURER'S RECOMMENDATIONS.
4. SEE TRIM TEMPLATE (IF APPLICABLE) FOR RELATED MACHINING DETAILS.
5. DIMENSION "X" MEASURES 31-5/16" [795.3] UNCUT FOR 36" [914.4] DOORS. DIMENSION "X" MEASURES 43-5/16" [1100] UNCUT FOR 48" [1219.2] DOORS.
6. SEX NUTS CONFLICT WITH SECTIONAL TRIM (PULL SIDE OF DOOR). IN CASES WHERE THROUGH BOLTING IS REQUIRED, USE ESCUTCHEON TRIM.
7. RECOMMENDED DIMENSION FROM FINISHED FLOOR MAY VARY BY APPLICATION, CODES OR BUILDING SPECIFICATIONS.
8. ALWAYS CHECK PDQ WEBSITE FOR MOST RECENT REVISION AT WWW.PDQLOCKS.COM

DRILL FOR ATTACHMENT OF STRIKE TO FRAME (2X) SEE TABLE "B"

DRILL FOR ATTACHMENT OF DEVICE CHASSIS TO DOOR (4X) IF APPLICABLE. REQUIRED FOR SECTIONAL TRIM, EXIT ONLY OR CYLINDER ONLY. SEE NOTES "5" AND "6"

DRILL FOR ATTACHMENT OF BRACKET TO DOOR (2X) SEE TABLE "B"



"X" CAN BE MODIFIED TO FIT SEE NOTE "5"

PUSH SIDE OF DOOR

THIS SIDE UP FOR RHR DOOR