

4200R/RF & 4200V/VF RIM & SRV MODELS ON DOUBLE DOORS (PAIRS)

FOR 4200 SERIES EXIT DEVICES WITH OPTIONAL 429019 DOUBLE DOOR STRIKE

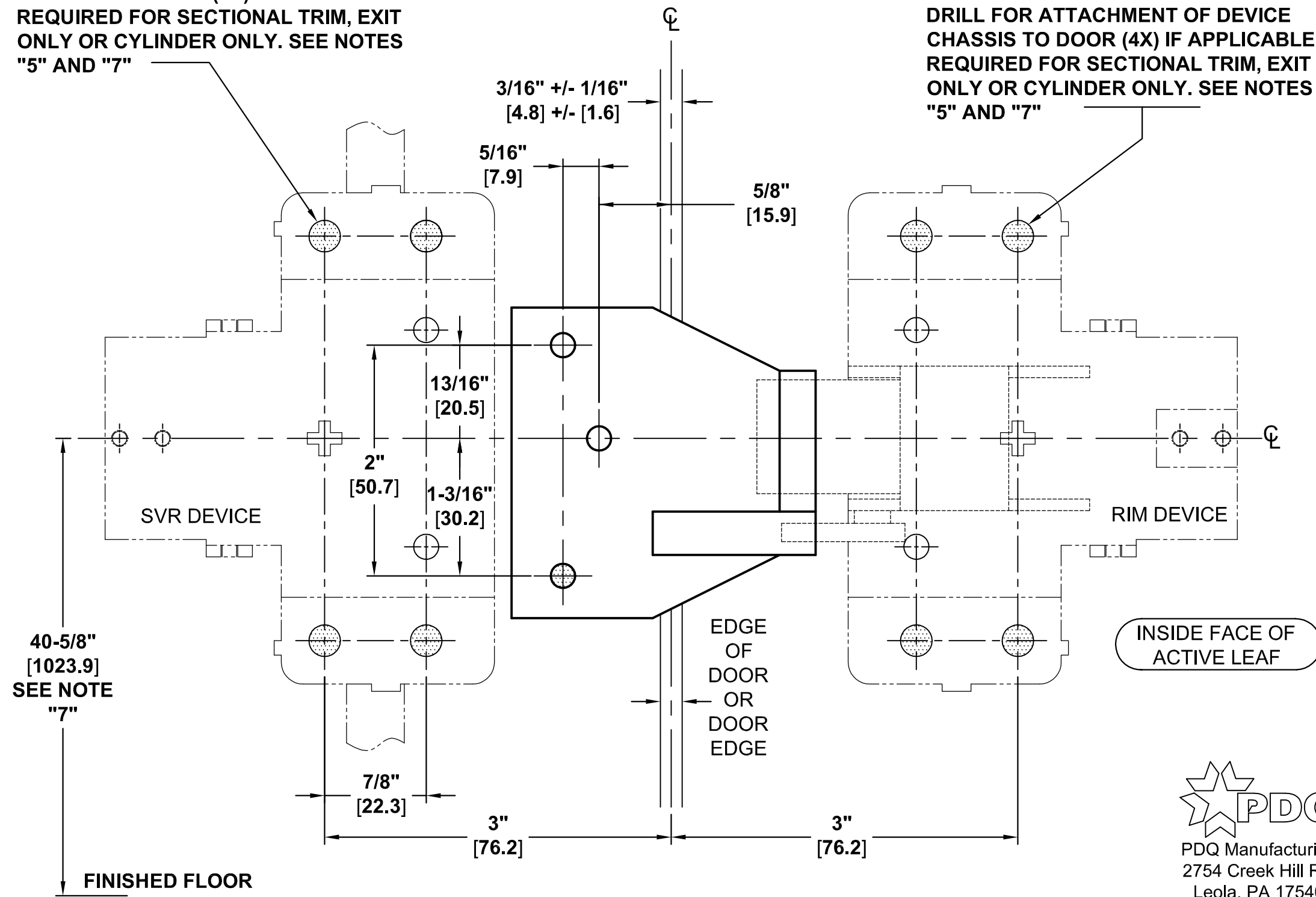
TEMPLATE: 429309,
REV. 0 3-20-12

MACHINE SCREWS: USE #7 OR 13/64" [5.1] DRILL AND 1/4-20 TAP
WOOD DOOR/FRAME SCREWS: USE 5/32" [4.0] DRILL
SEX NUTS: USE 3/8" [9.5] DRILL

- NOTES:
1. VERIFY PRINTED TO SCALE.
 2. SEE EXIT DEVICE TEMPLATE FOR BACKSET DIMENSIONS AND REFERENCE POINTS.
 3. DIMENSIONS IN **INCHES** [MM].
 4. CAUTION: SEX NUTS MAY BE REQUIRED FOR UNREINFORCED DOORS OR COMPOSITE FIRE DOORS. CONSULT DOOR MANUFACTURER'S RECOMMENDATIONS.
 5. SEE TRIM TEMPLATE (IF APPLICABLE) OR DEVICE TEMPLATE FOR RELATED MACHINING DETAILS.
 6. SEX NUTS CONFLICT WITH SECTIONAL TRIM (PULL SIDE OF DOOR). IN CASES WHERE THROUGH BOLTING IS REQUIRED, USE ESCUTCHEON TRIM.
 7. RECOMMENDED DIMENSION FROM FINISHED FLOOR MAY VARY BY APPLICATION, CODES OR BUILDING SPECIFICATIONS.
 8. USE COORDINATOR FOR SEQUENTIAL CLOSING.
 9. LHR ACTIVE SHOWN. REVERSE IMAGE FOR RHR ACTIVE.
 10. ALWAYS CHECK PDQ WEBSITE FOR MOST RECENT REVISION AT WWW.PDQLOCKS.COM

DRILL FOR ATTACHMENT OF DEVICE CHASSIS TO DOOR (4X) IF APPLICABLE. REQUIRED FOR SECTIONAL TRIM, EXIT ONLY OR CYLINDER ONLY. SEE NOTES "5" AND "7"

DRILL FOR ATTACHMENT OF DEVICE CHASSIS TO DOOR (4X) IF APPLICABLE. REQUIRED FOR SECTIONAL TRIM, EXIT ONLY OR CYLINDER ONLY. SEE NOTES "5" AND "7"



THIS SIDE UP FOR LHR DOOR

THIS SIDE UP FOR RHR DOOR

PDQ
 PDQ Manufacturing
 2754 Creek Hill Rd.
 Leola, PA 17540
 800-441-9692
 Fax: 717-656-6892
www.pdqlocks.com