

6300V - PANIC & 6300VF - FIRE LABELED SURFACE VERTICAL ROD EXIT DEVICES

TEMPLATE: 639302

REV. 4 12-27-22

6300 SERIES EXIT DEVICES USING SNB OR SURFACE MOUNT FASTENERS

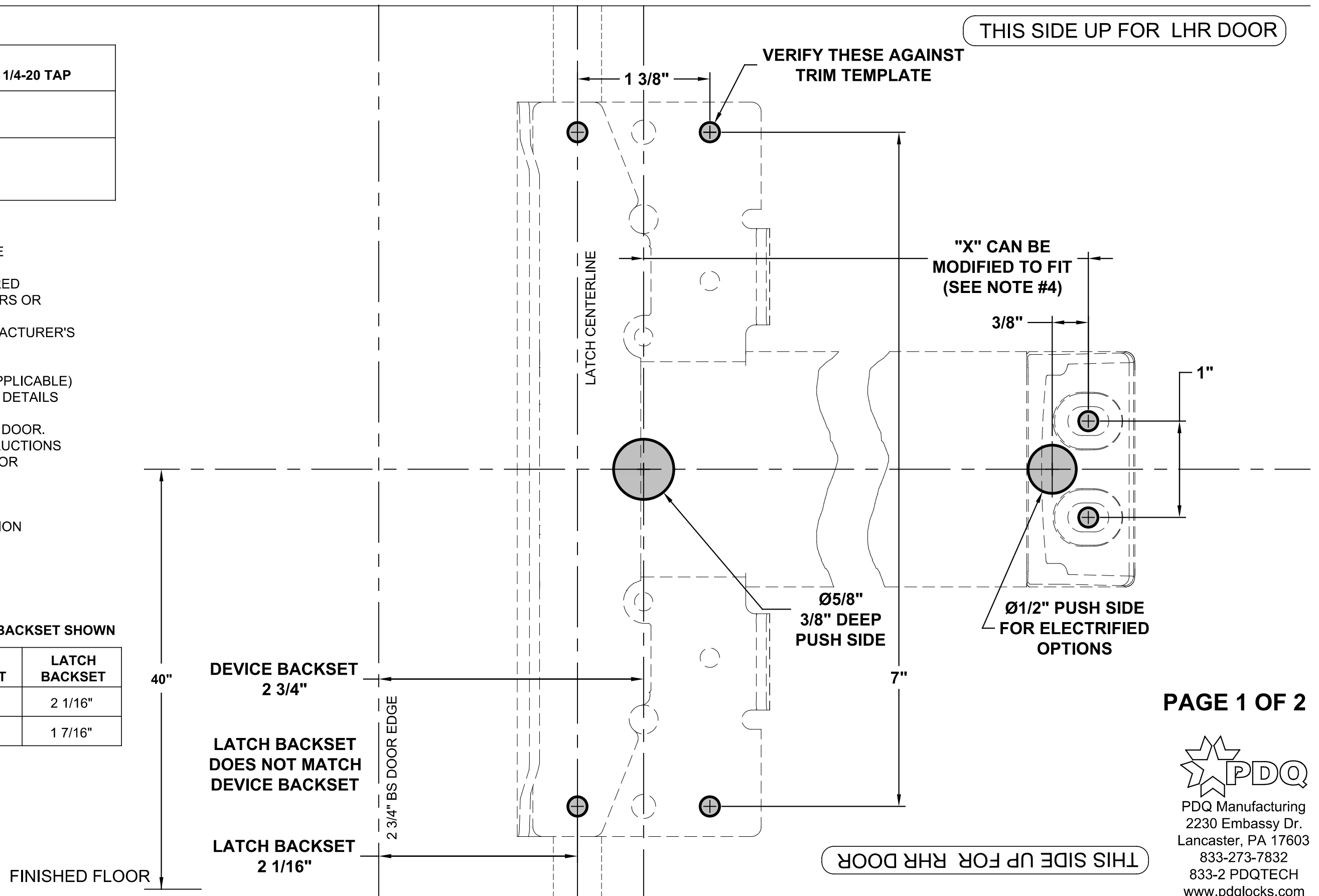
DEVICE
MACHINE SCREWS: USE #7 OR 13/64" DRILL AND 1/4-20 TAP
WOOD SCREWS: USE 5/32" DRILL
SEX NUTS: USE 3/8" DRILL PULL SIDE USE 9/32" DRILL PUSH SIDE

NOTES:

1. VERIFY PRINTED TO SCALE
2. SEX NUTS MAY BE REQUIRED FOR UNREINFORCED DOORS OR COMPOSITE FIRE DOORS. CONSULT DOOR MANUFACTURER'S RECOMMENDATIONS
3. SEE TRIM TEMPLATE (IF APPLICABLE) FOR RELATED MACHINING DETAILS
4. DIMENSION "X" SIZED FOR DOOR. REFER TO DEVICE INSTRUCTIONS WHEN CUTTING DOWN FOR NARROWER OPENING
5. CHECK PDQ WEBSITE FOR MOST RECENT REVISION WWW.PDQLOCKS.COM

WOOD/STEEL DOOR 2-3/4" BACKSET SHOWN

MINIMUM STILE WIDTH	DEVICE BACKSET	LATCH BACKSET
4 1/4"	2 3/4"	2 1/16"
3 1/2"	2 1/8"	1 7/16"



TOP STRIKE

MACHINE SCREWS:
USE #25 OR 5/32" DRILL
AND #10-24 TAP

**FOLD HERE, PLACE
AGAINST DOOR & STOP**

7/16"

1 3/8"

**DRILL AND TAP
AFTER STRIKE
ADJUSTMENT**

TOP/BOTTOM LATCH TO DOOR

MACHINE SCREWS:
USE #7 OR 13/64" DRILL AND 1/4-20 TAP

WOOD SCREWS:
USE 5/32" DRILL

SEX NUTS:
USE 3/8" DRILL PULL SIDE
USE 9/32" DRILL PUSH SIDE

1 5/16"

**DRILL AND TAP
TOP LATCH TO DOOR**

1 3/4"

TOP LATCH

2 3/4" BS DOOR EDGE - LHR

2 3/4" BS DOOR EDGE - RHR

DEVICE BACKSET	LATCH BACKSET
2 3/4"	2 1/16"
2 1/8"	1 7/16"

2 1/16"
**LATCH BACKSET
DOES NOT MATCH
DEVICE**

2 1/16"
**LATCH BACKSET
DOES NOT MATCH
DEVICE**

PUSH SIDE FACE OF DOOR

****FOR DOORS WITH 1/2" THRESHOLD,
MEASURE 1-11/16" TO LOWER LATCH
MOUNTING HOLE FROM TOP OF
THRESHOLD, USE UPPER PIN HOLE
IN BOTTOM ROD TO FASTEN LATCH**

1 3/4"

**DRILL AND TAP
BOTTOM LATCH TO DOOR**

1 11/16"

BOTTOM LATCH

BOTTOM EDGE OF DOOR

DOOR EDGE

BOTTOM STRIKE

FINISHED FLOOR

**FOLD HERE, PLACE
AGAINST FLOOR & DOOR**

13/16"

Ø1"
3/4" DEEP

Ø1/4
1" DEEP

1 3/4"

