

# 6400C - PANIC & 6400CF - FIRE LABELED STEEL DOOR - CVR EXIT DEVICE MODELS

6400 SERIES EXIT DEVICES USING SNB OR SURFACE MOUNT FASTENERS

TEMPLATE: 639338  
REV. 0 05-24-24

## DEVICE

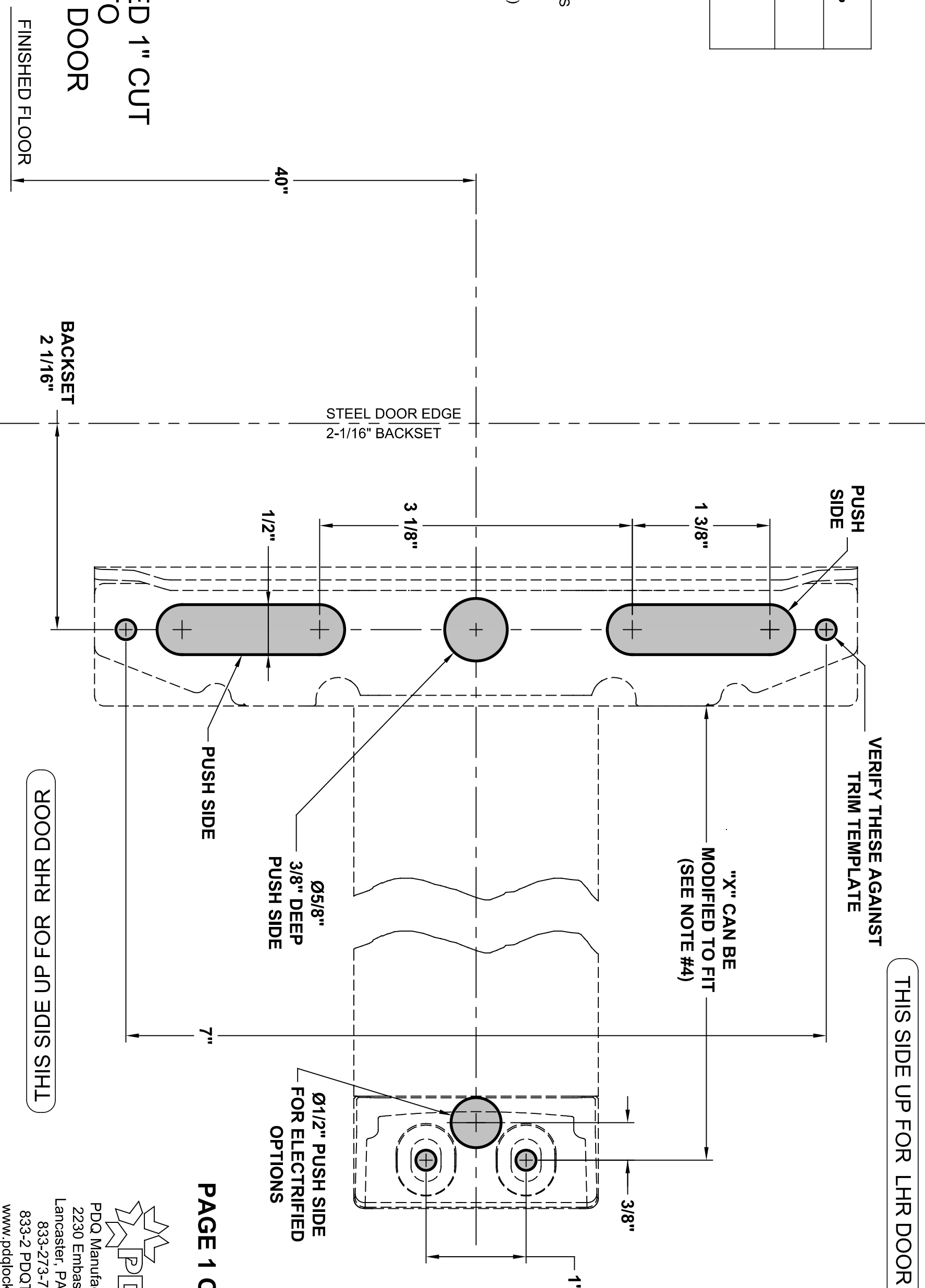
<b>MACHINE SCREWS:</b> USE #7 OR 13/64" DRILL AND 1/4-20 TAP
<b>WOOD SCREWS:</b> USE 5/32" DRILL
<b>SEX NUTS:</b> USE 3/8" DRILL PULL SIDE USE 9/32" DRILL PUSH SIDE

## NOTES:

1. VERIFY PRINTED TO SCALE
2. SEX NUTS MAY BE REQUIRED FOR UNREINFORCED DOORS OR COMPOSITE FIRE DOORS. CONSULT DOOR MANUFACTURER'S RECOMMENDATIONS
3. SEE TRIM TEMPLATE (IF APPLICABLE) FOR RELATED MACHINING DETAILS
4. DIMENSION "X" SIZED FOR DOOR. REFER TO DEVICE INSTRUCTIONS WHEN CUTTING DOWN FOR NARROWER OPENING
5. CHECK PDQ WEBSITE FOR MOST RECENT REVISION [WWW.PDQLOCKS.COM](http://WWW.PDQLOCKS.COM)
6. MINIMUM STILE WIDTH: 3-1/2"

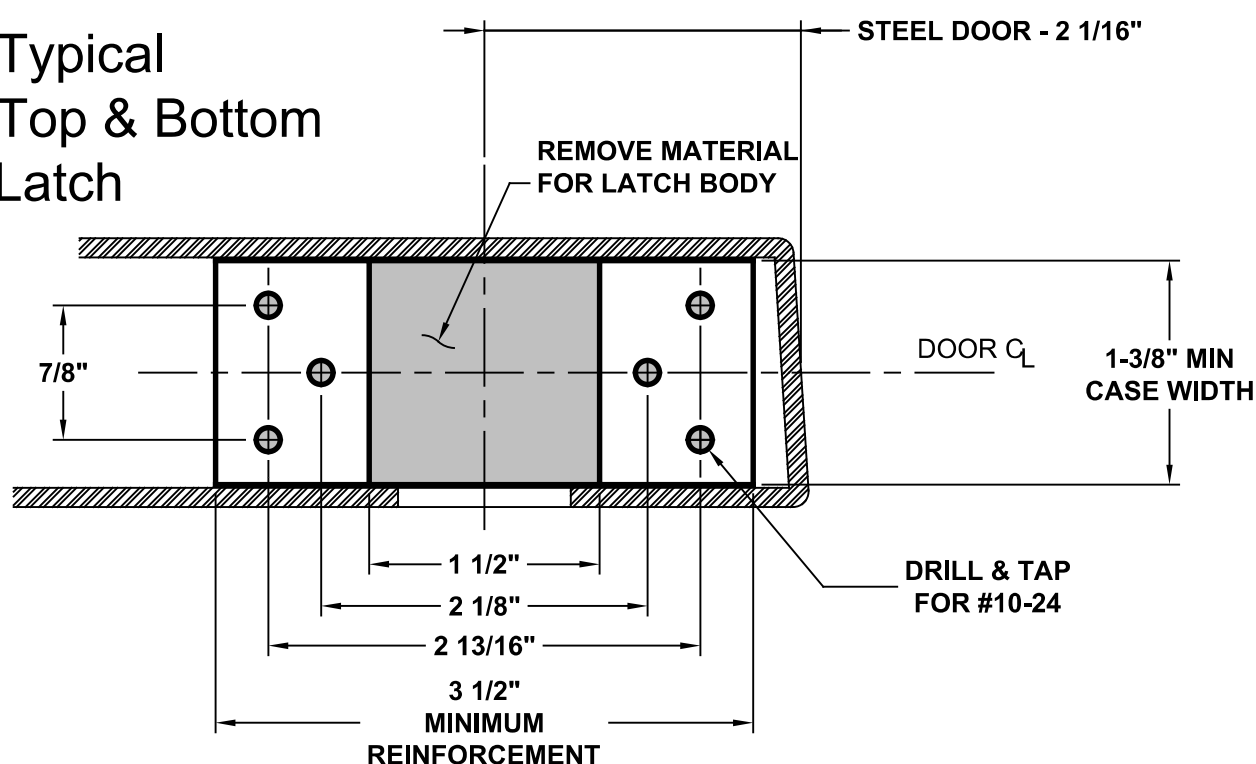
## IMPORTANT:

DEVICE WILL NEED 1" CUT FROM TAIL END TO FIT ON 36" STEEL DOOR

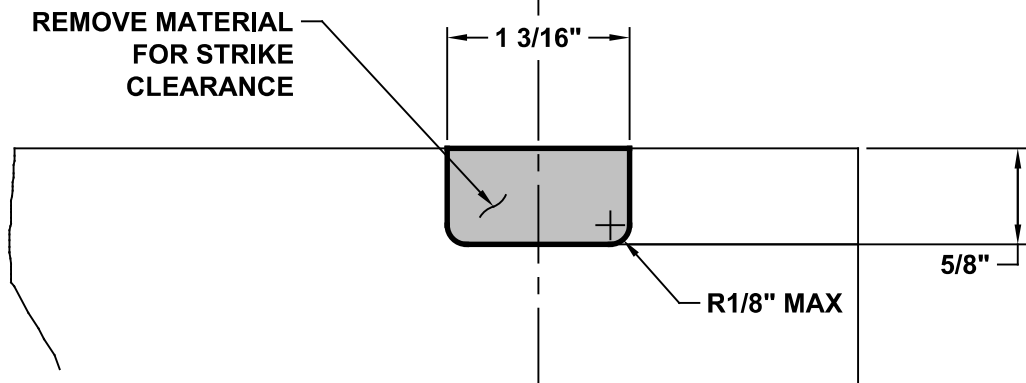


WOOD RHR FOR PNEUMATIC

## Typical Top & Bottom Latch

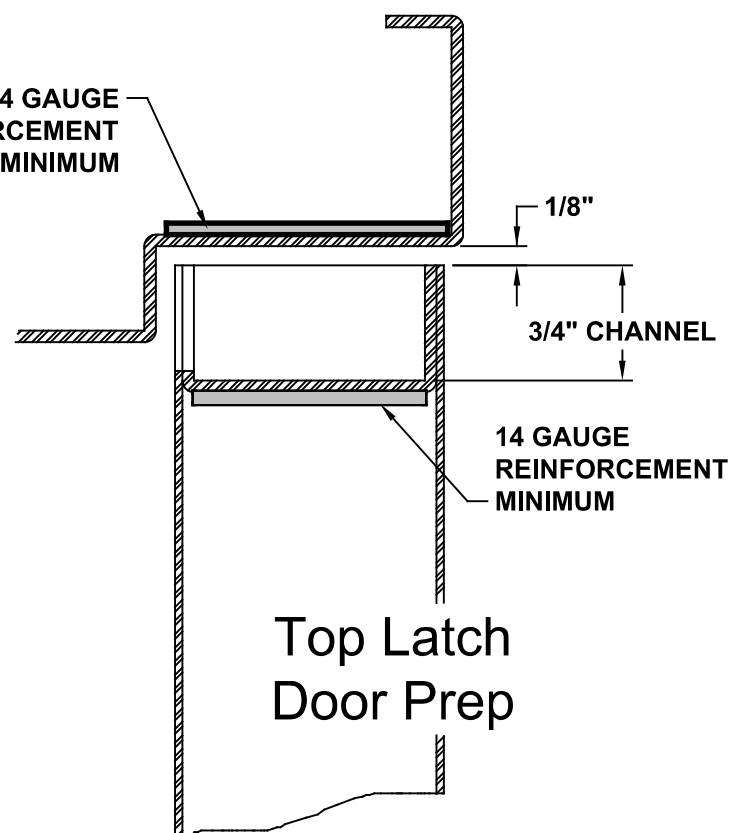


REMOVE MATERIAL FOR STRIKE CLEARANCE



## Top Latch Only - Cut Strike Clearance On Push Side Door Face

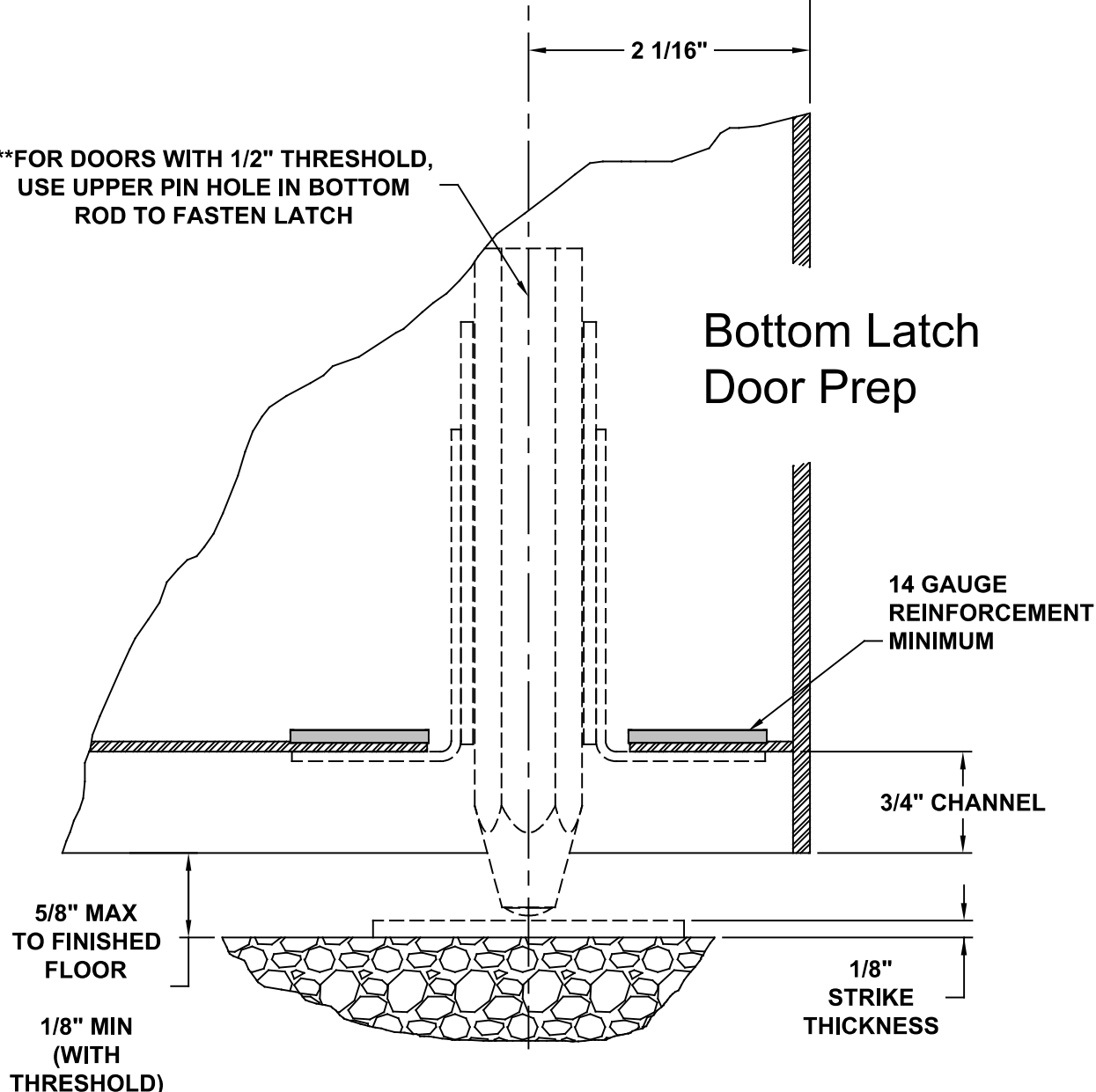
14 GAUGE REINFORCEMENT MINIMUM



## Top Latch Door Prep

\*\*FOR DOORS WITH 1/2" THRESHOLD, USE UPPER PIN HOLE IN BOTTOM ROD TO FASTEN LATCH

## Bottom Latch Door Prep



### NOTES:

1. THIS PAGE NOT TO SCALE
2. STRIKE REINFORCEMENTS MUST BE MINIMUM 14GA STEEL.
3. BOTTOM LATCH LOCATION ASSUMES TYPICAL 5/8" UNDERCUT.
  - a. BOTTOM OF DOOR TO FINISHED FLOOR TO BE 5/8" MAX.
  - b. MINIMUM 1/8" GAP FROM 1/2" THRESHOLD.
  - c. FOR BOTTOM DOOR GAP UNDER 5/16" OR WITH THRESHOLD, USE UPPER PIN HOLE IN BOTTOM ROD.
4. CHECK PDQ WEBSITE FOR MOST RECENT REVISION [WWW.PDQLOCKS.COM](http://WWW.PDQLOCKS.COM)

