

# 6400R - PANIC & 6400RF - FIRE LABELED NARROW RIM EXIT DEVICES FOR WINDSTORM

TEMPLATE: 639323

REV. 1 12/27/22

## 6400 SERIES EXIT DEVICES USING SNB OR SURFACE MOUNT FASTENERS

### DEVICE

**MACHINE SCREWS:**  
USE #7 OR 13/64" DRILL AND 1/4-20 TAP

**WOOD SCREWS:**  
USE 5/32" DRILL

**SEX NUTS:**  
USE 3/8" DRILL PULL SIDE  
USE 9/32" DRILL PUSH SIDE

### STRIKE - ON FRAME

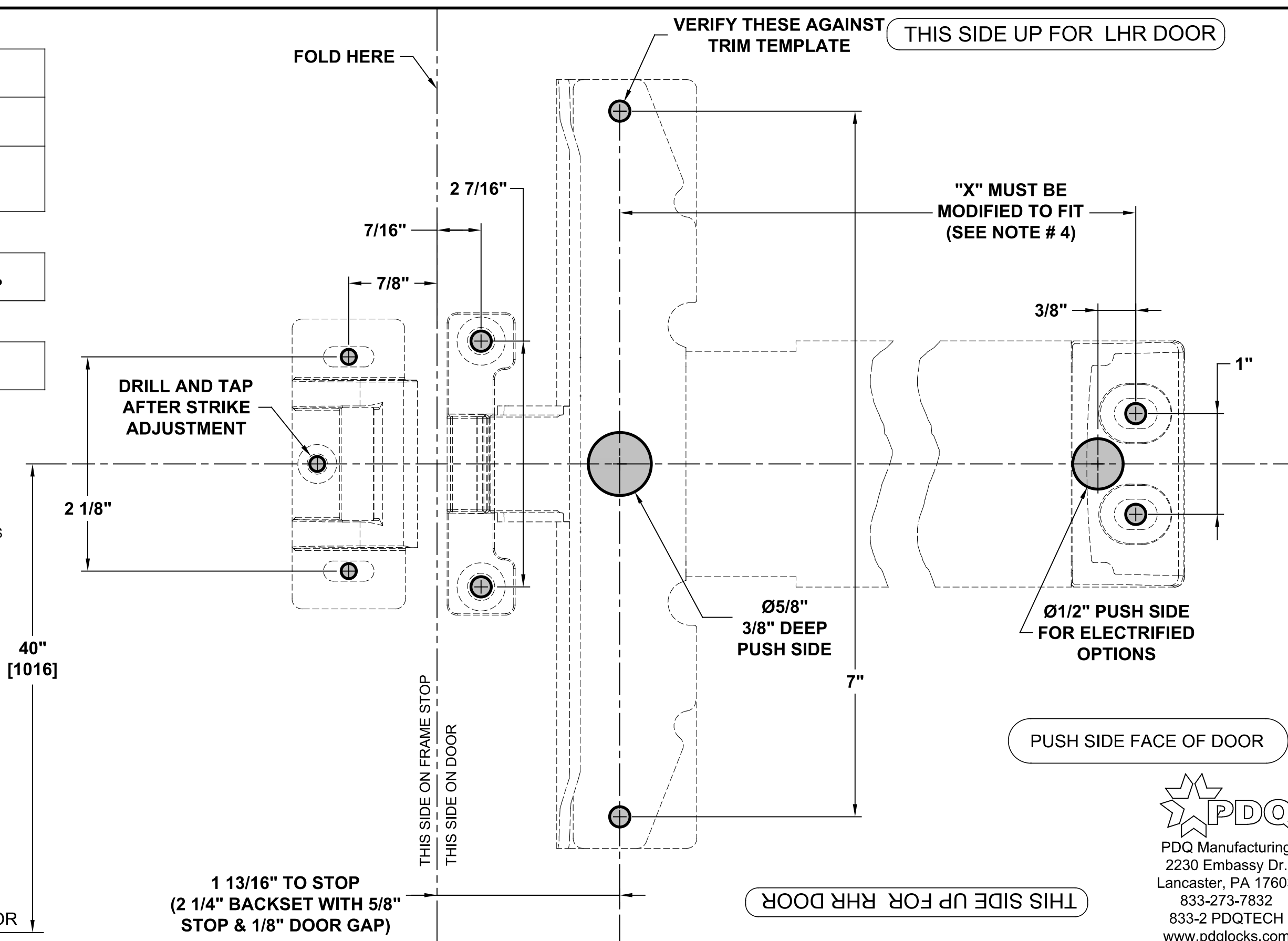
**MACHINE SCREWS:**  
USE #25 OR 5/32" DRILL AND #10-24 TAP

### STRIKE HOOK - ON DOOR

**MACHINE SCREWS:**  
USE #7 OR 13/64" DRILL AND 1/4-20 TAP

### NOTES:

1. VERIFY PRINTED TO SCALE
2. SEX NUTS MAY BE REQUIRED FOR UNREINFORCED DOORS OR COMPOSITE FIRE DOORS. CONSULT DOOR MANUFACTURER'S RECOMMENDATIONS
3. SEE TRIM TEMPLATE (IF APPLICABLE) FOR RELATED MACHINING DETAILS
4. DIMENSION "X" MUST BE CUT REFER TO DEVICE INSTRUCTIONS FOR YOUR APPLICATION
5. CHECK PDQ WEBSITE FOR MOST RECENT REVISION WWW.PDQLOCKS.COM
6. MINIMUM STILE WIDTH: 3 1/8"



PDQ Manufacturing  
2230 Embassy Dr.  
Lancaster, PA 17603  
833-273-7832  
833-2 PDQTECH  
www.pdqlocks.com