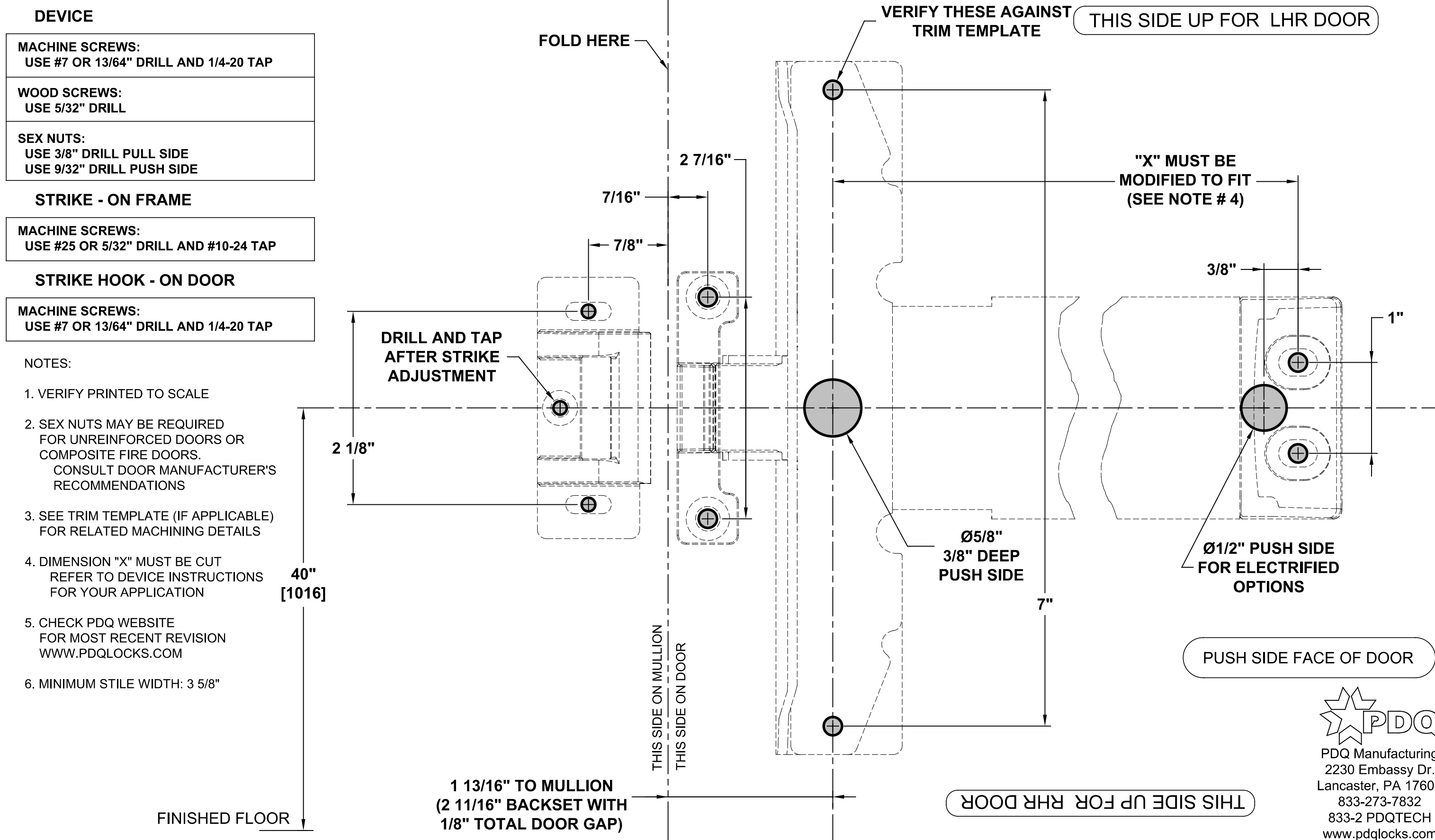


6400RF - FIRE LABELED NARROW RIM EXIT DEVICES WITH 9300F FIRE LABELED MULLION

TEMPLATE: 639334

REV. 1 12/27/22

6400 SERIES EXIT DEVICES USING SNB OR SURFACE MOUNT FASTENERS



- DEVICE**
- MACHINE SCREWS:**
USE #7 OR 13/64" DRILL AND 1/4-20 TAP
- WOOD SCREWS:**
USE 5/32" DRILL
- SEX NUTS:**
USE 3/8" DRILL PULL SIDE
USE 9/32" DRILL PUSH SIDE
- STRIKE - ON FRAME**
- MACHINE SCREWS:**
USE #25 OR 5/32" DRILL AND #10-24 TAP
- STRIKE HOOK - ON DOOR**
- MACHINE SCREWS:**
USE #7 OR 13/64" DRILL AND 1/4-20 TAP

- NOTES:**
1. VERIFY PRINTED TO SCALE
 2. SEX NUTS MAY BE REQUIRED FOR UNREINFORCED DOORS OR COMPOSITE FIRE DOORS. CONSULT DOOR MANUFACTURER'S RECOMMENDATIONS
 3. SEE TRIM TEMPLATE (IF APPLICABLE) FOR RELATED MACHINING DETAILS
 4. DIMENSION "X" MUST BE CUT REFER TO DEVICE INSTRUCTIONS FOR YOUR APPLICATION
 5. CHECK PDQ WEBSITE FOR MOST RECENT REVISION WWW.PDQLOCKS.COM
 6. MINIMUM STILE WIDTH: 3 5/8"

PDQ
 PDQ Manufacturing
 2230 Embassy Dr.
 Lancaster, PA 17603
 833-273-7832
 833-2 PDQTECH
 www.pdqlocks.com