

6300/6400 Trims

Exit Device Trims

Architectural Submittal Sheet

Trims are non-handed and use simple door prep based on a 2 hole bolt pattern with 7" centers, or a 4 hole bolt pattern with 7"x1-3/8" centers.

Narrow escutcheons work with both wide and narrow stile devices. Wide escutcheons work only with wide stile devices.



6N Narrow Escutcheon - A narrow profile escutcheon for 6300 or 6400 device. Available in 6 lever styles, and in 6 functions. Use with narrow stile devices or a wide stile device when a slimmer look is desired.



6W Wide Escutcheon - A wide escutcheon for the 6300 device. Available in 6 lever styles, and 5 functions - including electric locking. Use with wide stile devices, when a more substantial look is desired, or for retrofit where covering existing holes is important.

**Not compatible with 6400 narrow stile devices*



6T Thumb Latch - A grip pull with a thumb latch for 6300 or 6400 devices. Available in 4 functions.

**Not compatible with 6400C narrow stile devices.*



6P Pull Plate - Stainless Steel pull plate for 6300 device.

**Not compatible with 6400 narrow stile devices.*



6G Grip Pull - A grip pull for 6300 or 6400 devices. Made of stainless steel, this grip pull is available in 2 functions.



6S Rose Trim - Rose trim that fits into standard 161 prepped door with thru bolts. Works with 6300 rim, SVR and CVR devices. Available in 3 lever styles and in 4 functions.

**Not compatible with 6400 narrow stile devices*



6C Cylinder only - Order this trim option for cylinder only, NightLatch (F03) Function. Includes rim cylinder or *IC rim housing, collar, and required mounting hardware.

**IC core sold separately*

Lever Styles

PHL



BSN



MIA



ORL



CHI



LAX



6N Narrow Trim

6N Functions

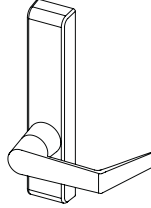
01 Blank

Blank Escutcheon



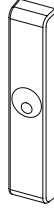
02 Pull Only

Entrance/Pull only when device is dogged. Fixed lever.



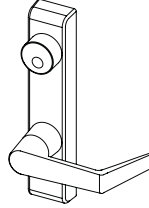
03 Night Latch

Entrance when latch retracted by key. Key removable only when locked.



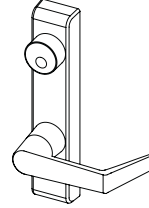
08 Classroom

Key locks or unlocks lever.



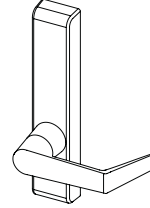
09 Storeroom

Entrance by lever when unlocked by key. Key removable only when locked.



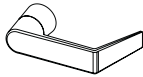
14 Passage

Entrance by lever, always unlocked.



6N Lever Styles

PHL



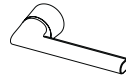
BSN



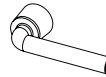
MIA



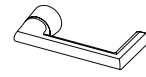
ORL



CHI




LAX



Applicable Devices


- 6400R Narrow Rim Device
- 6400V Narrow Surface Vertical Device
- 6400C Narrow Concealed Vertical Device
- 6300R Wide Stile Rim Device
- 6300V Wide Surface Vertical Device
- 6300C Wide Concealed Vertical Device
- 6300M Wide Mortise Device (Except 03 function)

6N Narrow Stile Trim

6N	APPLICATION	FUNCTION	DESCRIPTION	LEVER
NARROW ESCUTCHEON 	Rim Surface Vertical Rod Concealed Vertical Rod	01	Blank (no lever)	PHL, BSN, MIA, ORL, CHI, LAX
		02	Dummy Trim (Rigid Lever)	
		03	Night Latch (no lever)	
		08	Classroom w/ Lever	
		09	Storeroom w/ Lever	
		14	Passage w Lever	

6N Narrow Mortise Trim

6NM Narrow Stile Mortise Trim

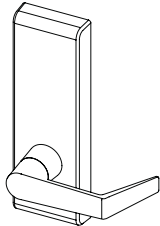
6N	APPLICATION	FUNCTION	DESCRIPTION	LEVER
<p>NARROW ESCUTCHEON</p> 	Mortise	M01	Blank (no lever)	PHL, BSN, MIA, ORL, CHI, LAX
		M02	Dummy Trim (Rigid Lever)	
		M08	Classroom w/ Lever	
		M09	Storeroom w/ Lever	
		M14	Passage w Lever	

6W Wide Trim

6W Functions

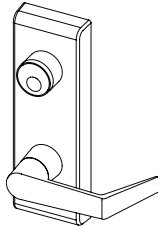
02 Pull Only

Entrance/Pull only when device is dogged. Fixed lever.



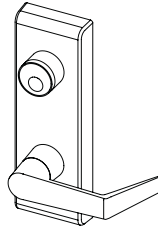
08 Classroom

Key locks or unlocks lever. Conversion kit included to convert locking function.



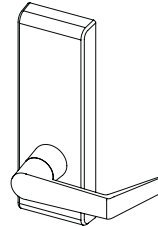
09 Storeroom

Entrance by lever when unlocked by key. Key removable only when locked.



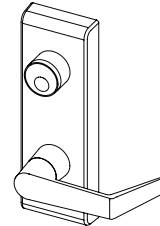
14 Passage

Entrance by lever, always unlocked.



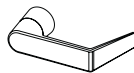
99 Electrified

Locked/Unlocked electronically. FS/FSF configurable. Entry by key. Key does not change lock state.



6W Lever Styles

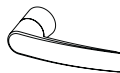
PHL



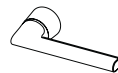
BSN



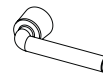
MIA



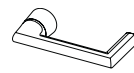
ORL



CHI




LAX



Applicable Devices

- 6300R Wide Stile Rim Device
- 6300V Wide Surface Vertical Device
- 6300C Wide Concealed Vertical Device
- 6300M Wide Mortise Device


6W Wide Stile Trim

6W	APPLICATION	FUNCTION	DESCRIPTION	LEVER
WIDE STILE 	Rim Surface Vertical Rod Concealed Vertical Rod Mortise	02	Dummy Trim (Rigid Lever)	PHL, BSN, MIA, ORL, CHI, LAX
		08	Classroom w/ Lever	
		09	Storeroom w/ Lever	
		14	Passage w/ Lever	
		99	Electrified Storeroom	

6W08 and 6W09 includes conversion kit from factory (6W08 to 6W09 or 6W09 to 6W08)

6W Wide Mortise Trim

6WM Wide Stile Mortise Trim

6W	APPLICATION	FUNCTION	DESCRIPTION	LEVER
WIDE STILE 	Mortise	M02	Dummy Trim (Rigid Lever)	PHL, BSN, MIA, ORL, CHI, LAX
		M08	Classroom w/ Lever	
		M09	Storeroom w/ Lever	
		M14	Passage w/ Lever	
		M99	Electrified Storeroom	

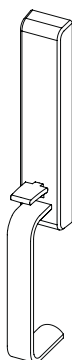
6W08 and 6W09 includes conversion kit from factory (6W08 to 6W09 or 6W09 to 6W08)

6T Thumb Latch Trim

6T Functions

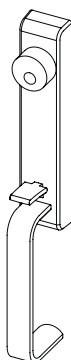
02 Pull Only

Entrance/Pull only when device is dogged. Rigid Thumb piece.



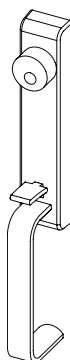
05 Classroom

Key locks or unlocks thumb piece.



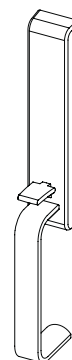
06 Storeroom

Entrance by thumb piece when released by key. Key removable only when locked.



15 Passage


Entrance by lever when unlocked by key. Key removable only when locked



Applicable Devices

- 6300R Wide Stile Rim Device
- 6300V Wide Surface Vertical Device
- 6300C Wide Stile Concealed Vertical Device
- 6400R Narrow Rim Device
- 6400V Narrow Surface Vertical Device
- 6400C Narrow Concealed Vertical Device

6T Thumb Latch Trim

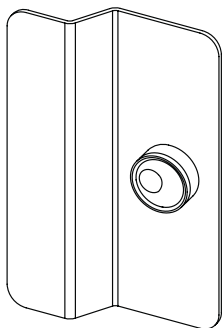
6T	APPLICATION	FUNCTION	DESCRIPTION
THUMB LATCH 	Rim Surface Vertical Rod Concealed Vertical Rod	02	Dummy. Rigid thumb piece.
		05	Classroom
		06	Storeroom
		15	Passage

6P Pull Trim

6P Functions

03 Night Latch


Entrance when latch retracted by key. Key removable only when locked.



Applicable Devices

- 6300R Wide Stile Rim Device
- 6300V Wide Surface Vertical Device
- 6300C Wide Concealed Vertical Device

6P Pull Trim

6P	APPLICATION	FUNCTION	DESCRIPTION
<div>PULL TRIM</div> 	<div>Rim</div> <div>Surface Vertical Rod</div> <div>Concealed Vertical Rod</div>	<div>03</div>	<div>Night Latch</div>

6G Grip Pull Trim

6G Functions

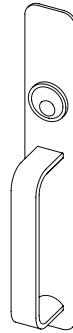
02 Pull Only

Entrance/Pull only when device is dogged.



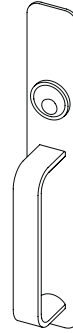
03 Night Latch

Entrance when latch retracted by key. Key removable only when locked.



M03 Mortise Storeroom


Entrance when latch retracted by key. Key removable only when locked.




Applicable Devices

- 6300R Wide Stile Rim Device
- 6300V Wide Surface Vertical Device
- 6300C Wide Concealed Vertical Device
- 6300M Wide Mortise Device
- 6400R Narrow Rim Device
- 6400V Narrow Surface Vertical Device
- 6400C Narrow Concealed Vertical Device

6G Grip Pull Trim

6G	APPLICATION	FUNCTION	DESCRIPTION
GRIP PULL 	Rim Surface Vertical Rod Concealed Vertical Rod	02	Dummy Trim (Grip Pull only)
		03	Night Latch

6GM Grip Pull Mortise Trim

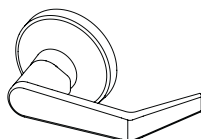
6G	APPLICATION	FUNCTION	DESCRIPTION
GRIP PULL 	Mortise	M02	Dummy Trim (Grip Pull only)
		M03	Night Latch

6S Sectional Trim

6S Functions

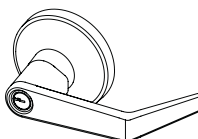
02 Pull Only

Entrance/Pull only when device is dogged. Lever is fixed.



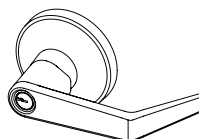
08 Classroom

Key locks or unlocks lever.



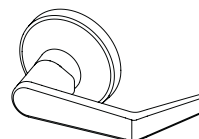
09 Storeroom

Entrance by lever when key inserted. Key removable only when locked.



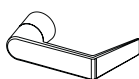
14 Passage

Entrance by lever. Always unlocked.



6S Lever Styles

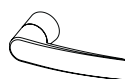
PHL



BSN




MIA



Applicable Devices

- 6300R Wide Stile Rim Device
- 6300V Wide Surface Vertical Device
- 6300C Wide Concealed Vertical Device

6S Sectional Trim

6S	APPLICATION	FUNCTION	DESCRIPTION	LEVER
SECTIONAL LEVER 	Rim Surface Vertical Rod Concealed Vertical Rod	02	Dummy Trim	BSN, MIA, PHL
		08	Classroom w/ Lever	
		09	Storeroom w/ Lever	
		14	Passage w/ Lever	

6C Cylinder Only

6C Cylinder Only



6C Cylinder Only - Order this trim option for cylinder only, Night Latch (F03) Function. Includes rim cylinder or *IC rim housing, collar, and required mounting hardware.

*IC core sold separately

How to Order

Series	Function	Finish	Cylinder Type	Keying
6C	03	630	D	SCC
6C - Cylinder Only - 6300/6400 Device	03 - Night Latch (Rim) M03 - Night Latch (Mortise)	605 - Bright Brass	D Default	SCC - Schlage C
		606 - Satin Brass	L Less Cylinder	Others - See Keyway Table Page
		613 - Dark Bronze	SF6 - SFIC prepped w/ 6 pin core	
		622 - Satin Black	SF7 - SFIC prepped w/ 7 pin core	
		625 - Bright Chrome	SFL - SFIC prepped but less core	
		626 - Satin Chrome	SFC - SFIC prepped w/ construction core	
			SFP - SFIC prepped w/ plastic construction core	
			LF6 - Schlage LFIC prepped w/ Schlage core	
			LFL - Schlage LFIC prepped but less core	
			LFC - Schlage LFIC prepped w/ construction core	

6C Cylinder Only

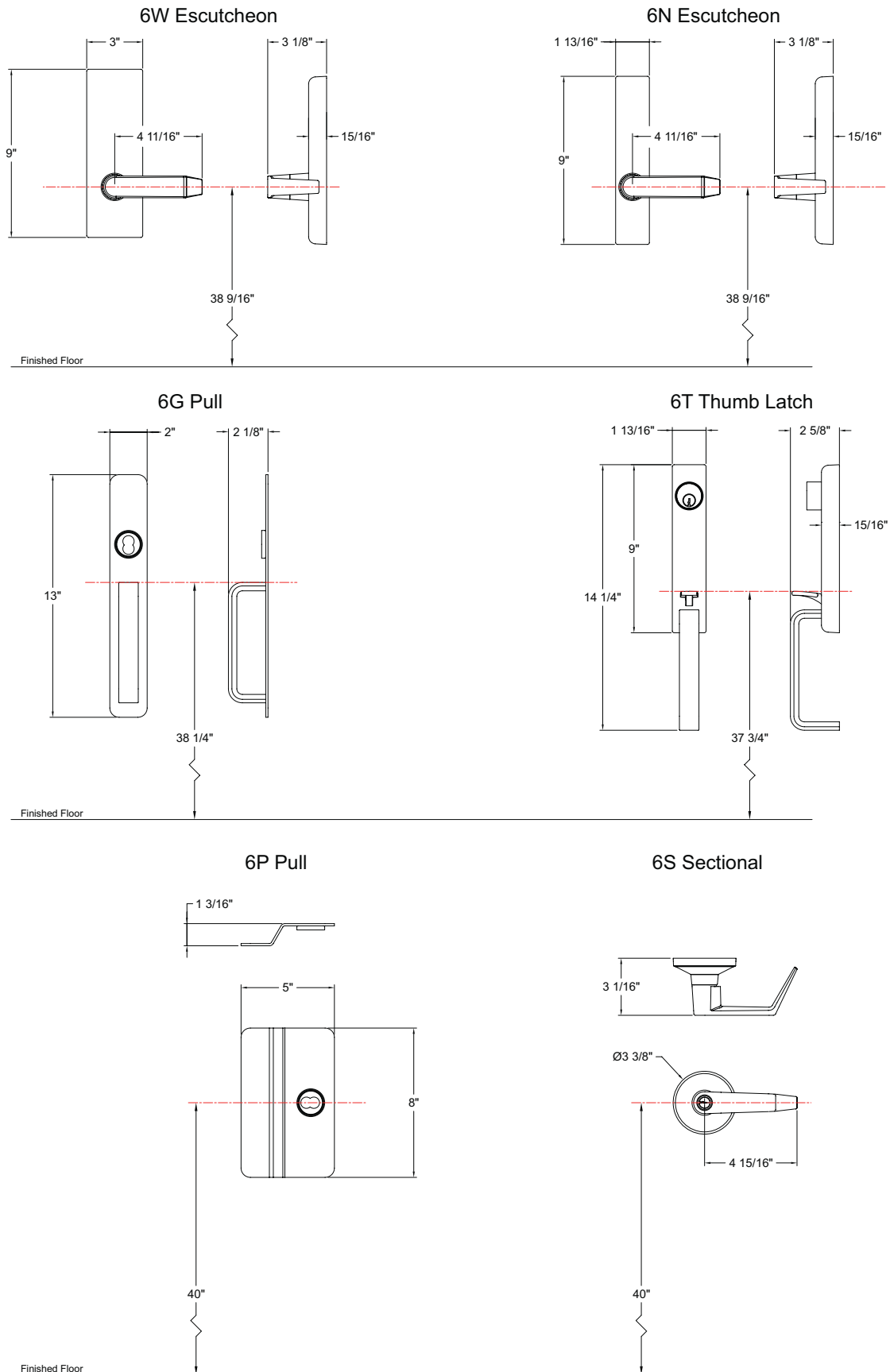
6C	APPLICATION	FUNCTION	DESCRIPTION
CYLINDER ONLY 	Rim Surface Vertical Rod Concealed Vertical Rod	03	6C - Cylinder Only - 6300/6400 Device

6CM Cylinder Only


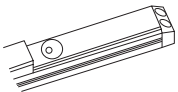
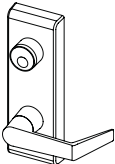
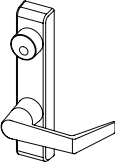
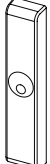
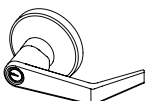
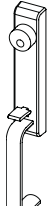
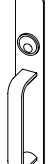
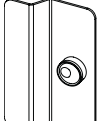
6C	APPLICATION	FUNCTION	DESCRIPTION
CYLINDER ONLY 	Mortise	M03	6CM - Cylinder Only - 6300 Mortise Device

Trim Dimensions

Trim Dimensions



6300/6400 Trims

TRIM TYPE	FUNCTION	IMAGE	STANDARD CYLINDER	BEST SFIC	SCHLAGE STYLE LFIC
CYLINDER ONLY	03 (Less Outside Trim)		Rim cylinder (use rim cylinder included collar, mounting plate & screws)	SFIC Rim Housing (use rim housing included collar, mounting plate & screws)	LFIC Rim Housing (use rim housing included collar, mounting plate & screws)
CYLINDER DOGGING/ALARM KIT	All Devices		1-1/8" Mortise Cylinder 631093 Trim Ring Yale Cam	SFIC 7 pin housing (2) 631093 Trim Rings Yale Cam	LFIC housing 631094 Collar (5/8") Yale Cam
6W	All Keyed Functions		1-1/8" Mortise Cylinder 631094 Collar (5/8") Corbin A01 or Yale Cam	SFIC 7 pin housing 631094 Collar Flipped (3/4") 631093 Trim Ring Corbin A01 or Yale Cam	LFIC housing 631094 Collar Flipped (3/4") 631093 Trim Ring Corbin A01 or Yale Cam
6N	08, 09		1-1/8" Mortise Cylinder 631094 Collar (5/8") Corbin A01 or Yale Cam	SFIC 7 pin housing 631094 Collar Flipped (3/4") 631093 Trim Ring Corbin A01 or Yale Cam	LFIC housing 631094 Collar Flipped (3/4") 631093 Trim Ring Corbin A01 or Yale Cam
6N	03		Rim Cylinder	SFIC rim housing	LFIC rim housing
6S	All Keyed Functions		Must order product with KIK / Standard cylinder lever	Must order product with SFIC lever	Must order product with Schlage style LFIC Lever
6T	All Keyed Functions		1-1/8" Mortise Cylinder 631094 Collar (5/8") Corbin A01 or Yale Cam	SFIC 7 pin housing 631094 Collar Flipped (3/4") 631093 Trim Ring Corbin A01 or Yale Cam	LFIC housing 631094 Collar Flipped (3/4") 631093 Trim Ring Corbin A01 or Yale Cam
6G	All Keyed Functions		Rim Cylinder Standard rim cylinder trim ring	SFIC rim housing Standard rim cylinder trim ring	LFIC rim housing Standard rim cylinder trim ring
6P	All Keyed Functions		Rim Cylinder Standard rim cylinder trim ring	SFIC rim housing Standard rim cylinder trim ring	LFIC rim housing Standard rim cylinder trim ring

6300/6400 Trim Compatibility

Trim Compatibility (Narrow/Medium Stile Aluminum Doors)

Stile	Device Type	Compatible Trims
2 - 1/8" Stile Doors	6400 Narrow Stile Devices	6C Cylinder only: Function (03)
		6C Cylinder with 9E Pull: Function (03) Note: Pull for 6400 CVR Device must be 10"CTC
3 - 1/2" Stile Doors	6400 Narrow Stile Devices	6C Cylinder only: Function (03)
		6C Cylinder with 9E Pull: Function (03) Note: Pull for 6400 CVR Device must offset from device centerline if other than 10"CTC
		6N Escutcheon: Function (01, 02, 03, 08, 09, 14)
		6T Escutcheon: Function (05, 06, 15) Note: This trim does not work on 6400 CVR Device
		6G Pull: Function (02, 03)
3 - 1/2" Stile Doors	6300 Wide Stile Devices	6C Cylinder only: Function (03)
		6C Cylinder with 9E Pull: Function (03)
		6W Escutcheon: Function (02, 08, 09, 14, 99)
		6N Escutcheon: Function (01, 02, 03, 08, 09, 14)
		6T Escutcheon: Function (05, 06, 15)
		6P Pull: Function (02, 03)
		6G Pull: Function (02, 03)

Trim Compatibility (Steel/Wood Doors)

Device Type	Compatible Trims
6400 Narrow Stile Devices	6C Cylinder only: Function (03)
	6C Cylinder with 9E Pull: Function (03)
	6N Escutcheon: Function (01, 02, 03, 08, 09, 14)
	6T Escutcheon: Function (05, 06, 15) Note: This trim does not work on 6400 CVR Device
	6G Pull: Function (02, 03)
6300 Wide Stile Devices	6C Cylinder only: Function (03)
	6C Cylinder with 9E Pull: Function (03)
	6W Escutcheon: Function (02, 08, 09, 14, 99)
	6N Escutcheon: Function (01, 02, 03, 08, 09, 14)
	6T Escutcheon: Function (05, 06, 15)
	6P Pull: Function (02, 03)
	6G Pull: Function (02, 03)

6300/6400 Trims Finishes

Finishes

605

Bright Brass

Gold anodized aluminum rail (matte), push bar sides and dogging filler Polished brass plated cast head cover and end caps. Polished brass plated heavy gauge stamped push bar face.



606

Satin Brass

Gold anodized aluminum rail (matte), push bar sides and dogging filler Brushed brass plated cast head cover and end caps. Brushed brass plated heavy gauge stamped push bar face.



613

Dark Bronze

Dark bronze anodized aluminum rail, push bar sides and dogging filler Powder coated cast head cover and end caps. Powder coated heavy gauge stamped push bar face.



622

Flat Black

Black anodized aluminum rail, push bar sides and dogging filler Powder coated cast head cover and end caps. Powder coated heavy gauge stamped push bar face



625

Bright Chrome

Clear anodized aluminum rail (matte), push bar sides and dogging filler Polished chrome plated cast head cover and end caps. Polished chrome plated heavy gauge stamped push bar face.



626

Satin Chrome

Clear anodized aluminum rail (matte), push bar sides and dogging filler Brushed chrome plated cast head cover and end caps. Brushed chrome plated heavy gauge stamped push bar face.



630

Satin Stainless

Clear anodized aluminum rail (matte), push bar sides and dogging filler Plated (stainless look) cast head cover and end caps. Brushed stainless heavy gauge stamped push bar face.



Finish designation does not specify base material, only color and appearance. Not all products are available in all finishes listed.