



6300/6400 Series

Wide Stile/Narrow Stile Architectural Exit Device

*Patent Pending

Table of Contents

3	Introducing the 6300/6400 Series Architectural Exit Devices
4	How to Order Exit Device
	6300/6400 Exit Devices
5	Rim Devices
6	Surface Vertical Rod Devices
7	Concealed Vertical Rod Devices
8	Mortise Device
9	Dummy Device
10	Device Ordering Options
11	Rim Strike Options
12	Introducing the 6300/6400 Series Trims
13	How to Order Trims
14	Exit Device Trims
22	Trim Compatibility
24	Electrified Options
28	Cylinders & Keying
30	9300 Mullion
31	Additional Information
32	Fire Ratings
33	Device Dimensions
34	Trim Dimensions
35	Door Width Chart/Cross Reference
36	Finishes

Customer Support and Information



717.656.4281



help@pdqlocks.com



www.pdqlocks.com

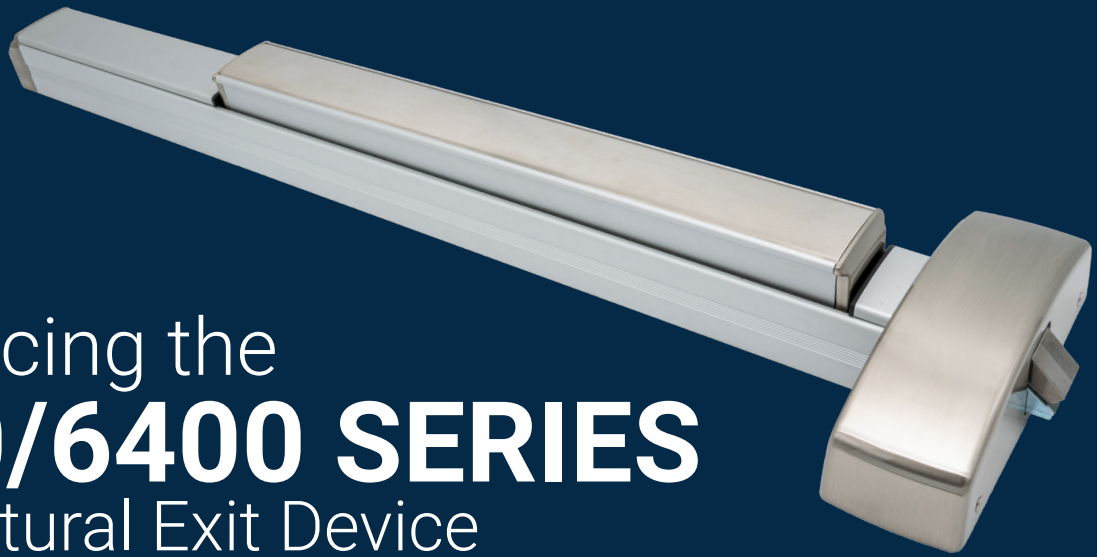


www.youtube.com/user/PDQLocks

Ordering

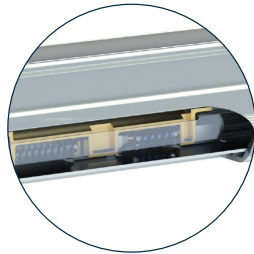
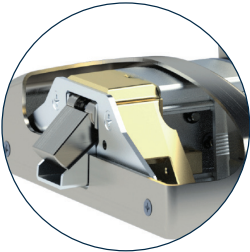
orders@pdqlocks.com

Introducing the **6300/6400 SERIES** Architectural Exit Device

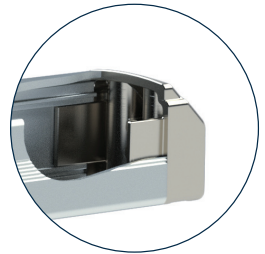
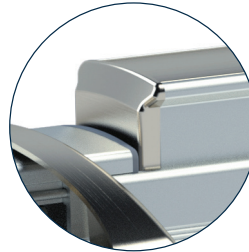


Highlights

Chassis support is cast for high strength.



Push bar has angled ends and is nearly flush when dogged.



Flush end cap is standard, heavy duty engineered casting keys into the rail for ultimate pry resistance.

Cush spring quiets device in both directions. Compression spring returns the touch bar providing more reliability than a torsion type spring.

Features

- Rugged, reliable, flexible, and simple design
- Designed & Assembled in Lancaster, PA
- Patent Pending
- Quiet operation - large heavy-duty spring cushion quiets both the compression/extension of the push bar
- Internal compression spring ensures long lasting push bar return
- Engineered strong and overbuilt for the most demanding environments
- Durable, heavy-duty flush end cap is standard and resist prying
- Stands up to cart abuse, heavy-duty flush end cap and tapered push bar designed to deflect hits and minimize damage
- Simple field door prep and installation
- Dogging holds bar in a retracted position nearly flush with head cover and rail
- Hex Key provided to dog/release the device
- No exposed screws on back of bar
- True 2-3/4" backset (with 5/8" frame stop and 1/8" door gap)
- Wood and machine screws included with each device
- Devices and trim are non-handed
- Ten (10) year warranty



Rim
6300R / 6400R



Surface Vertical Rod
6300V / 6400V



Concealed Vertical Rod
6300C / 6400C



Mortise
6300M

6300/6400 Exit Device

How to Order

Series	For Door Width	Device Type	Rating	Finish	Options	Electrified Options
63	00	R	--	630	--	--
63 - Wide Stile Device 64 - Narrow Stile Device	00 - 36" Door 10 - 48" Door 20 - 24" Door	R - Rim Device V - SVR Device C - CVR Device D - Dummy Device M - Wide Stile Mortise Device*	Blank - Panic Rated F - Fire Rated	605 - Bright Brass 606 - Satin Brass 613 - Dark Bronze 622 - Satin Black 625 - Bright Chrome 626 - Satin Chrome 630 - Satin Stainless 630F - Stainless	Dogging (Panic Rated Only): Blank - Hex Key Dogging CD - Cylinder Dogging LD - Less Dogging* Strikes: BS - Blade Stop Strike (Rim) DD - Double Door Strike (Rim) CWD - CVR Wood Door LBR - Less Bottom Rod (SVR/CVR) LBR-FP - Less Bottom Rod with Fire Pin (SVR/CVR) WS - Windstorm Rated (Rim & SVR) EC - End Cap Cover TLA - Head Cover SNB - Sex Nuts & Bolts AM - Anti-Microbial SK - Shim Kit SHS - Security Head Screws 5P - Accessibility Device (5 lb maximum push force) 7 - 7' door (default) 8 - 8' door 10 - 8'-10' Door	MLR - Motorized Latch Retr. AL - Alarm Kit* SS - Signal Switch on touch bar LM - Latchbolt Monitor ISM - Industry Standard Molex Connector ALHW - Alarm kit hard wired DE - Delayed Egress*

*Mortise in wide stile device only

*Multiple Selections Allowed
 *Dogging options only apply to Panic Rated

*MLR can be combined with LM & SS
 *AL can be combined with LM
 *MLR and AL cannot be combined
 *ISM available on all
 *AL - specify handing
 *DE - can be combined with LM only

Cylinder Dogging Part Number Additions

CYLINDER TYPE	KEYWAY	KEYING	24" DEVICE
D	SCC	KD	No cut
D Default L Less Cylinder SF6 Lock is SFIC prepped w/ 6 pin core SF7 Lock is SFIC prepped w/ 7 pin core SFL Lock is SFIC prepped but less core SFC Lock is SFIC prepped w/ construction core SFP Lock is SFIC prepped w/ plastic construction core LF6 Lock is Schlage LFIC prepped w/ Schlage core LFL Lock is Schlage LFIC prepped but less core LFC Lock is Schlage LFIC prepped w/ construction core *Cores sold separately - option only specifies factory installation *Cylinder only needs to be specified for cylinder dogging	SCC - Schlage C OTHERS AVAILABLE	KD - Keyed Different KA - Keyed Like K0 - Zero Bitted MK - Master Keyed CMK - Construction Keyed GMK - Grand Master Keyed	No electric options

Rim Devices

6300R Wide Stile/6400R Narrow Stile

Panic & Fire Rated

6300R/RF - Wide Stile Rim exit device with $\frac{3}{4}$ " pullman latch. Use for wide stile single door applications or for double door applications with a mullion.

6400R/RF - Narrow Stile Rim exit device with $\frac{3}{4}$ " pullman latch. Use for narrow stile single door applications or for double door applications with a mullion. Can also be used when a narrow look is desired.



Specifications

Rail	• Extruded aluminum • Specify 630F for full stainless surfaces (roll formed)
Latch	• Stainless steel dead locking with $\frac{3}{4}$ " throw
Hand	• Device is non-handed • Trim is non-handed or field reversible
Dogging	• Hex key dogging standard • Cylinder dogging optional • Dogging not available for fire labeled devices
Minimum Stile Width	• 6300 - 3-1/2" • 6400 - 2-1/8"
Door Thickness	• 1-3/4" - 2" (Consult factory for other)
Door Width	• 24", 36", 48" standard
Door Height	• Panic - Up to 10' • Fire - See fire ratings charts page 26
Strike Options	• Default roller • Blade stop • Double door • Windstorm/Fire Mullion - Panic Mullion uses standard roller strike
Finishes	• 605 - Polished Brass, 606 - Satin Brass, 613 - Dark Bronze, 622 - Flat Black, 626 - Satin Chrome, 630 - Satin Stainless Steel, 630F - Full Satin Stainless Surfaces • Optional Anti Microbial Coating available on 626, 630 & 630F
Fasteners	• Includes machine and wood screws • SNB Optional
Warranty	• Ten (10) year limited warranty
Electrified Options	• Motorized Latch Retraction • Request to Exit/Signal Switch • Alarmed Exit • Latch Bolt Monitor • ISMC Connectors • Delayed Egress
Certifications: Compliances: Listings:	• Listed for UL 305 "Panic", listed for UL 10C "Fire Exit Hardware" up to 3 hours, listed for UL 294 "Delayed Egress" • Certified to ANSI/BHMA A156.3 Grade 1 • FL #40297 +60/-65 psf 4080 16ga Single • FL #40297 +50/-50 psf 4080 18ga Single • Complies with ADA (Americans with Disabilities Act) and ICC/ANSI 117.1 for Accessible and Usable Buildings • Meets requirements of the BAA as a COTS product manufactured in the United States • Meets CBC Chapter 11B-309.4 when ordered with 5P option

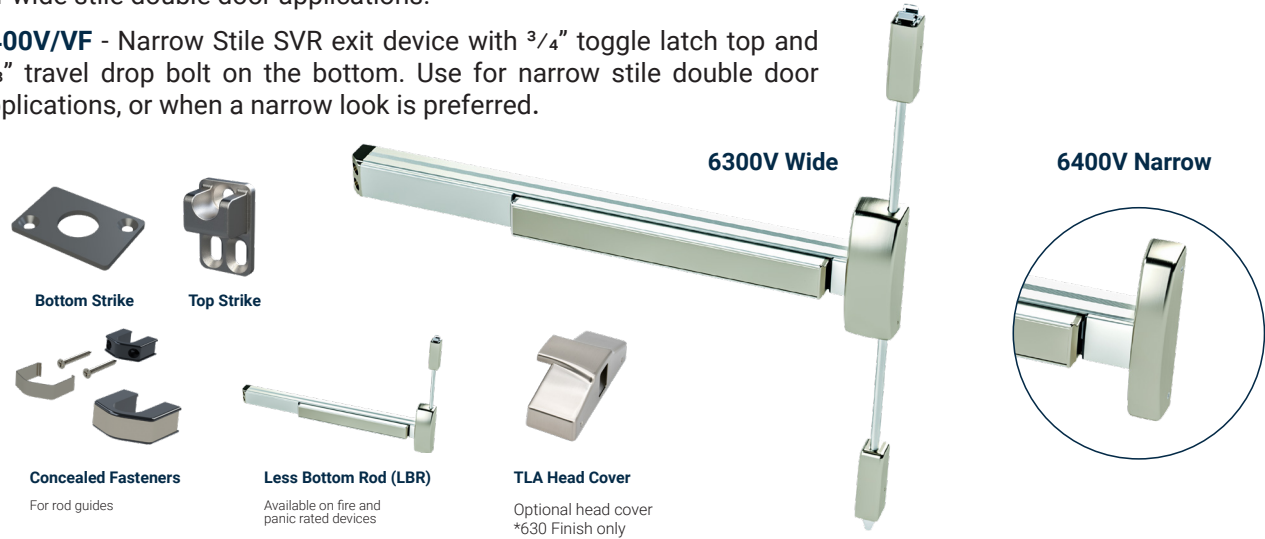
Surface Vertical Rod Device

6300V Wide Stile/6400V Narrow Stile

Panic & Fire Rated

6300V/VF - Wide Stile SVR exit device with 3/4" toggle latch top, and 5/8" travel drop bolt on the bottom. Use for wide stile double door applications.

6400V/VF - Narrow Stile SVR exit device with 3/4" toggle latch top and 5/8" travel drop bolt on the bottom. Use for narrow stile double door applications, or when a narrow look is preferred.



Specifications

Rail	• Extruded aluminum • Specify 630F for full stainless surfaces (roll formed)
Latch	• Top - Stainless Steel 3/4" toggle • Bottom - 5/8" Travel Drop Bolt • Less bottom rod option
Hand	• Device is non-handed • Trim is non-handed or field reversible
Dogging	• Hex key dogging standard • Cylinder dogging optional • Dogging not available for fire labeled devices
Minimum Stile Width	• 6300 - 3-1/2" • 6400 - 2-1/8"
Door Thickness	• 1-3/4" - 2" (Consult factory for other)
Door Width	• 24", 36", 48" standard
Door Height	• Panic - Up to 10' • Fire - See fire ratings charts page 26
Strike	• Cast top strike, plate bottom strike
Finishes	• 605 - Polished Brass, 606 - Satin Brass, 613 - Dark Bronze, 622 - Flat Black, 626 - Satin Chrome, 630 - Satin Stainless Steel, 630F - Full Satin Stainless Surfaces • Optional Anti-Microbial Coating available on 626, 630 & 630F
Fasteners	• Includes machine screws and wood screws • SNB Optional
Warranty	• Ten (10) year limited warranty
Electrified Options	• Motorized Latch Retraction • Request to Exit/Signal Switch • Alarmed Exit • Latch Bolt Monitor • ISMC Connectors • Delayed Egress (Can only be used on a door with a 3 1/2" or larger stile)
Certifications: Compliances: Listings:	• Listed for UL 305 "Panic", listed for UL 10C "Fire Exit Hardware" up to 3 hours. • ANSI/BHMA A156.3 Grade 1 • Complies with ADA (Americans with Disabilities Act) and ICC/ANSI 117.1 for Accessible and Usable Buildings • FL #40297 +50/-50 psf 8080 18ga Pair • Meets requirements of the BAA as a COTS product manufactured in the United States • Meets CBC Chapter 11B-309.4 when ordered with 5P option (Available with Top & Bottom Rod and Less Bottom Rod (LBR))

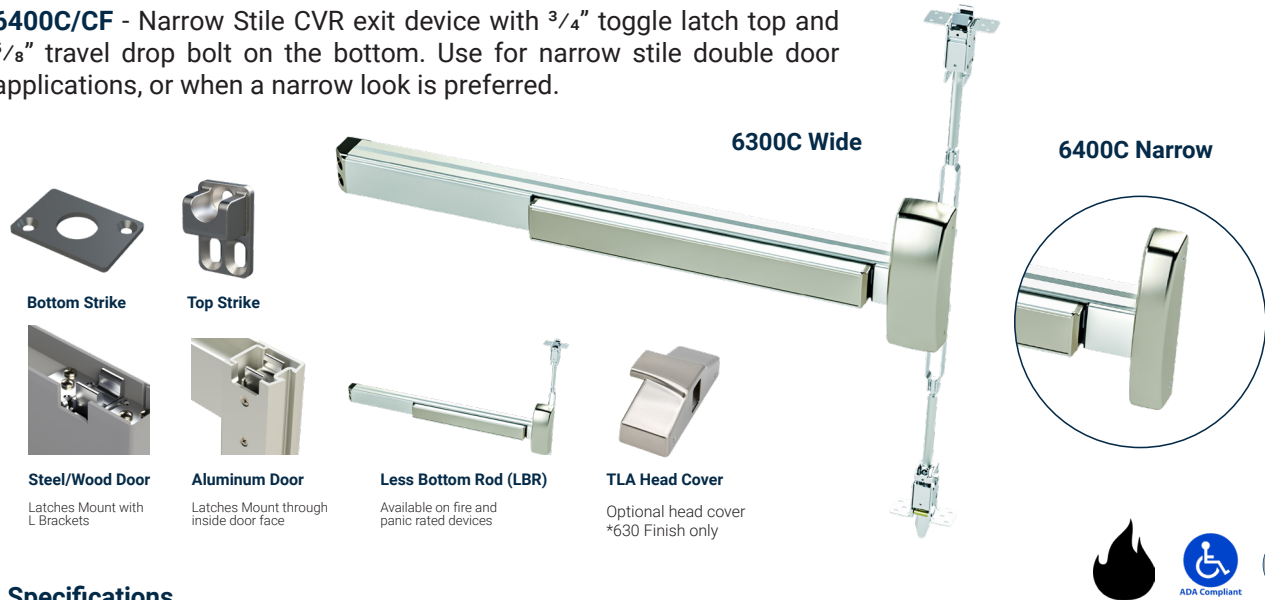
Concealed Vertical Rod Device

6300C Wide Stile/6400C Narrow Stile

Panic & Fire Rate

6300C/CF - Wide Stile CVR exit device with $\frac{3}{4}$ " toggle latch top, and $\frac{5}{8}$ " travel drop bolt on the bottom. Use for wide stile double door applications and for single door applications where more security is needed.

6400C/CF - Narrow Stile CVR exit device with $\frac{3}{4}$ " toggle latch top and $\frac{5}{8}$ " travel drop bolt on the bottom. Use for narrow stile double door applications, or when a narrow look is preferred.



Specifications

Rail	<ul style="list-style-type: none"> Extruded aluminum Specify 630F for full stainless surfaces (roll formed)
Latch	<ul style="list-style-type: none"> Top - Stainless Steel $\frac{3}{4}$" toggle Bottom - $\frac{5}{8}$" Travel Drop Bolt Less bottom rod option
Hand	<ul style="list-style-type: none"> Device is non-handed Trim is non-handed or field reversible
Dogging	<ul style="list-style-type: none"> Hex key dogging standard Cylinder dogging optional Dogging not available for fire labeled devices
Minimum Stile Width	<ul style="list-style-type: none"> 6300 - 3-1/2" 6400 - 2-1/8"
Door Thickness	<ul style="list-style-type: none"> 1-3/4" - 2"
Door Width	<ul style="list-style-type: none"> 24", 36", 48" standard
Door Height	<ul style="list-style-type: none"> Panic - Up to 10' Fire - See fire ratings charts page 26
Strike	<ul style="list-style-type: none"> Cast top strike, plated bottom strike
Finishes	<ul style="list-style-type: none"> 605 - Polished Brass, 606 - Satin Brass, 613 - Dark Bronze, 622 - Flat Black, 626 - Satin Chrome, 630 - Satin Stainless Steel, 630F - Full Satin Stainless Surfaces Optional Anti-Microbial Coating available on 626, 630 & 630F
Fasteners	<ul style="list-style-type: none"> Includes machine and wood screws SNB Optional
Warranty	<ul style="list-style-type: none"> Ten (10) year limited warranty
Electrified Options	<ul style="list-style-type: none"> Motorized Latch Retraction Request to Exit/Signal Switch Alarmed Exit Latch Bolt Monitor ISMC Connectors
Certifications: Complies: Listings:	<ul style="list-style-type: none"> Listed for UL 305 "Panic", listed for UL 10C "Fire Exit Hardware" up to 3 hours. Complies with ADA (Americans with Disabilities Act) and ICC/ANSI 117.1 for Accessible and Usable Buildings Meets requirements of the BAA as a COTS product manufactured in the United States Certified to ANSI/BHMA A156.3 Grade 1 Meets CBC Chapter 11B-309.4 when ordered with 5P option (Available with Top & Bottom Rod and Less Bottom Rod (LBR))



Mortise Device

6300M Wide Stile

Panic & Fire Rate

6300M - Wide Stile Mortise exit device with $\frac{3}{4}$ " throw latch bolt. Use for wide stile single door applications. Also, use for retrofit or pair with SVR/CVR/flush bolts and open back strike.

- This device is built around our signature MR series mortise lock. Easily retrofit an existing mortise lock opening with a mortise device.



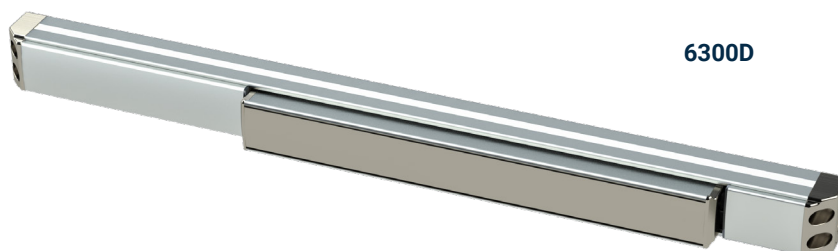
Specifications

Rail	• Extruded aluminum • Specify 630F for full stainless surfaces (roll formed)
Latch	• Stainless steel dead locking with $\frac{3}{4}$ " throw
Hand	• Field reversible
Dogging	• Hex key dogging standard • Cylinder dogging optional • Dogging not available for fire labeled devices
Minimum Stile Width	• 5"
Door Thickness	• 1- $\frac{3}{4}$ " - 2"
Door Width	• 24", 36", 48" standard
Door Height	• Panic - Up to 10' • Fire - See fire ratings charts page 26
Strike Options	• Default ASA (4-7/8")
Finishes	• 605 - Polished Brass, 606 - Satin Brass, 613 - Oil Rubbed Bronze, 622 - Flat Black, 626 - Satin Chrome, 630 - Satin Stainless Steel, 630F - Full Satin Stainless Surfaces • Optional Anti Microbial Coating available on 626, 630 & 630F
Fasteners	• Includes machine screws and wood screws • SNB Optional
Warranty	• Ten (10) year limited warranty
Electrified Options	• Motorized Latch Retraction • Request to Exit/Signal Switch • Alarmed Exit • Latch Bolt Monitor • ISMC Connectors
Certifications: Compliances: Listings:	• Listed for UL 305 "Panic", listed for UL 10C "Fire Exit Hardware" up to 90 minutes. • Complies with ADA (Americans with Disabilities Act) and ICC/ANSI 117.1 for Accessible and Usable Buildings • Meets requirements of the BAA as a COTS product manufactured in the United States

Dummy Device

6300D Dummy

6300D - A dummy device with no latching. The device comes with an active push bar, but can also be dogged/locked down with the included dogging kit. Order with a signal switch to operate a mag lock or other electronic devices. The device is commonly used on inside vestibule doors where latching is not required, or as an electrical switch for an auxiliary device.



6300D



Specifications

Rail	• Extruded aluminum
Hand	• Device is non-handed
Dogging	• Dogging standard • Active push bar, dog to make inactive
Minimum Stile Width	• 6300 - 3-1/2"
Door Thickness	• 1-3/4" - 2" (Consult factory for other)
Door Width	• 24", 36", 48" standard
Finishes	• 605 - Polished Brass, 606 - Satin Brass, 613 - Dark Bronze, 622 - Flat Black, 626 - Satin Chrome, 630 - Satin Stainless Steel, 630F - Full Satin Stainless Surfaces • Optional Anti Microbial Coating available on 626, 630 & 630F
Fasteners	• Includes machine and wood screws • SNB Optional
Warranty	• Ten (10) year limited warranty
Electrified Options	• Request to Exit/Signal Switch • ISMC Connectors
Certifications: Compliances: Listings:	• Complies with ADA (Americans with Disabilities Act) and ICC/ANSI 117.1 for Accessible and Usable Buildings • Meets requirements of the BAA as a COTS product manufactured in the United States

6300C / 6400C Device Ordering Options Explained

The following options are available when ordering 6300/6400 devices.

630F

This finish option provides a device with main rail, push bar, and filler plates fully clad in brushed stainless steel.

LBR

Less Bottom Rod is available on SVR and CVR devices. This option deletes the bottom latch on applications where the bottom latch would impede access, or where a floor strike is not desired. LBR option is available on both panic and fire rated devices.

EC

End Cap Cover option provides a cover for the standard end cap. Can be used if the look is preferred, or to cover the end of the rail on devices that have been cut down.

TLA

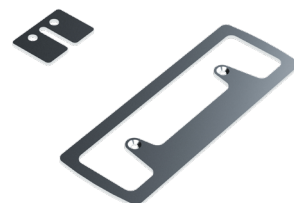
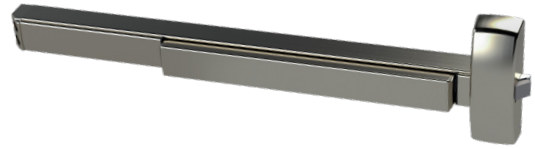
The TLA head cover can be ordered to make the 6300 device better match the previous generation 6200 devices. The head cover is available in 630 finish only.

SNB

Order the SNB option if Sex Nuts are required. These are used on devices when trim is not used, and door construction is not sufficient to hold screws (such as wood or composite core).

SK

The Shim Kit is used to space the device out from the door. Shims are 1/8" Thick. Use multiple shims for additional clearance.



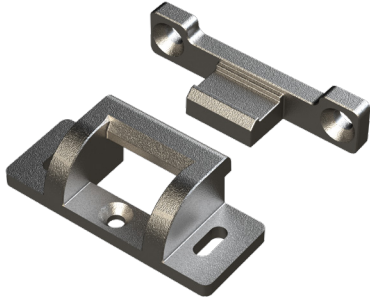
Rim Strike Ordering Options

The following Rim Strike options are available when ordering 6300/6400 devices.

BS – Blade Stop Strike (631041) – Rim Device

This strike is used on aluminum store front doors with a 1 / 2" blade stop. Strike comes with a protective plate to latch rubbing on frame and required mounting hardware.

Strike is optional on both 6300 and 6400 devices.



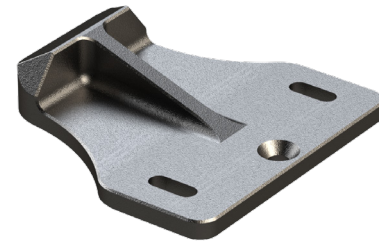
ML – Mullion Fire Strike (639080) – Rim Device

This strike must be used for fire labeled rim devices when used with the 9300F mullion. It is also used for windstorm HVHZ labeled devices.

(2) ML strikes are included with every fire rated mullion.

DD – Double Door Strike (631035) – Rim Device

This strike is used to mount a rim device on a pair of doors where one door is fixed by another means (e.g. Flush bolts, Surface bolts)



Rim Device Stile Width Chart

Order Option	Strike #	Application	6300 Min Stile	6400 Min Stile
Default Panic	639027	Standard Panic Labeled	4-1/4"	3-1/8"
Default Fire	639057	Standard Fire Labeled	4-1/4"	3-1/8"
Default Panic	639027	Panic Labeled Mullion	4-3/4"	3-5/8"
ML	639080	Fire Labeled Mullion	4-7/8"	3-3/4"
WS	639080	Windstorm	4-3/8"	3-1/4"
DD	631035	Double Door Strike	4-1/4"	3-1/8"
BS	631041	Panic Labeled Blade Stop	3-1/2"	2-1/8"

Introducing the 6300/6400 Trim Family

Trims are non-handed and use simple door prep based on a 2 hole bolt pattern with 7" centers, or a 4 hole bolt pattern with 7"x1-3/8" centers.

Narrow escutcheons work with both wide and narrow stile devices. Wide escutcheons work only with wide stile devices.



6N Narrow Escutcheon - A narrow profile escutcheon for 6300 or 6400 device. Available in 6 lever styles, and in 6 functions. Use with narrow stile devices or a wide stile device when a slimmer look is desired.



6W Wide Escutcheon - A wide escutcheon for the 6300 device. Available in 6 lever styles, and 5 functions - including electric locking. Use with wide stile devices, when a more substantial look is desired, or for retrofit where covering existing holes is important.

**Not compatible with 6400 narrow stile devices*



6T Thumb Latch - A grip pull with a thumb latch for 6300 or 6400 devices. Available in 4 functions.

**Not compatible with 6400C narrow stile devices.*



6P Pull Plate - Stainless Steel pull plate for 6300 device.

**Not compatible with 6400 narrow stile devices.*



6G Grip Pull - A grip pull for 6300 or 6400 devices. Made of stainless steel, this grip pull is available in 2 functions.



6S Rose Trim - Rose trim that fits into standard 161 prepped door with thru bolts. Works with 6300 rim, SVR and CVR devices. Available in 3 lever styles and in 4 functions.

**Not compatible with 6400 narrow stile devices*



6GW Grip Pull - A wide grip pull designed for 6300 exit devices. Available in 3 finishes and 3 functions.

**Not compatible with 6400 devices*



6C Cylinder only - Order this trim option for cylinder only, NightLatch (F03) Function. Includes rim cylinder or *IC rim housing, collar, and required mounting hardware.

**IC core sold separately*

Lever Styles

PHL



BSN



MIA



ORL



CHI



LAX



6300/6400 Exit Device Trim

How to Order

TRIM TYPE	LEVER	FINISH	CYLINDER TYPE	KEYWAY	KEYING
6N08	PHL	630	D	SCC	KD
Narrow Escutcheon	PHL – Philadelphia	605 – Bright Brass	D Default L Less Cylinder	SCC – Schlage C	KD – Keyed Different
6N01/6NM01 – Narrow, Blank (No lever)	BSN – Boston	606 – Satin Brass	SF6 Lock is SFIC prepped w/ 6 pin core	OTHERS – See Keyway Table Page	KA – Keyed Like
6N02/6NM02 – Narrow, Fixed Lever	MIA – Miami	613 – Dark Bronze	SF7 Lock is SFIC prepped w/ 7 pin core		K0 – Zero Bitted
6N03 – Narrow, Cylinder Only (No Lever) Night Latch	*CHI – Chicago	622 – Satin Black	SFL Lock is SFIC prepped but less core		MK – Master Keyed
6N08/6NM08 – Narrow, Classroom	*ORL – Orlando	625 – Bright Chrome	SFC Lock is SFIC prepped w/ construction core		CMK – Construction Master Keyed
6N09/6NM09 – Narrow Storeroom	*LAX – Los Angeles	626 – Satin Chrome	SFP Lock is SFIC prepped w/ plastic construction core		GMK – Grand Master Keyed
6N14/6NM14 – Narrow Passage	*Not available with S Trim	630 – Satin Stainless	LF6 Lock is Schlage LFIC prepped w/ Schlage core		
Wide Escutcheon			LFL Lock is Schlage LFIC prepped but less core		
6W02/6WM02 – Wide, Fixed Lever			LFC Lock is Schlage LFIC prepped w/ construction core		
6W08/6WM08 – Wide, Classroom			*Cores sold separately - option specifies factory installation		
6W09/6WM09 – Wide, Storeroom					
6W14/6WM14 – Wide, Passage					
6W99/6WM99 – Electrified					
Sectional/Rose					
6S02 – Sectional, Rigid Lever					
6S08 – Sectional, Classroom					
6S09 – Sectional, Storeroom					
6S14 – Sectional, Passage					
Thumb Latch					
6T05 – Thumb Latch, Classroom					
6T06 – Thumb Latch, Storeroom					
6T15 – Thumb Latch, Passage					
Pull Plate					
6P03 – Pull Plate, Cylinder					
Grip Pull					
6G02/6GM02 – Pull only					
6G03/6GM03 – Night Latch					
Cylinder Only					
6C03/6CM03 – Cylinder Only					

OPTIONS

TC - Tactile Abrasive Coating (Lever trims only)

AM - Anti-Microbial (Only available in 626 finish)

W - Weatherized (Only available in 626 finish)



6N

Narrow Escutcheon
01, 02, 03, 08, 09, 14



6W

Wide Escutcheon
02, 08, 09, 14, 95



6G

Grip Pull
02, 03



6GW

Wide Grip Pull
02, 03, M03



6T

Thumb Latch
02, 05, 06, 15



6P

Pull Plate
02, 03



6S

Sectional/Rose
02, 08, 09, 14



6C

Cylinder Only
03

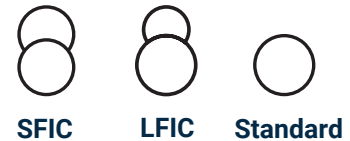
6N Escutcheon Trim



Features

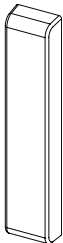
- Works with 6300 or 6400 device
- Uses standard 1-1/8" mortise cylinder
- Standard, SFIC, and other cylinders available
- 6 Available lever styles
- Finishes: 605, 606, 613, 622, 625, 626, 630
- Escutcheon Size - 1 - 13/16" x 9"
- ADA Compliant

6N Functions



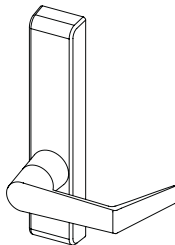
01 Blank

Blank Escutcheon



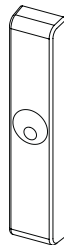
02 Pull Only

Entrance/Pull only when device is dogged. Fixed lever.



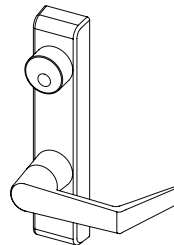
03 Night Latch

Entrance when latch retracted by key. Key removable only when locked.



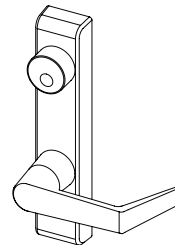
08 Classroom

Key locks or unlocks lever.



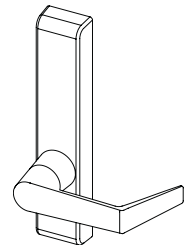
09 Storeroom

Entrance by lever when unlocked by key. Key removable only when locked.



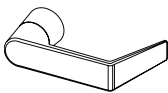
14 Passage

Entrance by lever, always unlocked.



6N Lever Styles

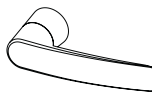
PHL



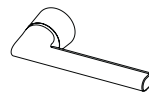
BSN



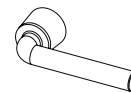
MIA



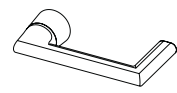
ORL



CHI



LAX



Applicable Devices

- 6400R Narrow Rim Device
- 6400V Narrow Surface Vertical Device
- 6400C Narrow Concealed Vertical Device
- 6300R Wide Stile Rim Device
- 6300V Wide Surface Vertical Device
- 6300C Wide Concealed Vertical Device
- 6300M Wide Mortise Device (Except 03 function)

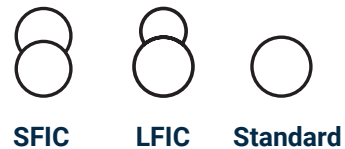
6W Escutcheon Trim



Features

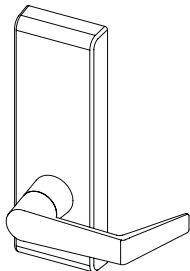
- Works only with 6300 wide device
- Uses standard 1-1/8" mortise cylinder
- Standard, SFIC, and other cylinders available
- 6 Available lever styles
- 08/09 Function conversion kit factory installed
- Finishes: 605, 606, 613, 622, 625, 626, 630
- Escutcheon Size - 3" x 9"
- ADA Compliant

6W Functions



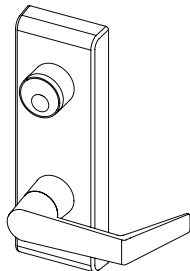
02 Pull Only

Entrance/Pull only when device is dogged. Fixed lever.



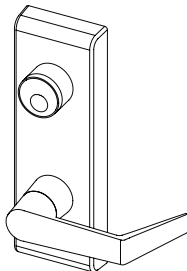
08 Classroom

Key locks or unlocks lever. Conversion kit included to convert locking function.



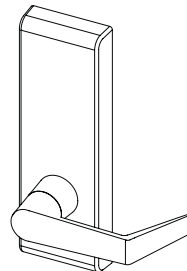
09 Storeroom

Entrance by lever when unlocked by key. Key removable only when locked.



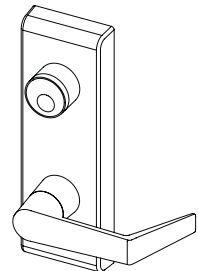
14 Passage

Entrance by lever, always unlocked.



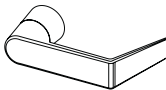
99 Electrified

Locked/Unlocked electronically. FS/FSF configurable. Entry by key. Key does not change lock state.



6W Lever Styles

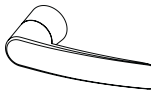
PHL



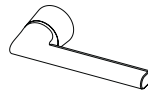
BSN



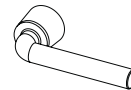
MIA



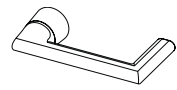
ORL



CHI



LAX



Applicable Devices

- 6300R Wide Stile Rim Device
- 6300V Wide Surface Vertical Device
- 6300C Wide Concealed Vertical Device
- 6300M Wide Mortise Device

6T Thumb Latch Escutcheon Trim



Features

- Works with 6300 or 6400 device
- Uses standard 1-1/8" mortise cylinder
- Standard, SFIC, and other cylinders available
- Finishes: 613, 622, 630
- Escutcheon Size - 1 - 13/16" x 9"



SFIC



LFIC

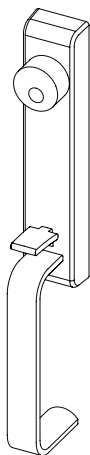


Standard

6T Functions

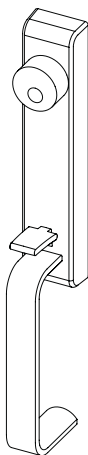
05 Classroom

Key locks or unlocks thumb piece.



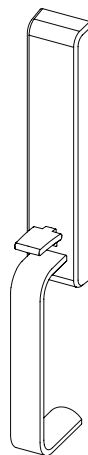
06 Storeroom

Entrance by thumb piece when released by key. Key removable only when locked.



15 Passage

Entrance by lever when unlocked by key. Key removable only when locked.



Applicable Devices

- 6300R Wide Stile Rim Device
- 6300V Wide Surface Vertical Device
- 6400R Narrow Rim Device
- 6400V Narrow Surface Vertical Device

6P Pull Plate Trim



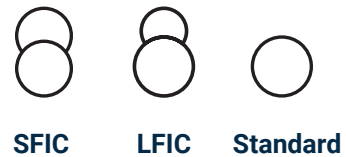
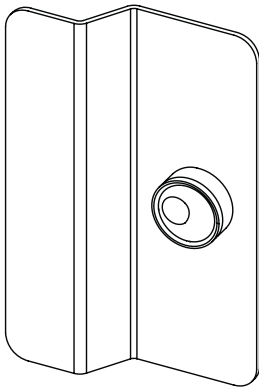
Features

- Works with 6300 only
- Uses standard rim cylinder
- Standard, SFIC, and other cylinders available
- Finishes: 613, 622, 630
- Escutcheon Size - 1 - 13/16" x 9"

6P Functions

03 Night Latch

Entrance when latch retracted by key. Key removable only when locked.



Applicable Devices

- 6300R Wide Stile Rim Device
- 6300V Wide Surface Vertical Device
- 6300C Wide Concealed Vertical Device

6G Grip Pull Trim



Features

- Works with 6300 or 6400 device
- Uses standard rim cylinder
- Standard, SFIC, and other cylinders available
- Finish: 613, 622, 630
- Escutcheon Size - 2" x 13"



SFIC



LFIC

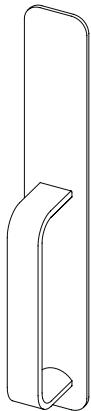


Standard

6G Functions

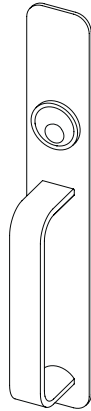
02 Pull Only

Entrance/Pull only when device is dogged.



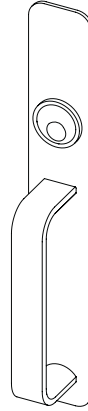
03 Night Latch

Entrance when latch retracted by key. Key removable only when locked.



M03 Mortise Night Latch

Entrance when latch retracted by key. Key removable only when locked.



Applicable Devices

- 6300R Wide Stile Rim Device
- 6300V Wide Surface Vertical Device
- 6300C Wide Concealed Vertical Device
- 6300M Wide Mortise Device (02 and 03 Function only)
- 6400R Narrow Rim Device
- 6400V Narrow Surface Vertical Device
- 6400C Narrow Concealed Vertical Device

6GW Grip Pull Trim



Features

- Works with 6300 device
- Uses standard rim cylinder
- Standard, SFIC, and other cylinders available
- Finish: 613, 622, 630
- Escutcheon Size - 2 5/8" x 13"



SFIC



LFIC

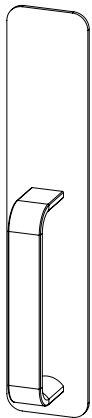


Standard

6GW Functions

02 Pull Only

Entrance/Pull only when device is dogged.



03 Night Latch

Entrance when latch retracted by key. Key removable only when locked.



M03 Mortise Night Latch

Entrance when latch retracted by key. Key removable only when locked.



Applicable Devices

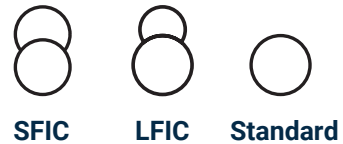
- 6300R Wide Stile Rim Device
- 6300V Wide Surface Vertical Device
- 6300C Wide Concealed Vertical Device
- 6300M Wide Mortise Device (02 and 03 Function only)

6S Rose Trim



Features

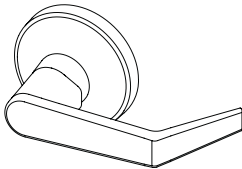
- Works only with 6300 device
- Uses standard KIK/IC cylinder
- Standard, SFIC, and other cylinders available
- 3 Available lever styles
- Finishes: 605, 606, 613, 622, 625, 626
- Rose Diameter - 3 - 3/8"
- ADA Compliant



6S Functions

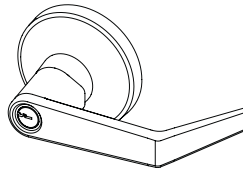
02 Pull Only

Entrance/Pull only when device is dogged. Lever is fixed.



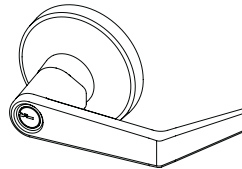
08 Classroom

Key locks or unlocks lever.



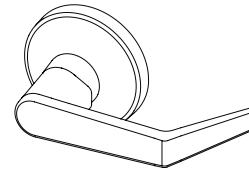
09 Storeroom

Entrance by lever when key inserted. Key removable only when locked.



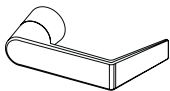
14 Passage

Entrance by lever. Always unlocked.



6S Lever Styles

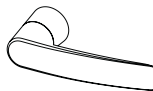
PHL



BSN



MIA



Applicable Devices

- 6300R Wide Stile Rim Device
- 6300V Wide Surface Vertical Device
- 6300C Wide Concealed Vertical Device

6C Cylinder Only

6C Cylinder Only



6C Cylinder Only - Order this trim option for cylinder only, Night Latch (F03) Function. Includes rim cylinder or *IC rim housing, collar, and required mounting hardware.

*IC core sold separately

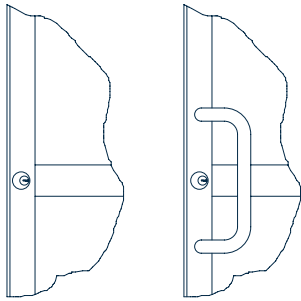
How to Order

Series	Function	Finish	Cylinder Type	Keying
6C	03	630	D	SCC
6C - Cylinder Only - 6300/6400 Device	03 - Night Latch (Rim) M03 - Night Latch (Mortise)	605 – Bright Brass	D Default	SCC – Schlage C
		606 – Satin Brass	L Less Cylinder	Others – See Keyway Table Page
		613 – Dark Bronze	SF6 - SFIC prepped w/ 6 pin core	
		622 – Satin Black	SF7 - SFIC prepped w/ 7 pin core	
		625 – Bright Chrome	SFL - SFIC prepped but less core	
		626 – Satin Chrome	SFC - SFIC prepped w/ construction core	
			SFP - SFIC prepped w/ plastic construction core	
			LF6 - Schlage LFIC prepped w/ Schlage core	
			LFL - Schlage LFIC prepped but less core	
			LFC - Schlage LFIC prepped w/ construction core	

6300/6400 Trim Compatibility

Narrow/Medium Stile Aluminum Door Applications

6400 Narrow Devices - 2-1/8" Stile Door

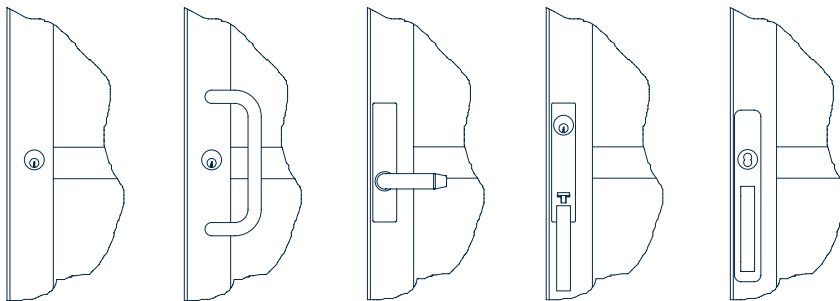


64C Cylinder Only
Functions: 03

6C4 Cylinder with 9E Pull
Functions: 03

Note: Pull for 6400 CVR
Device must be 10" CTC

6400 Narrow Devices - 3-1/2" Stile Door



64C Cylinder Only
Functions: 03

6C4 Cylinder with 9E Pull
Functions: 03

6N Escutcheon
Functions: 01, 02,
03, 08, 09, 14

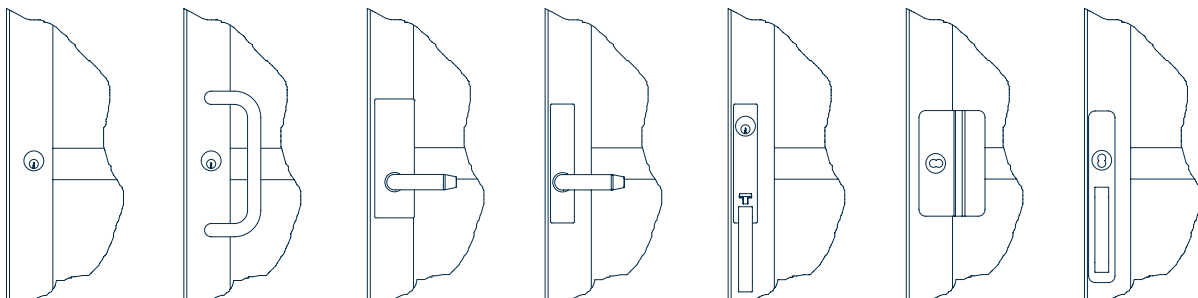
6T Escutcheon
Functions: 05, 06, 15

6G Pull
Functions: 02, 03

Note: Pull for 6400 CVR
Device must be offset from
device Centerline if other
than 10" CTC

Note: This trim does not
work on 6400 CVR Device
- lower thru bolt interferes

6300 Wide Devices - 3-1/2" Stile Door



64C Cylinder Only
Functions: 03

6C4 Cylinder with 9E Pull
Functions: 03

6W Escutcheon
Functions: 02, 08,
14, 99

6N Escutcheon
Functions: 01, 02,
03, 08, 09, 14

6T Escutcheon
Functions: 05, 06, 15

6P Pull
Functions: 02, 03

6G Pull
Functions: 02, 03

6300/6400 Trim Compatibility

Steel/Wood Door Applications

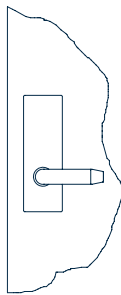
6300 Wide Devices - Steel/Wood Door



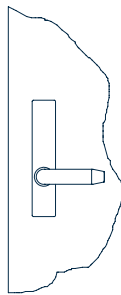
64C Cylinder Only
Functions: 03



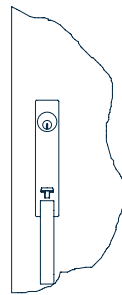
6C4 Cylinder with 9E Pull
Functions: 03



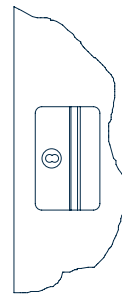
6W Escutcheon
Functions: 02, 08,
14, 99



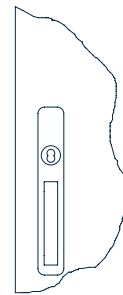
6N Escutcheon
Functions: 01, 02,
03, 08, 09, 14



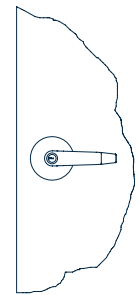
6T Escutcheon
Functions: 05, 06, 15



6P Pull
Functions: 02, 03



6G Pull
Functions: 02, 03
6G Wide coming 2024



6S Rose
Functions: 02, 08,
09, 14

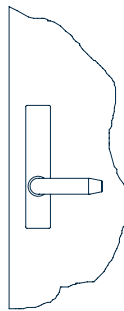
6400 Narrow Devices - Steel/Wood Door



64C Cylinder Only
Functions: 03



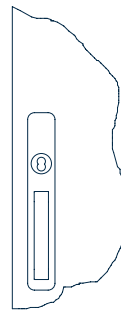
6C4 Cylinder with 9E Pull
Functions: 03



6N Escutcheon
Functions: 01, 02,
03, 08, 09, 14



6T Escutcheon
Functions: 05, 06, 15



6G Pull
Functions: 02, 03

Note: This trim does not
work on 6400 CVR Device
- lower thru bolt interferes

Electrified Options

Option	Description	DE	MLR	AL	SS	LM	ISMC
MLR	Motorized Latch Retraction				0	0	0
AL	Alarmed Exit					0 (1)	0
SS	Signal Switch on touch bar		0			0	0
LM	Latch bolt Monitoring	0 (2)	0	0	0		0
ISMC	Industry Standard Connector (Molex® Type)	0	0	0	0	0	

Not compatible
Cannot be combined

0= option
0 (1) = Standard on SVR/CVR
0 (2) = Cannot connect to an access control system

DE - Delayed Egress

Overview

Designed to slow the egress or exit from a particular area, usually for security reasons or to prevent unauthorized access. Commonly used where enhanced security measures are needed.

- **Armed:** When armed, this device activates an internal blocking mechanism to prevent exiting the door from the inside until the proper release sequence has been completed.
- **Release Delay:** When an attempt is made to open the door from the inside, the device sounds an alarm and initiates a countdown.
- **Free Exit:** Upon completion of the Release Delay countdown, the device will release the push bar and allow free exit from the door until it is reset. An alarm will continue to sound until the device is reset.
- **Fire Contacts:** The power supply for this device must be connected to a fire alarm to cut power to the device, allowing immediate egress in the event of an emergency

Electrical Specifications

- 24VDC +/-10%, 1A average inrush, 250mA continuous



MLR - Motorized Latch Retraction

Operation

When power is applied the MLR retracts the latch(es) allowing the door to be opened. Duration of latch retraction is controlled by the access control system. Power can be continuously applied to electronically dog the exit device.

Features

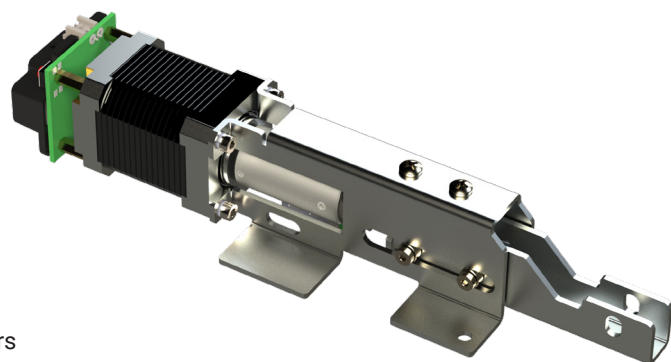
- Works with 6300 wide stile or 6400 narrow stile devices; panic or fire labeled
- Innovative motor drive retracts push pad
- Allows free egress at all times
- Suitable for pairing with Low Energy Power Operators

Electrical Specifications

- Input voltage 24 VDC \pm 10%
- Non-polarized power leads
- Latch Retraction Speed: ~300mS
- Average in-rush current: 900mA
- Average holding current: 200mA

Retrofit kit part number: 639026

- Designed to field retrofit 6300 or 6400 series devices
- Includes motor drive module, connectors and fasteners



Electrified Options

AL - Alarm Kit

ALHW - Alarm Kit

(Hardwire power & relay output)

Operation

Battery powered self-contained alarm kit for 6300 or 6400 exit device.

The alarm kit is armed via clockwise rotation of the key. If armed, a siren sounds, and the red LED rapidly flashes when the touch bar is depressed. Factory default is continuous alarm. Rotate key counterclockwise to silence siren and disarm the unit.

Alarm kit for panic devices include a third position for dogging the device.

Alarm Mode: Unit can be configured to auto silence the alarm after 7, 3 or 1 minute.

Armed State: Red LED blinks every 10-seconds to indicate unit is armed.

Low Battery: Siren will intermittently chirp when battery is low (<7VDC). Siren chirps regardless of arming state.

Battery Life: 1-year life expectancy in armed, unactuated state.

Siren Intensity: 95dB @ 4in

Operating Temperature: 0 °C – 49 °C

Max Relative Humidity: 85% (non-condensing)

Included Decal: "EMERGENCY EXIT ONLY – ALARM WILL SOUND"

Latchbolt Monitor: Standard for SVR device

Optional Rim Latchbolt Monitor: Adds latchbolt monitor. When armed, either the touch bar or latchbolt monitor actuate siren.

Optional Relay Output: Adds a Single Pole Double Throw (SPDT) relay and hardwire power input to the unit. When armed, relay state changes when the touch bar is depressed. Can be used with access control systems. Dry contact SPDT rated 125VAC/ 60VDC with 9VDC coil



Bar Length:

36" Device – 2" max cut

48" Device – 8" max cut

Electrical Specifications:

Power Requirements: One 9-VDC Alkaline Battery (included).

Optional (with relay output): 12-24VDC/VAC

±10% hardwired power. Battery can be used as emergency backup. It is protected from hardwired power.

Power Consumption:

Typical: 18µA

During alarming: 18mA

How to order: Specify AL for alarm kit or ALHW alarm kit with optional hardwire and relay output.

Panic rated device -

Position 1: On/Armed

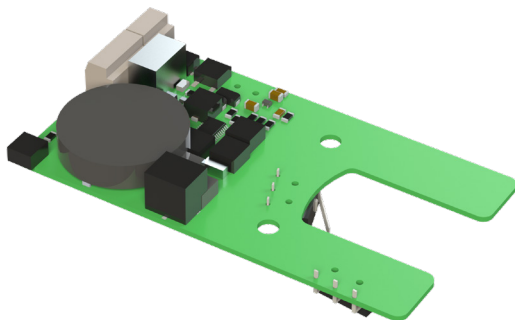
Position 2: Off

Position 3: Off & Dogged

Fire Rated Device -

Position 1: On/Armed

Position 2: Off



Electrified Options

6W 99 - Electrified Locking/Unlocking Trim

For ordering information see trim section



Operation

Field selectable operation - Fail Safe (Unlocked when power removed) or Fail Secure (Locked when power removed). Key allows entry but does not change state of lock.

Features

- Motorized locking/unlocking
- Field changeable from Fail Secure (Default) to Fail Safe
- AC or DC input voltage.
- Works with rim, surface vertical rod and concealed vertical rod devices.
- Two (2) year warranty
- Designed and assembled in the USA, Lancaster, PA.

Electrical Specifications

- Non-polarized power leads
- Power requirements: 12-24VDC/VAC \pm 10%
- Average in-rush current: 12-24VDC/VAC: 1A for 1 second
- Average holding current: 12-24VDC: 5mA after 30 seconds
12-24VAC: 15mA after 30 seconds
- Power must be applied for a minimum of 5 seconds

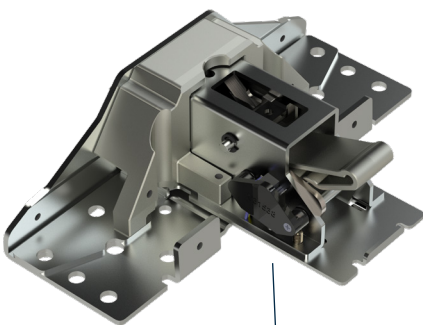
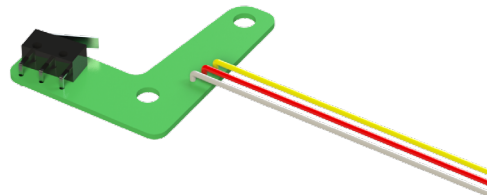
SS - Signal Switch/REX - Request to exit

Operation:

Monitors push bar operation. NO or NC operation.

Electrical Specifications:

Single Pull Double Throw (SPDT): 125VAC – 3A
30VDC – 3A



Latch bolt Monitor Switch

LM - Latch bolt Monitor Switch

Operation:

Monitors latch status. Available on Rim, SVR, CVR and Mortise. NO or NC operation.

Electrical Specifications:

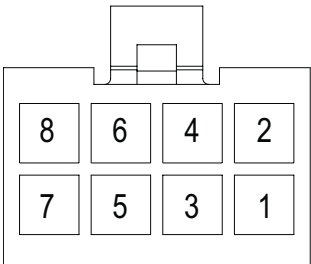
Single Pull Double Throw (SPDT): 125VAC – 3A
30VDC – 3A

Electrified Options

ISMC - Industry Standard Molex Connector

Operation:

Molex type connectors for simpler wiring



Terminal insertion end shown for ISMC connector (PDQ P/N 88850)

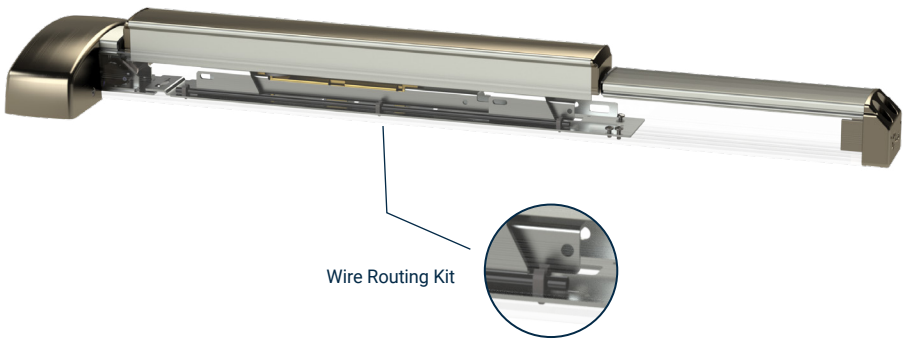
Function	Wire Color	Optional ISMC Pin#
Power*	White/Blue	1
Power*	White/Blue	2
REX(COM)	Yellow	3
REX(N/O)	Red	4
REX(N/C)	Gray	5
LM(COM)	Black	6
LM(N/O)	Brown	7
LM(N/C)	Blue	8

*Power wires are non-polar

Wire Routing Kit

Included with Latch bolt Monitor Switch, 6W99 Trim, and available as a kit.

Description: Safely route wires through device where they will not be pinched.



Cylinders and Keying


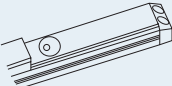
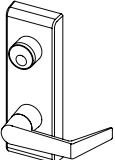
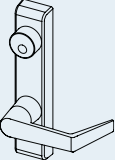

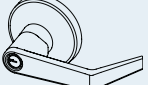



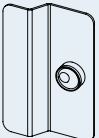
Keyways

Conventional Cylinder		Small Format Interchangeable Core		Large Format Interchangeable Core	
Keyway	PDQ Keyway Designator	Keyway (BEST Compatible)	PDQ Keyway Designator	Keyway (Schlage Compatible)	PDQ Keyway Designator
Schlage C (Default)	SCC	BEST A (Default), B, C, D, E, F, G, H, J, K, L, M, Q, R, WA, WB, WG, WH, TB, TD, TE, R	A (Default), B, C, D, E, F, G, H, J, K, L, M, Q, R, WA, WB, WG, WH, TB, TD, TE, R	Schlage C (Default)	SCC (Default)
PDQ Restricted	TA				
Arrow AR1	ARA				
Corbin 59A1	CO59A1				
Corbin 60	CO6				
Corbin L4	CL4				
Russwin D1	RUD	PDQ Exclusive	PDQ1		
Russwin 981	RUD981		PDQ2		
Schlage E	SCE	PDQ Exclusive and Restricted	PDQ3		
Schlage C	SCC				
Schlage C-K	SCC-K				
Sargent LA	SAL				
Sargent RA-RC	RA-RC				
Yale E1R	YA8				
Yale GA	GA				
Falcon E-R	FAL				
Kwikset	KW				

Keying

Description	PDQ Keying Designator
Keyed Different (Default)	KD
Keyed Alike	KA
"O" Zero Bitted	KO
Master Keyed	MK
Construction Master Keyed	CMK
Grand Master Keyed	GMK

Cylinder Application Chart

TRIM TYPE	FUNCTION	IMAGE	STANDARD CYLINDER	BEST SFIC	SCHLAGE STYLE LFIC
CYLINDER ONLY	03 (Less Outside Trim)		Rim cylinder (use rim cylinder included collar, mounting plate & screws)	SFIC Rim Housing (use rim housing included collar, mounting plate & screws)	LFIC Rim Housing (use rim housing included collar, mounting plate & screws)
CYLINDER DOGGING/ALARM KIT	All Devices		1-1/8" Mortise Cylinder 631093 Trim Ring Yale Cam	SFIC 7 pin housing (2) 631093 Trim Rings Yale Cam	LFIC housing 631094 Collar (5/8") Yale Cam
6W	All Keyed Functions		1-1/8" Mortise Cylinder 631094 Collar (5/8") Corbin A06 or Yale Cam	SFIC 7 pin housing 631094 Collar Flipped (3/4") 631093 Trim Ring Corbin A06 or Yale Cam	LFIC housing 631094 Collar Flipped (3/4") 631093 Trim Ring Corbin A06 or Yale Cam
6N	08, 09		1-1/8" Mortise Cylinder 631094 Collar (5/8") Corbin A06 or Yale Cam	SFIC 7 pin housing 631094 Collar Flipped (3/4") 631093 Trim Ring Corbin A06 or Yale Cam	LFIC housing 631094 Collar Flipped (3/4") 631093 Trim Ring Corbin A06 or Yale Cam
6N	03		Rim Cylinder	SFIC rim housing	LFIC rim housing
6S	All Keyed Functions		Must order product with KIK / Standard cylinder lever	Must order product with SFIC lever	Must order product with Schlage style LFIC Lever
6T	All Keyed Functions		1-1/8" Mortise Cylinder 631094 Collar (5/8") Corbin A06 or Yale Cam	SFIC 7 pin housing 631094 Collar Flipped (3/4") 631093 Trim Ring Corbin A06 or Yale Cam	LFIC housing 631094 Collar Flipped (3/4") 631093 Trim Ring Corbin A06 or Yale Cam
6G	All Keyed Functions		Rim Cylinder Standard rim cylinder trim ring	SFIC rim housing Standard rim cylinder trim ring	LFIC rim housing Standard rim cylinder trim ring
6GW	All Keyed Functions		Rim Cylinder Standard rim cylinder trim ring	SFIC rim housing Standard rim cylinder trim ring	LFIC rim housing Standard rim cylinder trim ring
6P	All Keyed Functions		Rim Cylinder Standard rim cylinder trim ring	SFIC rim housing Standard rim cylinder trim ring	LFIC rim housing Standard rim cylinder trim ring

Mullion

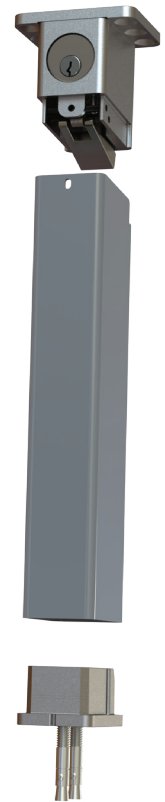
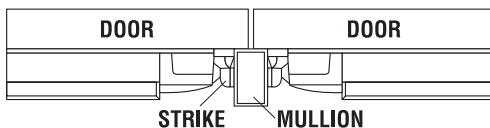
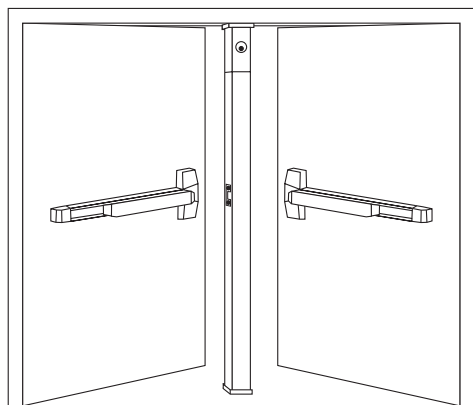
9300 Mullion

The PDQ 9300 Series removable mullions are designed for use with the 6300/6400 Series Rim Exit Devices on pairs of doors. They are designed for quick removal from the top bracket by simple operation of the rim cylinder when a clear, unobstructed large opening is required. Once the mullion is removed, carts, gurneys, large machinery and the like can freely pass through the opening. When the mullion is re-installed, the unit will self lock in place without a key.

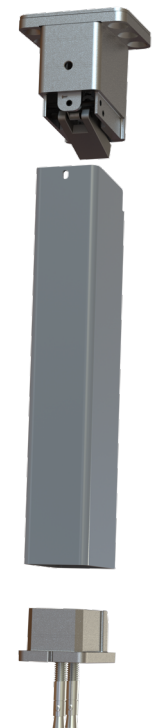
Specifications

Mullion Head/Foot brackets:	• Cast Stainless Steel
Tube Dimensions:	• Powder Coated 2" x 3" Steel - 3/16" Wall
Strike:	• 639080 Strike included for Fire Labeled • Strike not included for panic mullion. Use supplied strike with exit device.
Size:	• 8' or 10' lengths - Can easily be cut to shorter size in field
Finish:	• Powder Coated 689 (Aluminum) - can be painted
Electrified Options:	• Wire routing w/ plugs
Warranty:	• One (1) year limited warranty
Certifications: Compliances: Listings:	• Fire model is 3 hour fire labeled for pairs up to and including 8' x 8' (With 6300RF/6400RF Rim Device) • Meets requirements of the BAA as a COTS product manufactured in the United States

Orientation



Key Removable



Non-Keyed Removable

9300 Mullion

How to order

DEVICE TYPE	FOR DOOR HEIGHT	REMOVABLE TYPE	RATING	OPTIONS	KEYING
93	0	0	—	—	
93 - Mullion	0 - 8' and under Door 1 - 10' and under Door	0 - Key Removable 1 - Non-Keyed Removable	Blank - Non Fire Rated F - Fire Rated (8' Max)	EM - Electrified Mullion	See Below

Key Removable Only

CYLINDER TYPE	KEYWAY	KEYING
D	SCC	KD
D Default L Less Cylinder SF6 Lock is SFIC prepped w/ 6 pin core SF7 Lock is SFIC prepped w/ 7 pin core SFL Lock is SFIC prepped but less core SFC Lock is SFIC prepped w/ construction core SFP Lock is SFIC prepped w/ plastic construction core LF6 Lock is Schlage LFIC prepped w/ Schlage core LFL Lock is Schlage LFIC prepped but less core LFC Lock is Schlage LFIC prepped w/ construction core	SCC – Schlage C OTHERS AVAILABLE	KD – Keyed Different KA – Keyed Like KO - Zero Bitted MK – Master Keyed CMK – Construction Keyed GMK – Grand Master Keyed


639081 - Mullion Storage Kit

Kit includes items necessary to mount/store mullion on the wall when not in use



Fire Ratings

6300RF / 6400RF Rim Devices

		RATING	MAX OPENING	APPLICATION
	Single Door	3 Hour Rated	4' x 10' Door	
	Double Door with Mullion	3 Hour Rated	8' x 8' Pair	Single Egress Pairs (Swing Same Direction)


6300VF / 6400VF Surface Vertical Devices

		RATING	MAX OPENING	APPLICATION
	Double Door Top/Btm Latches or Less Bottom Rod (LBR)	3 Hour Rated	8' x 10' Top/Btm Latches 8' x 8' Less Bottom Rod	Single Egress Pairs (Swing Same Direction)
	Double Door Top/Btm Latches or Less Bottom Rod (LBR)	3 Hour Rated	8' x 10' Top/Btm Latches 8' x 8' Less Bottom Rod	Double Egress Pairs (Swing Opposite Directions)

6300CF / 6400CF Concealed Vertical Devices

		RATING	MAX OPENING	APPLICATION
	Double Door Top/Btm Latches or Less Bottom Rod (LBR)	3 Hour Rated	8' x 8' Pair	Single Egress Pairs (Swing Same Direction)
	Double Door Top/Btm Latches or Less Bottom Rod (LBR)	3 Hour Rated	8' x 8' Pair	Double Egress Pairs (Swing Opposite Direc- tions)

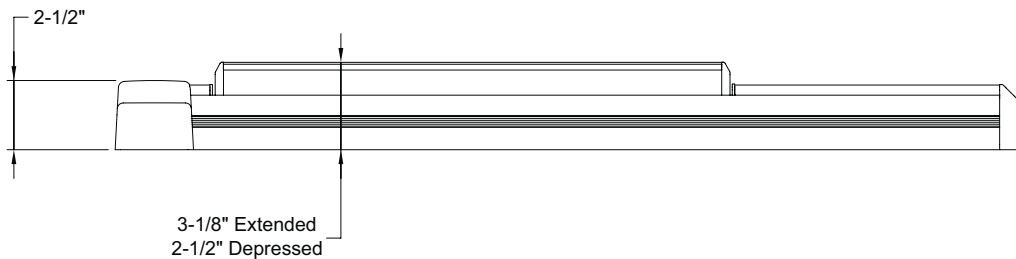
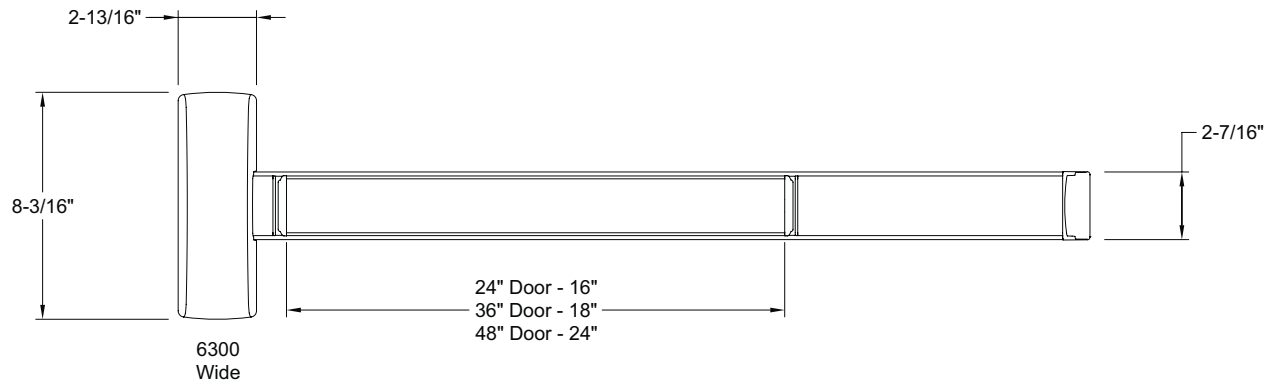
6300MF Mortise Devices

		RATING	MAX OPENING	APPLICATION
	Single Door	90 Minute Rated	4' x 8' Door	

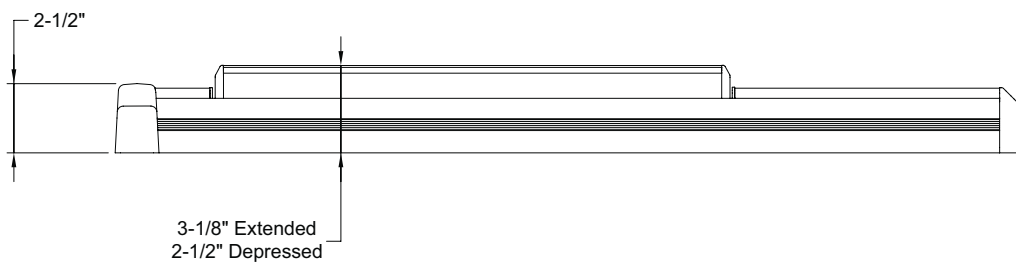
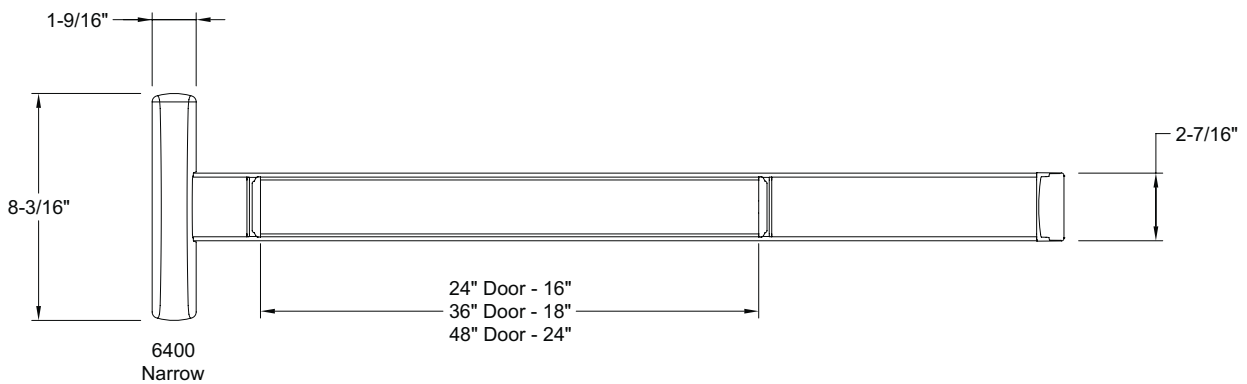
6300/6400

Device Dimensions

6300 Series Wide Stile

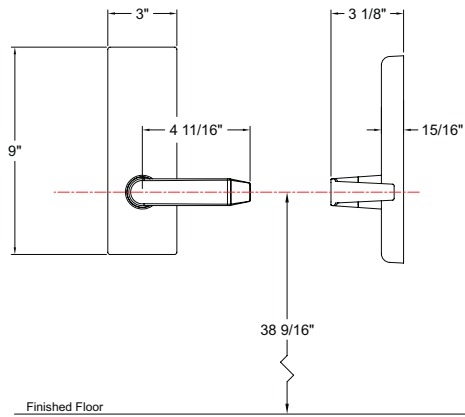


6400 Series Narrow Stile

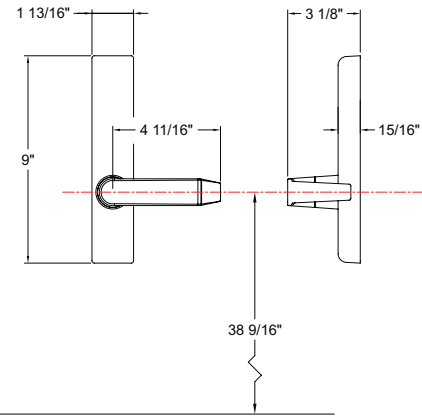


Trim Dimensions

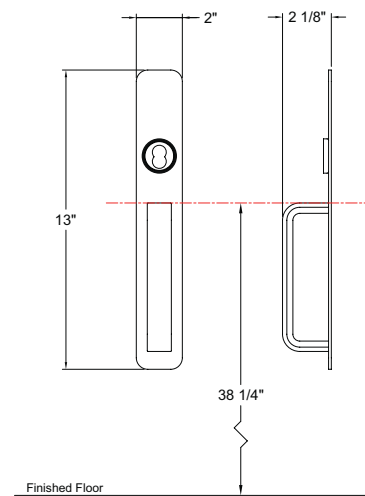
6W Escutcheon



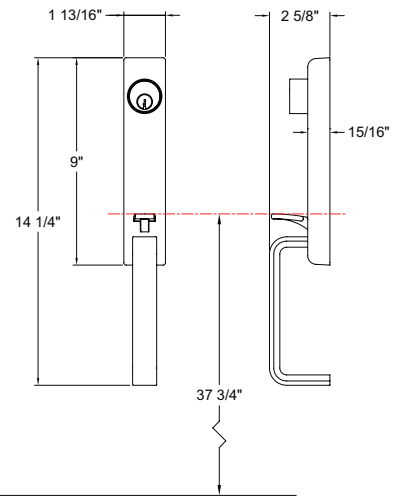
6N Escutcheon



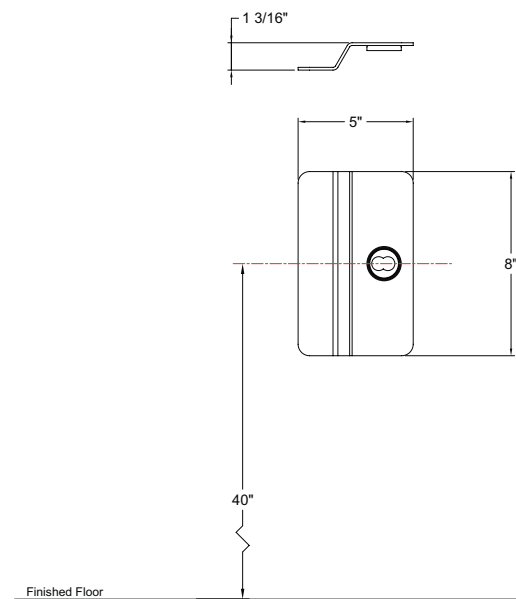
6G Pull



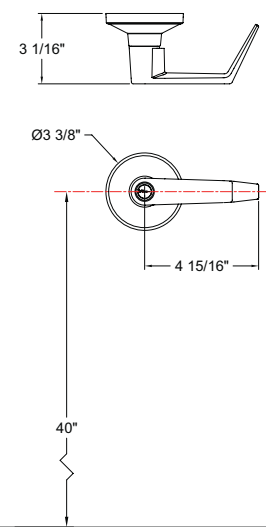
6T Thumb Latch



6P Pull



6S Sectional



Door Width Chart/Cross Reference

6300/6400 Series Door Width Chart

PART	DESCRIPTION	FOR DOOR	MAX CUT ^{1,2}
6300R-CD	6300 Rim Cylinder dogging	36"	6"
6300R	6300 Rim Hex Key dogging	36"	6"
6300RF	6300 Rim Fire	36"	8"
6301V	6300 SVR Cylinder dogging	36"	6"
6300V	6300 SVR Hex Key dogging	36"	6"
6300VF	6300 SVR Fire	36"	8"
6300C	6300 CVR Hex Key dogging	36"	6"
6300CF	6300 CVR Fire	36"	8"
6311R	6300 Rim Cylinder dogging	48"	12"
6310R	6300 Rim Hex Key dogging	48"	12"
6310RF	6300 Rim Fire	48"	14"
6311V	6300 SVR Cylinder dogging	48"	12"
6310V	6300 SVR Hex Key dogging	48"	12"
6310VF	6300 SVR Fire	48"	14"

1: For the MLR Motorized Latch Retraction option: 3 ft devices, maximum cut is 3". 4 ft devices, maximum cut is 9".

2: For the Alarm option: 3 ft devices, maximum cut is 2". 4 ft devices, maximum cut is 8".

3: DE = no cut.

24" DEVICE

No cut

No electric options

6300 Wide Stile Cross Reference

MANUFACTURER	EXIT DEVICE SERIES/TYPE							
	RIM	RIM FIRE	VERTICAL ROD	VERTICAL ROD FIRE	CONCEALED VERTICAL ROD	CONCEALED VERTICAL ROD FIRE	MORTISE	MORTISE FIRE
PDQ	6300R	6300RF	6300V	6300VF	6300C	6300CF	6300M	6300MF
CORBIN	ED5200	ED5200A	ED5400	ED5400A	ED5860	ED5860B	ED5600	ED5600A
DORMA	9300	F9300	9400	F9400	9100	F9100	9500	F9500
FALCON	25-R	F-25-R	25-V	F-25-V	25-C	F-25-C	25-M	F-25-M
HAGER	4501 RIM	4501 RIM FR	4501 SVR	4501 SVR FR	4500 CVR	4500 CVR FR	4500 MOR	4500 MOR FR
SARGENT®	8800	12-8800	8700	12-8700	8600	12-8600	8900	12-8900
VON DUPRIN	98/99	98/99-F	98/9927	98/9927-F	98/9947	98/9947-F	98/9975	98/9975-F
YALE	7100	7100F	7110	7110F	7160	7160F	7130	7130F

6400 Narrow Stile Cross Reference

MANUFACTURER	EXIT DEVICE SERIES/TYPE					
	RIM	RIM FIRE	VERTICAL ROD	VERTICAL ROD FIRE	CONCEALED VERTICAL ROD	CONCEALED VERTICAL ROD FIRE
PDQ	6400R	6400RF	6400V	6400VF	6400C	6400CF
CORBIN	ED4200	ED4200MA	ED4400	ED4400MA	ED4800	ED4800MA
DORMA	9700	F9700	9800	F9800	9600	F9600
FALCON	24-R	F-24-R	24-V	F-24-V	24-C	F-24-C
HAGER	4601 RIM	4601 RIM FR	4601 SVR	4601 SVR FR	4601 CVR	4601 CVR FR
SARGENT®	8500	12-8500	N/A	N/A	8400	12-8400
VON DUPRIN	33A/35A	33A/35A-F	3327A/3527A	3327A/3527A-F	3347A/3547A	3347A/3547A-F
YALE	7200	7200F	7210	7210F	7220	7220F

Lever Options

PHL



BSN



MIA



ORL



CHI



LAX



Not all products are available in levers shown.

Finish Options

605

Bright Brass

Gold anodized aluminum rail (matte), push bar sides and dogging filler Polished brass plated cast head cover and end caps. Polished brass plated heavy gauge stamped push bar face.

606

Satin Brass

Gold anodized aluminum rail (matte), push bar sides and dogging filler Brushed brass plated cast head cover and end caps. Brushed brass plated heavy gauge stamped push bar face.

613

Dark Bronze

Dark bronze anodized aluminum rail, push bar sides and dogging filler Powder coated cast head cover and end caps. Powder coated heavy gauge stamped push bar face.

622

Flat Black

Black anodized aluminum rail, push bar sides and dogging filler Powder coated cast head cover and end caps. Powder coated heavy gauge stamped push bar face

625

Bright Chrome

Clear anodized aluminum rail (matte), push bar sides and dogging filler Polished chrome plated cast head cover and end caps. Polished chrome plated heavy gauge stamped push bar face.

626

Satin Chrome

Clear anodized aluminum rail (matte), push bar sides and dogging filler Brushed chrome plated cast head cover and end caps. Brushed chrome plated heavy gauge stamped push bar face.

630

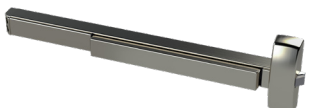
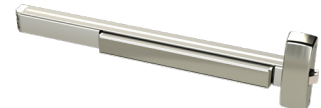
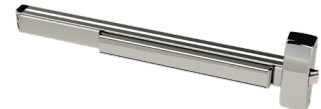
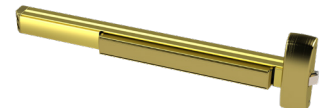
Satin Stainless

Clear anodized aluminum rail (matte), push bar sides and dogging filler Plated (stainless look) cast head cover and end caps. Brushed stainless heavy gauge stamped push bar face.

630F

Full Satin Stainless

Brushed stainless fully clad rail, push bar and dogging filler Plated (stainless look) cast head cover and end caps.



Finish designation does not specify base material, only color and appearance. Not all products are available in all finishes listed.



SECURING CONFIDENCE OPENING POSSIBILITIES

Phone: 717.656.4281

Tech Support: 833.273.7832

Email: help@pdqlocks.com

Headquarters: 2230 Embassy Drive, Lancaster, PA 17603 |
P.O. Box 6426, Lancaster, PA 17607

Regional Distribution Centers: Lancaster, PA | Norcross, GA |
Auburn, WA

pdqlocks.com

LT 2097 7-2024

©PDQ Industries 2022