



# Flush Bolts, Coordinators

Surface Bolts, and Coordinators



# Flush Bolts Surface Bolts Coordinators

## Table of Contents

---

Flush Bolts .....	<b>3-6</b>
Cross Reference Table, Flush Bolts .....	<b>7</b>
Surface Bolts .....	<b>8</b>
Coordinators .....	<b>9</b>
Cross Reference Tables, Coordinators .....	<b>11</b>
Finishes .....	<b>12</b>

---

# Flush Bolts

## 93170 Series Manual Flush Bolts For Hollow Metal Doors



### FEATURES:

- Compatible with ANSI/BHMA 156.115 door and frame prep
- 3/4" slide bolt throw, 3/4" backset.
- 12" rod length (center of face to bolt end - retracted).
- 1-1/2" adjustable slide bolt.
- PDQ # 909 Dust Proof Strike recommended to prevent dirt from accumulating and clogging the bottom strike (ordered separately)

### SPECIFICATIONS:

**BASE MATERIAL:** • Brass and steel

**FASTENERS:** • 16 ea. #8 x 3/4" FH combo screws.

**FACE PLATE:** • 1" x 6-3/4"

**STRIKE:** • 15/16" x 2-1/4"

**GUIDE:** • 1" x 2",

**FINISHES:** • 605 (US3) Bright Brass, 613 (US10B) Oil Rubbed Bronze, 626 (US26D) Satin Chrome

### CERTIFICATIONS,

**LISTINGS,** • UL/CUL listed for metal swing doors, 4'x8', 3 hrs

**COMPLIANCES:** • Complies with ANSI/BHMA A156.16, Type L04251



## 93270 Series Manual Flush Bolts For Composite Wood Doors



### FEATURES:

- Compatible with ANSI/BHMA 156.116W.
- Corner reinforcing plate.
- 3/4" slide bolt throw, 3/4" backset.
- 12" rod length (center of face to bolt end - retracted).
- 1-1/2" adjustable slide bolt.
- PDQ # 909 Dust Proof Strike recommended to prevent dirt from accumulating and clogging the bottom strike (ordered separately)

### SPECIFICATIONS:

**BASE MATERIAL:** • Brass and Steel

**FASTENERS:** • 7 ea. #8 x 3/4" FH combo screws, 2 ea. #8-32 x 1/4" FH MS.

**FACE PLATE:** • 1" x 6-3/4"

**STRIKE:** • 15/16" x 2-1/4"

**GUIDE:** • 1" x 2",

**FINISHES:** • 605 (US3) Bright Brass, 613 (US10B) Oil Rubbed Bronze, 626 (US26D) Satin Chrome

### CERTIFICATIONS,

**LISTINGS,** • UL/CUL listed for hollow composite wood swing doors, 4'x8', 1-1/2 hrs

**COMPLIANCES:** • Complies with ANSI/BHMA156.16, Type L04261



## 93101 Series Automatic Flush Bolts For Hollow Metal Doors



### FEATURES:

- Easy closing force.
- Non-handed.
- Fully automatic— opening active door retracts top and bottom bolts.
- Override feature prevents damage to doors or bolts if bolt heads are blocked from entering strikes.
- Rods are adjustable up to 1-1/2".
- Fusible link automatically locks the inactive door under high heat conditions due to fire
- PDQ # 909 Dust Proof Strike recommended to prevent dirt from accumulating and clogging the bottom strike (ordered separately)

### SPECIFICATIONS:

**BASE MATERIAL:** • Brass and Steel

**FASTENERS:** • 16 ea. #8 x 3/4" FH combo screws, 4 ea. #8-32 x 3/8" FH MS.

**FINISHES:** • 605 (US3) Bright Brass, 613 (US10B) Oil Rubbed Bronze, 626 (US26D) Satin Chrome

### CERTIFICATIONS,

**LISTINGS,** • UL/CUL 10C listed for hollow labeled hollow metal swing doors, 4' x 8', 3-1/2 hrs

**COMPLIANCES:** • Complies with ANSI/BHMA156.3, Type 25



## 93102 Series Self-latching Automatic Flush Bolts For Hollow Metal Doors



### FEATURES:

- Easy closing force.
- Top bolt automatically engages when the inactive door closes. Bottom latch on the inactive door automatically engages when the active door is closed. When the active door is opened, the bottom latch on the inactive door automatically retracts. The inactive door stays latched at the top until the top bolt is retracted by depressing the release button on the bolt face.
- Non-handed.
- Override feature prevents damage to doors or bolts if bolt heads are blocked from entering strikes.
- Bolt head rod is adjustable up to 1-1/2".
- Fusible link automatically locks the inactive door under high heat conditions due to fire
- PDQ # 909 Dust Proof Strike recommended to prevent dirt from accumulating and clogging the bottom strike (ordered separately)

### SPECIFICATIONS:

**BASE MATERIAL:** • Brass and Steel

**FASTENERS:** • 16 ea. #8 x 3/4" FH combo screws, 4 ea. #8-32 x 3/8" FH MS.

**FINISHES:** • 605 (US3) Bright Brass, 613 (US10B) Oil Rubbed Bronze, 626 (US26D) Satin Chrome

### CERTIFICATIONS,

**LISTINGS,** • UL/CUL 10C listed for hollow labeled hollow metal swing doors, 4' x 8', 3-1/2 hrs

**COMPLIANCES:** • Complies with ANSI/BHMA A156.16 Type 27 (Formerly included in A156.3)



## 93103 Series Automatic Flush Bolt with Bottom Fire Bolt for Hollow Metal Doors



### FEATURES:

- Low (5lbs maximum) closing force.
- Fully automatic—opening active door retracts top bolt.
- Override feature prevents damage to doors or bolt if bolt head is blocked from entering strike.
- Bolt head rod is adjustable up to 1-1/2".
- Includes PDQ #629030 Fire Bolt automatically locks the inactive door under high heat conditions due to fire.
- Bottom fire bolt eliminates need for floor prep.

### SPECIFICATIONS:

<b>BASE MATERIAL:</b>	• Brass and Steel
<b>FASTENERS:</b>	• 8 ea. #8 x 3/4" FH combo screws, 2 ea. #8-32 x 3/8" FHMS, 4 ea. 10-32 x 13/16" FH MS (for Fire Bolt).
<b>FINISHES:</b>	• 605 (US3) Bright Brass, 613 (US10B) Oil Rubbed Bronze, 626 (US26D) Satin Chrome
<b>CERTIFICATIONS, LISTINGS, COMPLIANCES:</b>	• UL/CUL 10C listed for hollow labeled hollow metal swing doors, 4' x 8', 1-1/2 hrs • Complies with ANSI/BHMA 156.16, Type L04021.



## 93201 Series Automatic Flush Bolts For Composite Wood Doors



### FEATURES:

- Easy Closing Force
- Non-handed.
- Fully automatic — opening active door retracts top and bottom bolts.
- Override feature prevents damage to doors or bolts if bolt heads are blocked from entering strikes.
- Bolt head rods are adjustable up to 1/2".
- Fusible link automatically locks the inactive door under high heat conditions due to fire
- PDQ # 909 Dust Proof Strike recommended to prevent dirt from accumulating and clogging the bottom strike (ordered separately)

### SPECIFICATIONS:

<b>BASE MATERIAL:</b>	• Brass and Steel
<b>FASTENERS:</b>	• 12 ea. #8 x 3/4" FH combo screws • 6 ea. #10 x 1" FH WS. • 4 ea. #8 - 32 x 1/4" FH undercut FH MS.
<b>FINISHES:</b>	• 605 (US3) Bright Brass, 613 (US10B) Oil Rubbed Bronze, 626 (US26D) Satin Chrome
<b>CERTIFICATIONS, LISTINGS, COMPLIANCES:</b>	• UL/CUL 10C listed for hollow labeled composite wood swing doors, 4' x 8', 1-1/2 hrs • Complies with ANSI/BHMA A156.16 Type 27 (Formerly included in A156.3)



## 93202 Series Self-latching Automatic Flush Bolts For Composite Wood Doors



### FEATURES:

- Easy closing force
- Top bolt automatically engages when the inactive door closes. Bottom latch on the inactive door automatically engages when the active door is closed. When the active door is opened, the bottom latch on the inactive door automatically retracts. The inactive door stays latched at the top until the top bolt is released by pressing the release button on the bolt face.
- Non-handed.
- Override feature prevents damage to door or bolt if bolt head is blocked from entering strike.
- Rod is adjustable up to 1/2".
- PDQ # 909 Dust Proof Strike recommended to prevent dirt from accumulating and clogging the bottom strike (ordered separately)

### SPECIFICATIONS:

#### BASE MATERIAL:

- Brass and Steel

#### FASTENERS:

- 12 ea. #8 x 3/4" FH combo screws.
- 4 ea. #8 - 32 x 1/4" FH MS.
- 6 ea. #10 x 1" FH WS.

#### FINISHES:

- 605 (US3) Bright Brass, 613 (US10B) Oil Rubbed Bronze, 626 (US26D) Satin Chrome

#### CERTIFICATIONS,

#### LISTINGS,

- UL/CUL 10C listed for hollow labeled composite wood swing doors, 4' x 8', 1-1/2 hrs

#### COMPLIANCES:

- Complies with ANSI/BHMA A156.16 Type 27 (Formerly included in A156.3)

Release Button



## 93203 Series Automatic Flush Bolt with Bottom Fire Bolt for Wood Composite Doors



### FEATURES:

- Low (5 lbs. maximum) closing force.
- Fully automatic—opening active door retracts top bolt.
- Override feature prevents damage to doors or bolt if bolt head is blocked from entering strike.
- Bolt head rod is adjustable up to 1/2".
- Includes PDQ #629030 Fire Bolt automatically locks the inactive door under high heat conditions due to fire.
- Bottom fire bolt eliminates need for floor prep.
- Oversize fire bolt strike hole allows for slight door misalignment.

### SPECIFICATIONS:

#### BASE MATERIAL:

- Brass and Steel

#### FASTENERS:

- 6 ea. #8 x 3/4" FH combo screws, 2 ea. 8-32 x 1/4" FH MS, 3 ea. #10 x 1" FH WS, 4 ea. #8 x 3/4" WS (for Fire Bolt).

#### FINISHES:

- 605 (US3) Bright Brass, 613 (US10B) Oil Rubbed Bronze, 626 (US26D) Satin Chrome

#### CERTIFICATIONS,

#### LISTINGS,

- UL/CUL 10C listed for hollow labeled composite wood swing doors, 4' x 8', 20 min

#### COMPLIANCES:

- Complies with ANSI/BHMA156.3, Type 25



## 909 Series Dust Proof Strike

### FEATURES:

- Works with all PDQ manual and automatic flush bolts.
- Removable face plate for use with thresholds.
- Adjustable height for carpeted areas.

### SPECIFICATIONS:

#### BASE MATERIAL:

- Brass

#### FASTENERS:

- Adjustment nut for threshold applications.
- Spanner wrench.
- 2 ea. #8 x 1-3/8" FH PS SMS.
- 2 ea. plastic anchors.

#### FINISHES:

- 605 (US3) Bright Brass, 613 (US10B) Oil Rubbed Bronze, 626 (US26D) Satin Chrome

#### BARREL:

- 15/16" outer diameter x 2" Depth

#### CERTIFICATIONS,

#### LISTINGS,

#### COMPLIANCES:

- Complies with ANSI/BHMA156.16, Type L04021



## How To Order

SERIES	FINISH
93101	626
93101 93102 93103 93201 93202 93203	605 — Bright Brass 613 — Oil Rubbed Bronze 626 — Satin Chrome

Ordering Example: 93101 626

## Cross Reference

	PDQ	ABH	DCI	HAGER	IVES	ROCKWOOD	TRIMCO
DOOR TYPE	MANUAL FLUSH BOLTS						
HOLLOW METAL	93170	1855S	780F	282D	FB458	555	3917-12
COMPOSITE WOOD	93270	1875S	790F	283D	FB358	557	3913
DOOR TYPE	AUTOMATIC FLUSH BOLTS						
HOLLOW METAL	93101	1860P	842	292D	FB31P	2842	3810x3810
	93102	—	845	293D	FB51P	2845	3820x3810
	93103	—	805/8BFB	295M	FB52	2848	3820x3850
COMPOSITE WOOD	93201	1862P	942	291D	FB41P	2942	3815x3815L
	93202	—	945	293D	FB61P	2945	3825x3815L
	93203	—	960/9BFB	295W	FB42	2948	3815x3850

## Accessories

### 629030 Universal Bottom Fire Bolt For Metal And Composite Wood Doors

#### FEATURES:

- Designed for use with all PDQ manual and automatic flush bolts.
- For fire labeled doors, must be used with PDQ UL fire listed automatic flush bolts to maintain UL listing status and fire code compliance.
- For use in door only.

#### SPECIFICATIONS:

**BASE MATERIAL:** • Stainless Steel

**FINISHES:** • 630 (US32D)

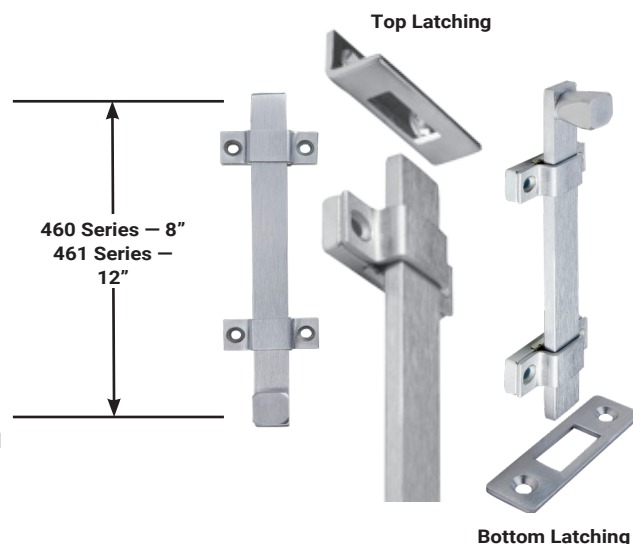


# Surface Bolts

## 460/461 Series Surface Bolts

### SPECIFICATIONS:

- MATERIAL:** • Steel.
- MOUNTING FASTENERS:** • 8 ea. #8 x 1-1/4" FH SMS.
- STRIKES:** • 1ea. universal top strike, 1ea. mortise bottom strike.
- FINISHES:** • 626 (US26D) Satin Chrome
- CERTIFICATIONS, LISTINGS, COMPLIANCES:** • Complies with ANSI/BHMA156.16, Type L04151

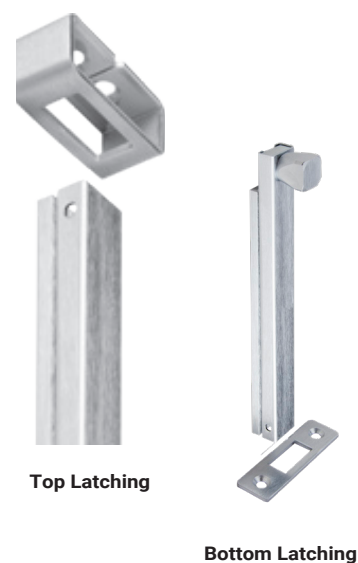


## 462 Series Surface Bolt, Concealed Mounting

- Suitable for all types of doors.
- Fully concealed mounting helps guard against vandalism.

### SPECIFICATIONS:

- DIMENSIONS:**
  - Body: 7/8" W x 8" L x 7/8" D.
  - Actuating Knob Projection: 1-1/2"
  - Top Strike: 2-1/4" W x 1" H x 15/16" D.
  - Bottom Strike: 3-3/8" W x 1" H x 1/8" Thick
  - Steel.
- MATERIAL:** • Steel.
- SURFACE BOLT THROW:** • 1".
- MOUNTING FASTENERS:** • 5 ea. #12 x 1-1/4" FH PH SMS, 5 ea. 12-24 x 1" FH PH MS, 2 ea. plastic anchors.
- STRIKES:** • 1ea. universal top strike, 1ea. mortise bottom strike.
- FINISHES:** • 626 (US26D) Satin Chrome
- CERTIFICATIONS, LISTINGS, COMPLIANCES:** • Complies with ANSI/BHMA156.16, Type L04151



## How To Order

SERIES	FINISH
460	626
462 – Surface Bolt, Concealed Mounting 461 – Surface Bolt, 12" 460 – Surface Bolt, 8"	626 – Satin Chrome

Ordering Example: 460 626



# Coordinators

## COR Series Coordinator, ANSI Type 21A

### FEATURES:

- Non-handed.
- Override protection to prevent damage in case of abnormal force on door
- Mechanism and filler bar completely fill width of opening
- Suitable for painting to match door and frame finish



## Specifications

<b>BASE MATERIAL:</b>	• Steel
<b>FASTENERS:</b>	• 8 Ea. 12-24 x 1-1/4 PH MS. • 6 Ea. #8 x 3/4" Combo Screws. • Strike Plates.
<b>FINISHES:</b>	• 600 (USP) primer
<b>COORDINATOR SIZES:</b>	• COR42: 1-5/8W" x 5/8"H x 42L" • COR52: 1-5/8W" x 5/8"H x 52L" • COR60: 1-5/8W" x 5/8"H x 60L"
<b>CERTIFICATIONS, LISTINGS, COMPLIANCES:</b>	• UL listed for 3 hours for use with a pair of swing doors incorporating an astragal • Complies with ANSI/BHMA156.3 Type 21A • TAA compliant. Country of origin: Taiwan

## How to Select the Right Size Coordinator

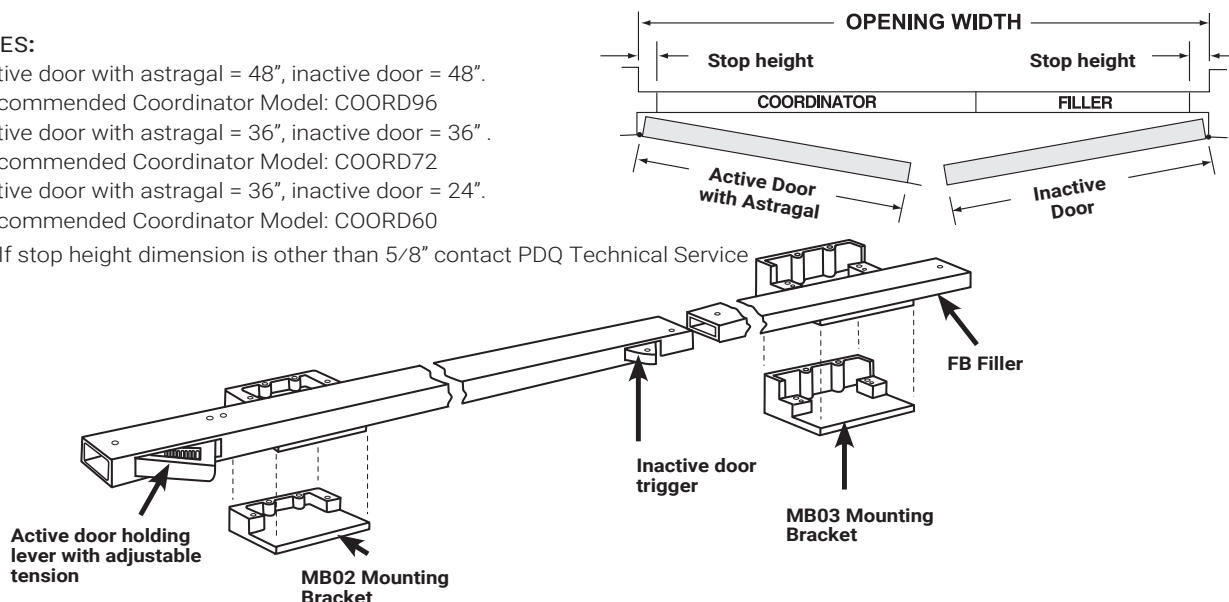
DOOR OPENING WIDTH	MODEL NUMBER	COORDINATOR PART NUMBER	COORDINATOR LENGTH	FILLER PART NUMBER	FILLER LENGTH
48"-54"	COORD54	COR42	42"	FB18	18"
55"-60"	COORD60	COR52	52"	FB18	18"
61"-72"	COORD72	COR52	52"	FB20	20"
73"-96"	COORD96	COR60	60"	FB36	36"

Coordinator size and length is a function of the active door size. It is recommended the coordinator extend a min of 6" beyond the active door width.

### EXAMPLES:

- 1 – Active door with astragal = 48", inactive door = 48".  
Recommended Coordinator Model: COORD96
- 2 – Active door with astragal = 36", inactive door = 36".  
Recommended Coordinator Model: COORD72
- 3 – Active door with astragal = 36", inactive door = 24".  
Recommended Coordinator Model: COORD60

NOTE: If stop height dimension is other than 5/8" contact PDQ Technical Service



## How To Order

DOOR OPENING WIDTH	MOUNTING BRACKET OPTION	FINISH
<b>COORD72</b> <b>COORD 54</b> — For Door Widths From 48" - 54" <b>COORD 60</b> — For Door Widths From 55" - 60" <b>COORD 72</b> — For Door Widths From 61" - 72" <b>COORD 96</b> — For Door Widths From 73 - 96"	<b>MB02</b> <b>MB02</b> — Mounting Bracket - Soffit over 2-1/4" <b>MB03</b> — Mounting Bracket - Soffit 7/8" - 2-1/4"	<b>600</b> <b>600</b> — USP Primer

Ordering Example Door Opening Width: 72", Soffit width: 7/8": COORD 72 MB03 600

## FB Series Filler

### SPECIFICATIONS:

**BASE MATERIAL:** • Steel

**FINISHES:** • 2 Ea. 12-24 x 1-1/4" PH PH MS

**DESIGNATOR** • FB18 — 18"

**SIZE:** • FB20 — 20"

• FB42 — 42"

For lengths greater than 42" contact PDQ Technical Service.



## Mb Series Mounting Bracket

### FEATURES:

- Required for soffit installations
- Prevents damage to the Coordinator by installation fasteners

### SPECIFICATIONS:

**BASE MATERIAL:** • Aluminum

**FASTENERS:** • MB02: 4 Ea. 10-24 x 1-1/2" FH PH MS.

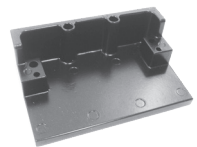
• MB03: 4 Ea. 10-24 x 2" FH PH MS, 2 Ea. 8-32 x 1-1/2" FH PH MS

**FINISHES:** • 600 (USP) Primer

NO.	SOFFIT SIZE
MB02	OVER 2-1/4"
MB03	7/8" - 2-1/4"



**MB02**



**MB03**

## 93590/93591 Series Door Gravity Coordinator, ANSI Type 21B

### FEATURES:

- When active door is open, coordinator prevents the active door from closing until inactive door closes first. Closing the inactive door causes strike plate on top of door to contact cam and lift arm, allowing the active door to close. As inactive door continues closing, the roller travels over strike plate on, holding the arm above active door
- Non-handed. Field reversible
- Prevents the active door from closing until the inactive door is closed.
- 93590 Series: 6-1/2" Projection. For use on a pair of doors.
  - With astragal on the active door up to 4'.
  - With astragal, inactive door up to 3' 4".
  - With astragals, both doors up to 2' 10".
- 93591 Series: 8-1/2" Projection. For use on a pair of doors
  - With astragal on the active door over 4'.
  - With astragal, inactive door over 3' 4"
  - With astragals, both doors up to 2' 10"



### SPECIFICATIONS:

**BASE MATERIAL:** • Cast brass

**FASTENERS:** • Body: 2 ea. #10 x 1" FH SMS, 2 ea. #10 - 24 x 1" FH MS. Strike: 5 ea. #8 x 1" FH SMS.

**FINISHES:** • 626 (US26D) Satin Chrome

**CERTIFICATIONS, LISTINGS,** • UL/CUL 10B and UL/CUL10C listed for 3 hours for use with a pair of swing doors incorporating astragal

**COMPLIANCES:** • Complies with ANSI/BHMA156.3 Type 21B

MODEL	FINISH	PROJECTION
53590	626 - SATIN CHROME	6-1/2"
53591	626 - SATIN CHROME	8-1/2"

Ordering example: 53590 626

## 910 Series Carry Bar

### FEATURES:

- Required for soffit installations used when the inactive door is opened before the active door

### SPECIFICATIONS:

**BASE MATERIAL:** • Brass, steel

**FASTENERS:** • 2 ea. 1/4 - 20 x 3/4" RH MS, 2 ea. 1/4 - 20 x 1-11/16" sex bolts (Included).

**FINISHES:** • 689 Aluminum Painted, 693 Black Painted



MODEL	FINISH	BASE SIZE
910	689 - ALUMINUM	1-3/4" X 2-1/4"
910	693 - BLACK	1-3/4" X 2-1/4"

Ordering example: 910 689

## Cross Reference

PDQ	DESCRIPTION	ABH	DCI	HAGER	IVES	ROCKWOOD	TRIMCO
COR42	Coordinator	3710	N6	297D	COR32	2660	3094A2
COR52	Coordinator	3720	6	297D	COR42/52	2672	3094B1
COR60	Coordinator	3730	L-6	297D	COR60/72	2696	3094C4
MB03	Mounting Bracket	3751	601AB	297M	MB-2	1601AB	3095
MB02	Mounting Bracket	3752	601C	297N	MB-1	1601C	3096
910	Carry Bar	3760	100	297C	CB1	1100	3090
93590/91	Gravity Coordinator	3790	500	298D	COR7G/9G	576	3093

# Finishes (Product Specific)

## Architectural



605 (US3)  
Bright Brass, Clear  
Coated



613 (US10B)  
Oil Rubbed Bronze,  
Oxidized Satin Bronze,  
Oil Rubbed, No Coat-  
ing

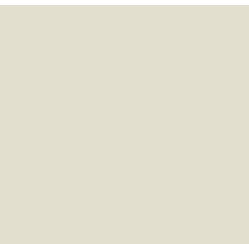


626 (US26D)  
Satin Chromium  
Plated, No Coating



630 (US32D)  
Satin Stainless Steel,  
No Coating

## Painted



600 (USP)  
Primed for Painting



689 (US28)  
Aluminum



693 Black

Finishes shown are representative only. Not all products are available in all finishes listed.



## SECURING CONFIDENCE OPENING POSSIBILITIES

**Phone:** 717.656.4281

**Tech Support:** 800.441.9692

**Email:** [help@pdqlocks.com](mailto:help@pdqlocks.com)

**Headquarters:** 2230 Embassy Drive, Lancaster, PA  
17603 P.O Box 6426, Lancaster, PA 17607

**Regional Distribution Centers:** Lancaster, PA |  
Norcross, GA | Auburn, WA

**Middle East Manufacturing:** Dammam, Kingdom of  
Saudi Arabia