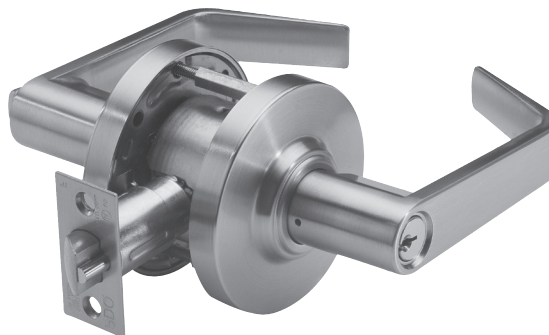


### Typical Applications

- Assisted Living
- Hospitality
- Houses of Worship
- Industrial
- Medium/Light Commercial Installations
- Multi-family
- Offices
- Retail



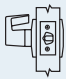
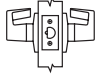
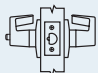
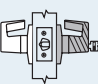
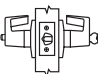
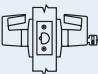
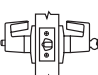

### Specifications

<b>FOR DOORS:</b>	• 1-3/8" to 1-3/4" thick • Preset for 1-3/4" door
<b>APPLICATION:</b>	• Through door thru-bolting • Fits standard 160 and 161 Door prep • Thru-Bolts are removable
<b>BACKSET:</b>	• 2-3/4" standard • 2-3/8," 3-3/4," 5" optional
<b>CHASSIS:</b>	• Heavy-gauge cold rolled steel mechanism • Dichromated for corrosion resistance
<b>FRONT:</b>	• 2-1/4" x 1-1/8" or 2-1/4" x 1" • Beveled 1/8" on 2" • Stainless Steel or Wrought Brass
<b>STRIKE:</b>	• ASA standard • T-Strike or Full Lip Strike optional • Stainless Steel or Wrought Brass
<b>LEVERS:</b>	• Philadelphia, Boston, Miami, Memphis, Orlando
<b>ROSE:</b>	• 3-3/8" DIA Wrought
<b>LATCHBOLT:</b>	• 1/2" Throw
<b>HAND:</b>	• Non-handed (Except Memphis)
<b>TRIM:</b>	• Solid diecast PHL, BSN, MIA, MEM and ORL Levers • Wrought Brass Roses • Concealed Screws
<b>KEYS:</b>	• Two (2) per Lock
<b>KEYWAYS:</b>	• SCC standard (Schlage C Compatible) • Also available in keyways of other manufacturers
<b>INTERCHANGEABLE CORE:</b>	• 6 or 7-pin • Compatible with Best, Falcon & Arrow. Not available with Memphis lever.
<b>CYLINDER:</b>	• 6-pin Brass Insert Cylinder keyed to 5-pins • Standard High Security and UL437 Cylinders Available
<b>KEYING:</b>	• Options: MK, CMK or GMK / Zero Bitted (KO), Keyed Different (KD) or Keyed Alike (KA) • Can be keyed into existing master key systems
<b>FINISHES:</b>	• 605 (US3), 613 (US10B), 622 (19D), 626 (US26D)
<b>CERTIFICATIONS, LISTINGS, COMPLIANCES:</b>	• UL listed for 3 hrs, for single doors up to 4'0" x 8'0" • Certified to ANSI/BHMA A156.2 Grade 2 • Complies with ADA (Americans with Disabilities Act) and ICC/ANSI 117.1 for Accessible and Usable Buildings • TAA compliant. Country of origin: KR
<b>WARRANTY:</b>	• Five (5) year Limited Warranty

‡ Available with antimicrobial coating, technology that is known to inhibit the growth of microbes.

# SD Series

## PDQ Functions

FUNCTION	FUNCTION NUMBER	OUTSIDE   INSIDE	DESCRIPTION	ANSI NUMBER
<b>NON KEYED</b>				
Communicating	SD125		<ul style="list-style-type: none"> <li>Latchbolt operated by inside lever</li> <li>Blank plate outside</li> <li>Minimum clearance of 1-1/2" between doors</li> <li>Deadlocking (guarded) latchbolt</li> </ul>	—
Passage	SD126		<ul style="list-style-type: none"> <li>Latchbolt operated by lever from either side at all times</li> </ul>	F75
Privacy Bedroom Bathroom	SD176		<ul style="list-style-type: none"> <li>Latchbolt operated by lever from either side or emergency release in outside lever</li> <li>Outside lever locked by push button on inside</li> <li>Outside lever unlocked by emergency release from outside, rotating inside lever, or closing door</li> </ul>	F76
<b>KEYED</b>				
Storeroom	SD115		<ul style="list-style-type: none"> <li>Latchbolt operated from outside by key, inside by lever</li> <li>Outside lever always fixed</li> <li>Inside lever always free</li> <li>Deadlocking (guarded) latchbolt</li> </ul>	F86
Entrance	SD116		<ul style="list-style-type: none"> <li>Latchbolt operated by lever from either side or key in outside lever</li> <li>Outside lever locked by push/turn button on inside</li> <li>When outside lever is locked by push button on inside – key from outside, or rotating inside lever unlocks outside lever</li> <li>When outside lever is locked by pushing and turning the button on the inside, key from outside or rotating inside lever retracts latch but does not unlock outside lever</li> <li>Deadlocking (guarded) latchbolt</li> </ul>	F109
Classroom	SD148		<ul style="list-style-type: none"> <li>Latchbolt operated by lever from either side</li> <li>Outside lever locked or unlocked by key from outside</li> <li>Inside lever always operates latch</li> <li>Deadlocking (guarded) latchbolt</li> </ul>	F84
Entry	SD182		<ul style="list-style-type: none"> <li>Latchbolt operated by lever from either side or key in outside lever</li> <li>Outside lever locked by push button on inside</li> <li>Outside lever unlocked by key from outside, and rotating inside lever</li> </ul>	F82
<b>DUMMY</b>				
Single Dummy	SD211		<ul style="list-style-type: none"> <li>Pull lever one side</li> <li>No mechanical operation</li> </ul>	—



INDICATES RIGID LEVER

# SD Series

## Levers



Philadelphia



Boston



Miami



Memphis  
(Specify Handing)



Orlando

## Finishes



605 (US3)  
Bright Brass



613 (US10B)  
Oil Rubbed Bronze



619 (US15)  
Satin Nickel



622 (US19)  
Flat Black



626 (US26D)  
Satin Chromium

## Options

CODE	DESCRIPTION
SF	Split Finishes
DB	Dust Box

## Accessories

DESCRIPTION
Electric Strike for SD Locks (U.L. Listed)