



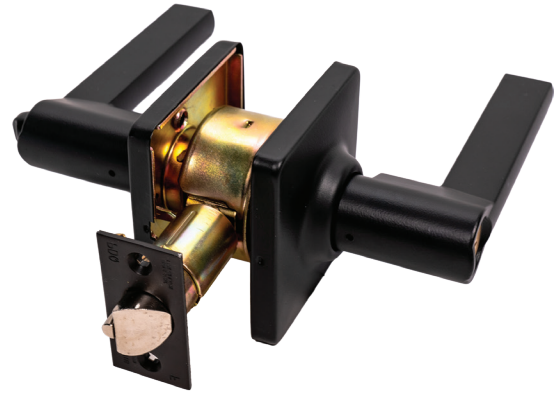
SF Series

Standard Duty Cylindrical Lock Grade 2

SF Series Grade 2 Cylindrical Lock

Reliable Security for Multi-Family, Multi-Tenant and Light Commercial Applications.

- 5 functions - Privacy, Passage, Entrance, Storeroom plus Single Dummy
 - Heavier duty cylindrical lock is more durable than a tubular lock
 - 5 designer levers to choose from
 - 7 architectural finishes
 - Stylish 2-9/16" round rose and 2-15/16" square rose
 - Retrofits all major manufacturer's door preps
 - Adjustable 2-3/8" – 2-3/4" backset latch is standard.
 - Optional fixed backset latch adds fire label and BHMA certification.
 - Conventional and SFIC core cylinders.
 - Anti-lockout kick-off feature (Privacy)
 - Suitable for doors 1-3/8" – 1-3/4" thick
 - Shares common levers with SD Cylindrical and CL Interconnected locks.
- Mix and match for a uniform look.



Square Rose Trim
622 Flat Black Finish

Applications



MULTI-FAMILY
HOUSING



SENIOR
LIVING



STUDENT
HOUSING



LIGHT
COMMERCIAL



Specifications

FOR DOORS:	• 1-3/8" to 1-3/4" thick • Preset for 1-3/4" door
APPLICATION:	• Fits standard 160 and 161 door prep • No additional thru-bolt
BACKSET:	• Adjustable - 2-3/8" - 2-3/4" (Optional UL Listed fire latch has fixed backsets, 2-3/8" or 2-3/4")
CHASSIS:	• Heavy-gauge cold rolled steel mechanism • Dichromated for corrosion resistance
FRONT:	• 1" face width, 1/4" radius with square corner filler for 1-1/8" width.
STRIKE:	• Full Lip Strike standard, ASA and T-Strike optional
LEVERS:	• Philadelphia, Boston, Miami, Memphis and Orlando
ROSE:	• 2-9/16" Diameter Round Rose, 2-15/16" Square Rose
LATCHBOLT:	• Adjustable - 2-3/8" - 2-3/4" latch standard, Optional UL fire-rated 2-3/4" or 2-3/8" fixed latchbolts are available.
HAND:	• Non-handed, for Memphis, swap levers to rehand.
TRIM:	• Solid diecast PHL, BSN, MIA, MEM and ORL levers • Wrought brass roses • Concealed screws
KEYS:	• Two (2) per Lock
KEYWAYS:	• SCC standard (Schlage C Compatible) • Also available in keyways of other manufacturers
INTERCHANGEABLE CORE:	• 6 or 7-pin • Compatible with Best, Falcon & Arrow. Not available with Memphis lever.
CYLINDER:	• 6-pin Brass Insert Cylinder keyed to 5-pins • Standard High Security and UL437 Cylinders Available
KEYING:	• Options: MK, CMK or GMK / Zero Bitted (KO), Keyed Different (KD) or Keyed Alike (KA) • Can be keyed into existing master key systems
FINISHES:	• 605 (Bright Brass), 606 (US4) Satin Brass, 613 (Oil Rubbed Bronze), 619 (Satin Nickel), 622 (Flat Black), 625 (Bright Chromium), 626 (Satin Chrome)
COMPLIANCES:	• Complies with ADA (Americans with Disabilities Act) and ICC/ANSI 117.1 for Accessible and Usable Buildings
CERTIFICATIONS, LISTINGS:	• Entry function and optional fixed backset latch only. – Certified to ANSI/BHMA 156.2, Grade 2 (fixed backset latch only). – UL listed for single doors up to 4'0" x 8'0" when ordered with UL latchbolt, contact factory for details.
WARRANTY:	• Three (3) year Limited Warranty

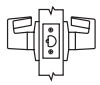
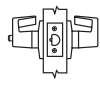
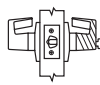
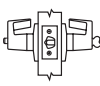

How to Order - Non-Keyed Functions

SERIES	FUNCTION	LEVER	ROSE	FINISH	LATCH	STRIKE	OPTION
SF	126	PHL	—	626	ADJ	FL	—
*ADJ latch is standard. ***Optional fixed backset latch adds fire label and BHMA Certification.	126 — Passage 176 — Privacy 211 — Single Dummy	BSN MIA MEM* ORL PHL	BLANK — Round Rose (default) All Levers SR — Square Rose (All Levers)	605 606 613E 619 622 625 626	ADJ* — Non-Fire Rated 1" face width, 1/4" radius corner with 1-1/8" square corner filler. 234*** — Fire Rated Fixed 2-3/4" backset fire rated latch, Square Corner 1-1/8" face 238*** — Fire Rated Fixed 2-3/8" backset fire rated latch, Square Corner 1" face 238R*** — Fire Rated Fixed 2-3/8" backset fire rated latch, Radius Corner 1" face	FL — Full Lip (default) ASA — ANSI/ASA T — "T" Strike	SF — Split Finishes

How to Order - Keyed Functions

SERIES	FUNCTION	LEVER	ROSE	FINISH	LATCH	STRIKE	CYLINDER	KEYWAY	KEYING	OPTION
SF	116	PHL	—	626	234	FL	D	SCC	KD	—
Keyed functions are fixed backset, fire rated, BHMA Certified.	115 — Storeroom	BSN	BLANK — Round	605	234 — Fire Rated Fixed 2-3/4" backset fire rated latch, Square Corner 1-1/8" face	FL — Full Lip (default)	D — Default			SF — Split Finishes
	116 — Entrance	MIA MEM ORL PHL	Rose (default) All Levers SR — Square Rose (All Levers)	606 613E 619 622 625 626 **Round Rose Only	238*** — Fire Rated Fixed 2-3/8" backset fire rated latch, Square Corner 1" face 238R*** — Fire Rated Fixed 2-3/8" backset fire rated latch, Radius Corner 1" face	ASA — ANSI/ASA T — "T" Strike	L — Less Cylinder SF6 — SFIC prepped w/ 6 pin core SF7 — SFIC prepped w/ 7 pin core SFL — SFIC prepped but less core			

PDQ Functions

FUNCTION	FUNCTION NUMBER	INSIDE OUTSIDE	DESCRIPTION	ANSI NUMBER
NON KEYED				
Passage	SF126		<ul style="list-style-type: none"> Latchbolt operated by lever from either side at all times 	F75
Privacy Bedroom Bathroom	SF176		<ul style="list-style-type: none"> Latchbolt operated by lever from either side or emergency release in outside lever Outside lever locked by push button on inside Outside lever unlocked by emergency release from outside, rotating inside lever, or closing door 	F76
KEYED				
Storeroom	SF115		<ul style="list-style-type: none"> Latchbolt operated from outside by key, inside by lever Outside lever always fixed Inside lever always free Deadlocking (guarded) latchbolt 	F86
Entrance	SF116	 Fixed backset, fire rated, BHMA latch included.	<ul style="list-style-type: none"> Latchbolt operated by lever from either side or key in outside lever Outside lever locked by push/turn button on inside When outside lever is locked by push button on inside – key from outside, or rotating inside lever unlocks outside lever When outside lever is locked by pushing and turning the button on the inside, key from outside or rotating inside lever retracts latch but does not unlock outside lever Deadlocking (guarded) latchbolt 	F109
DUMMY				
Single Dummy	SF211		<ul style="list-style-type: none"> Pull lever one side No mechanical operation 	—



INDICATES RIGID LEVER

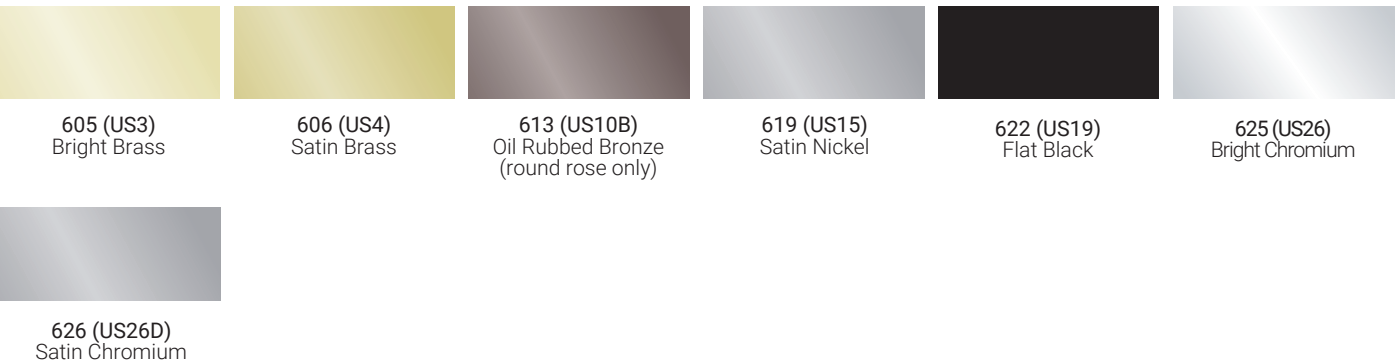
Levers/Round Rose Trim



Levers/Square Rose Trim



Finishes



Non-Fire Rated Adjustable Latch
(Standard on Non-Keyed Functions)

CODE	DESCRIPTION
ADJ	Adjustable non-fire rated latch, 1" face width with 1/4" radius corner with 1-1/8" square corner filler



Non-Fire Rated
Adjustable Latch

UL Fire Rated Fixed Backset Option for Non-Keyed Functions*

CODE	DESCRIPTION
234	Fixed 2-3/4" backset fire rated latch, Square Corner 1-1/8" face
238	Fixed 2-3/8" backset fire rated latch, Square Corner 1" face
238R	Fixed 2-3/8" backset fire rated latch, Radius Corner 1" face



Fire Rated
Fixed Latch

*Standard on Keyed Functions.



SECURING CONFIDENCE OPENING POSSIBILITIES

Phone: 717.656.4281

Tech Support: 800.441.9692

Email: help@pdqlocks.com

Headquarters: 2230 Embassy Drive, Lancaster, PA 17603
P.O. Box 6426, Lancaster, PA 17607

Regional Distribution Centers: Lancaster, PA | Norcross,
GA | Auburn, WA

Middle East Manufacturing: Dammam, Kingdom of
Saudi Arabia