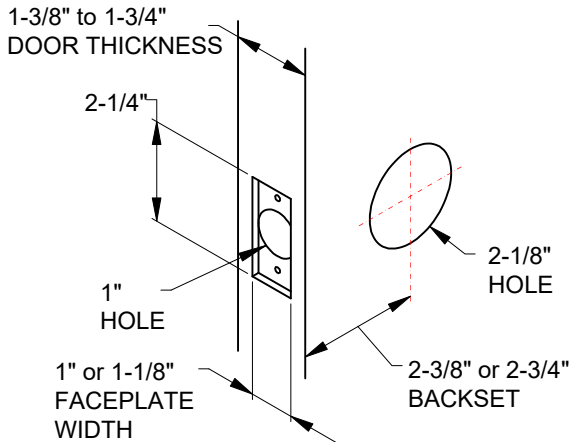


# SF INSTALLATION INSTRUCTION

## GR2 CYLINDRICAL LOCK



Phone: 833-2-PDQTEC | [www.pdqlocks.com](http://www.pdqlocks.com)

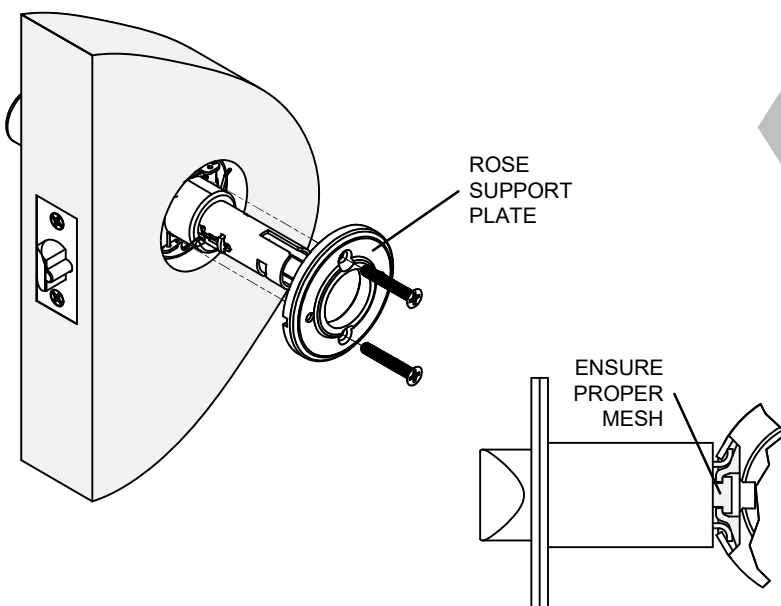
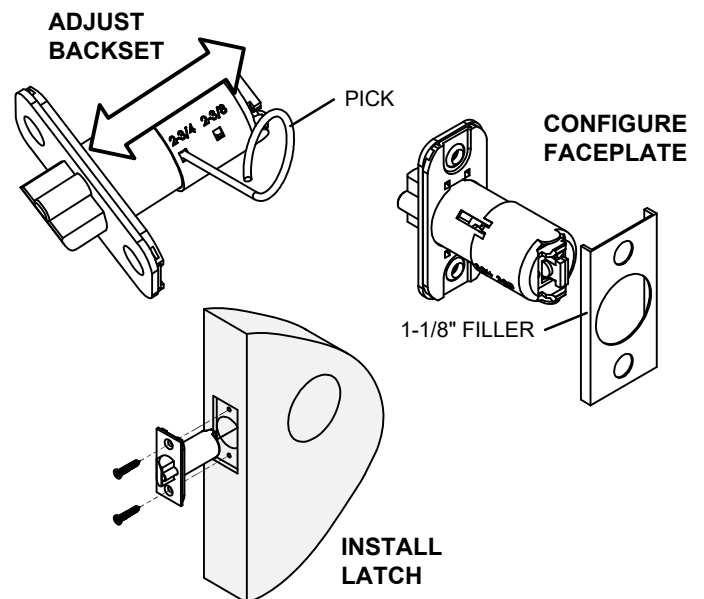


### 1. PREPARE DOOR

- Full machining templates can be found on website: [www.pdqlocks.com](http://www.pdqlocks.com)
- Minimum stile width = backset + 1-1/2"

### 2. PREPARE AND INSTALL LATCH

- Adjust latch to desired backset using included pick. Options are 2-3/8" or 2-3/4".
- Latch faceplate is 1". For doors with 1-1/8" prep, use included filler on back of latch.
- Install latch into front of door with bevel pointing toward door frame
- Secure using two combo screws



### 3. INSTALL LOCK

- Lock is preset from the factory for 1-3/4" thick door. To adjust, spin threaded rose until chassis is centered in door.
- Install lock chassis into thru hole in door making sure to properly engage ears of latch into lock chassis.
- Install rose support plate and secure with (2) screws.

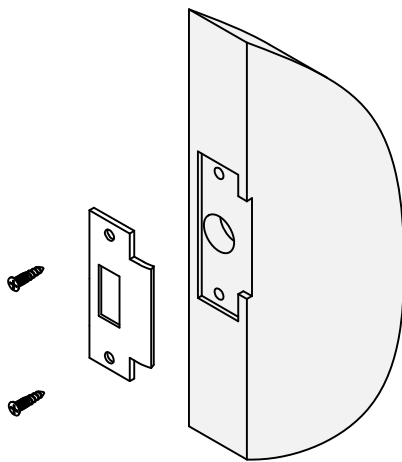
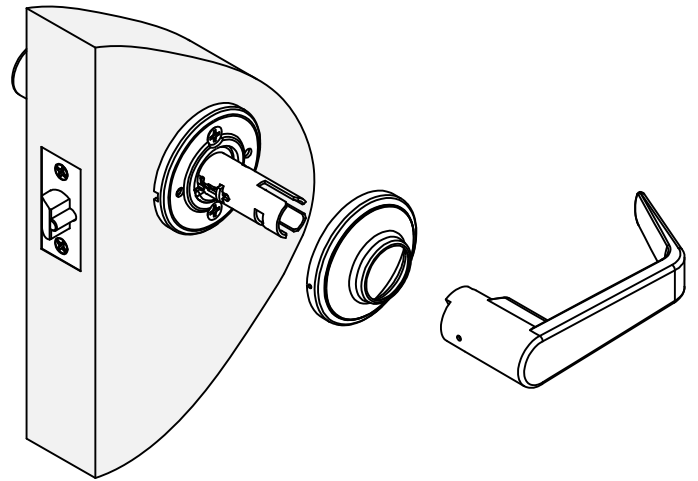
# SF INSTALLATION INSTRUCTION

## GR2 CYLINDRICAL LOCK



### 4. INSTALL ROSE AND LEVER

- Install rose – ensure indents on side of rose align with slots in rose support.
- Install lever by pushing on to spindle until clip engages with lever.
- Verify proper operation of lock.



### 4. INSTALL STRIKE

Install strike onto frame using provided combo screws.

### RE-HANDING INSTRUCTION

For Memphis Lever Only – 126/176 Functions

Locks with handed levers are shipped RH

- Swap inside and outside levers.
- Use included pick to depress lever clip through hole in front of lever to remove.

