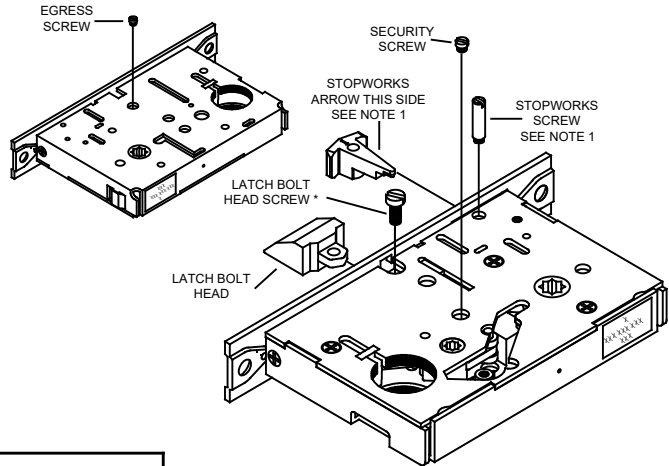


HANDING GUIDE FOR PDQ's MR 136, 154, 157, 158, 159, 162 AND 179 FUNCTIONS

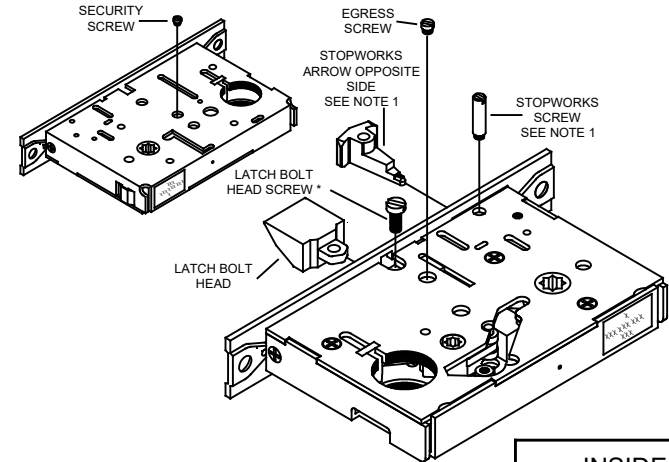
DO NOT OPEN THE LOCK BODY. ALL HANDING CHANGES ARE MADE BY POSITIONING THE SUPPLIED SCREWS AND PARTS WHICH ARE ACCESSED THROUGH THE EXTERIOR OF THE LOCK BODY.
 NO ADDITIONAL PARTS ARE REQUIRED TO CHANGE THE HAND OF THIS LOCK BODY.
IF YOU ARE REVERSING THE SWING (LH TO LHR FOR EXAMPLE) ALL YOU NEED TO DO IS REVERSE THE LATCH BOLT HEAD.



INSIDE

LEFT HAND (LH)

OUTSIDE

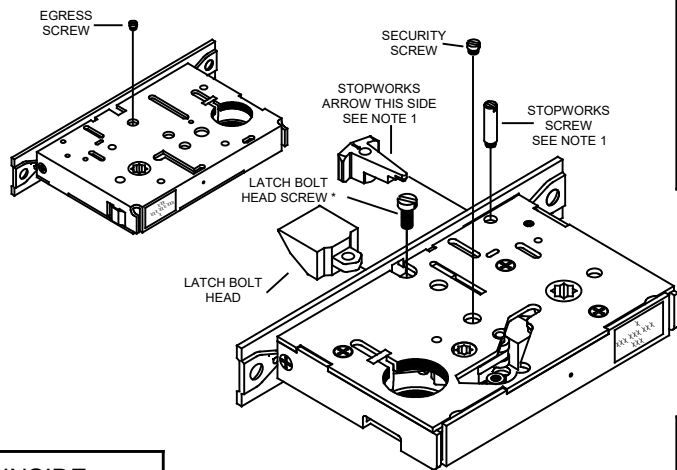
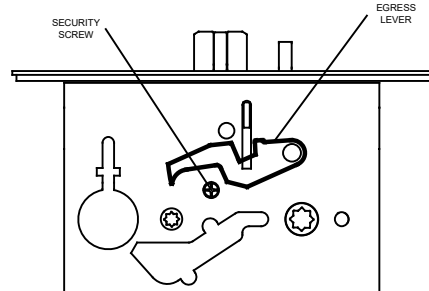


INSIDE

RIGHT HAND (RH)

OUTSIDE

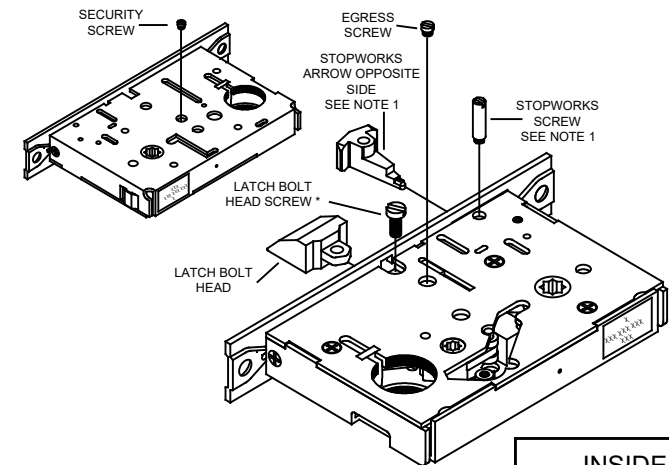
BEFORE INSTALLING EGRESS OR SECURITY SCREW, EXTEND AND RETRACT DEADBOLT TO POSITION EGRESS LEVER AS SHOWN BELOW. ENSURE THAT EGRESS LEVER IS IN CORRECT POSITION.



INSIDE

LEFT HAND REVERSE (LHR)

OUTSIDE



INSIDE

RIGHT HAND REVERSE (RHR)

OUTSIDE

NOTES:

- 1 - STOPWORKS AND STOPWORKS SCREW ONLY APPLY TO 154, 158 AND 162 FUNCTIONS
- * - APPLY PERMATHEX'S LOCTITE 242 (BLUE), OR EQUIVALENT, TO THE LATCH BOLT HEAD SCREW.